

SOUTH PADRE – ESTATE SERIES

inches (mm)

66 3/8 x 36 x 23 (1690 x 915 x 585) • Fax on Demand #1274

MODEL #A16636R



FEATURES

- 7 hydrotherapy jets: pressure-flo (4), StressEaz neck and shoulder therapy (1), recessed rotary (2)
- 1.75hp pump
- Electronic on/off control
- Deep bathing well
- Acrylic grab bars
- Slip-resistant floor
- Pre-leveled ABS support base
- Quiet pad anti-vibration pump mount
- Universal drain
- Lucite cast acrylic surface
- Limited lifetime warranty

OPTIONS

- Chromatherapy LED lighting
- 1.5kW inline maintenance heater
- Comfort pillow: Biscuit, Black, White
- Grab bar(s): Chrome, Oil Rubbed Bronze, Polished Brass, Brushed Nickel, Color matched (Biscuit, White, Clear)
- Cable drive waste & overflow: Chrome, Oil Rubbed Bronze, Polished Brass, Brushed Nickel, Color Matched (Biscuit, Bone, White)
- Optional pump location
- Factory installed rigid ABS tile flange

AQUATIC ADVANTAGE

- National distribution
- 6 manufacturing facilities
- Private fleet
- Centralized customer service
- Field support
- 24-hour fax-on-demand

COLOR & TRIM OPTIONS

| Stock | Premium |
|------------------------|------------------|
| Almond (C, M) | Black (C, M) |
| Bone (C, M) | Cashmere (M) |
| Linen/Biscuit (C, M) | Mexican Sand (M) |
| Sterling Silver (C, M) | Red (M) |
| White (C, M) | Sandbar (M) |

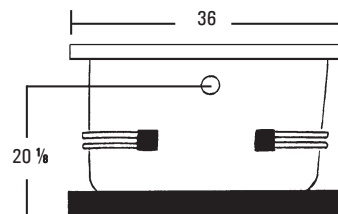
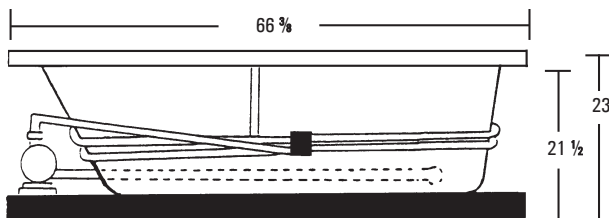
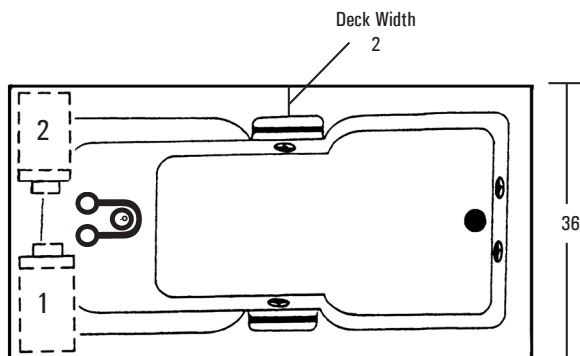
C = Color Matched Trim

M = Metallic Trim (Brushed Nickel, Chrome, Polished Brass)



SOUTH PADRE

66 3/8 x 36 x 23 (1690 x 915 x 585)
inches (mm)



FEATURES lbs (kg) Dimensional Tolerance ± 3/8". Dimensions needed for site preparation should be measured from the unit. Aquatic assumes no responsibility for preparatory work.

| Type and Model # | Material | Jets | Pump | Heater | Controls | Drain | Pkg. Wt. |
|--------------------|----------|------|---------|--------------------------|-------------------|-----------|----------|
| Whirlpool #A16636R | Acrylic | 7 | 1.75 HP | 1.5 kw Inline (optional) | Electronic on/off | Universal | 203 (92) |

DIMENSIONS inches (mm)

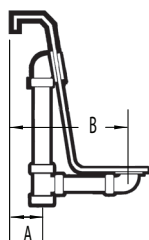
| Width Overall / Net | Depth Overall / Net | Height Overall / Net | Skirt Height |
|------------------------|------------------------|-------------------------|-----------------|
| 66 3/8 (1690) | 36 (915) | 23 (585) | - |

SUMP DATA inches (mm)

| Capacity to Overflow gal (ltr) | Min. Operating Capacity gal (ltr) | WIDTH @ centerline | | DEPTH @ centerline | |
|--------------------------------------|---|--------------------|---------------|--------------------|--------------|
| | | Top | Bottom | Top | Bottom |
| 85 (2160) | 66 (250) | 59 3/4 (1515) | 43 3/4 (1110) | 23 (585) | 20 1/2 (520) |

PLUMBING DIMENSIONS inches (mm)

| A | B |
|------------|----------|
| 2 1/4 (60) | 12 (305) |



ELECTRICAL DATA

| Component | Specification | Requirement |
|-----------------|-------------------------|--|
| Pump | 1.75 HP; 12 AMP; 110 V | 15 AMP; 110V, separate circuit; Class A GFCI |
| Optional Heater | 1.5 kW; 12.5 AMP; 110 V | 15 AMP; 110V, separate circuit; Class A GFCI |

NOTES:

1) Where applicable, utilize cut-out templates packed with unit for deck cutouts.

2) 16 x 20 (405 x 510) minimum access required at pump/blower location(s).