

6042BWCWP – EVERYDAY BATHS

inches (mm)

60 x 34-42 x 24½ (1525 x 865-1065 x 620) • Fax on Demand #1243

SOAKER MODEL #6042BWC

WHIRLPOOL MODEL #6042BWCWP



FEATURES

- Alcove bath
- Integral tiling flange (3T)
- 6 ½" wainscot
- Integral bowed skirt
- Extra large bathing well
- Ergonomic backrest
- Slip-resistant textured bottom
- Center rear drain
- Gelcoat surface
- 5-year limited warranty

Whirlpool Features:

- .75hp motor
- 6 adjusta-flow whirlpool jets
- Color matched or clear trim
- Pneumatic on/off control
- Advanced safety suction system

OPTIONS

- In-line heater (whirlpool models)
- Mood light (whirlpool models)
- Designer drain, waste & overflow

AQUATIC ADVANTAGE

- National distribution
- 5 manufacturing facilities
- Private fleet
- Centralized customer service
- Field support
- 24-hour fax-on-demand

COLOR & TRIM OPTIONS

Stock	Premium
Almond (C)	Black (C)
Biscuit (C)	Mexican Sand* (NA)
Bone (C)	Sand Bar* (NA)
Linen (C)	
Sterling Silver (C)	
White (C)	

C = color matched trim

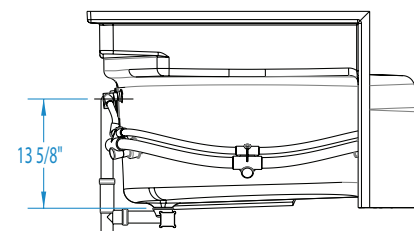
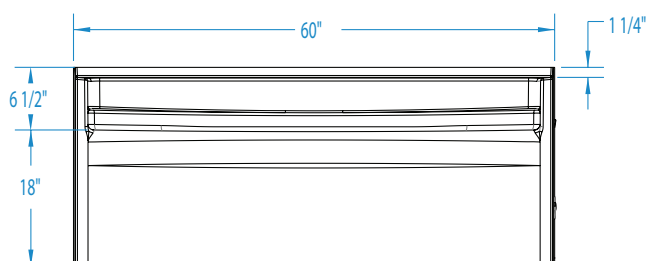
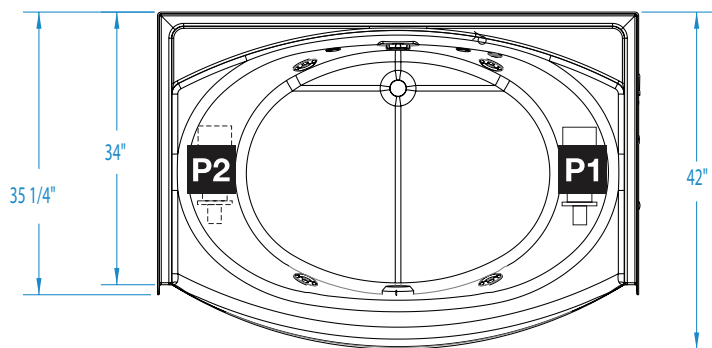
NA = not applicable

* color not available for whirlpool models



6042BWCWP

60 x 34-42 x 24½ (1525 x 865-1065 x 620)
inches (mm)



FEATURES lbs (kg) Dimensional Tolerance ± 3/16". Dimensions needed for site preparation should be measured from the unit. Aquatic assumes no responsibility for preparatory work.

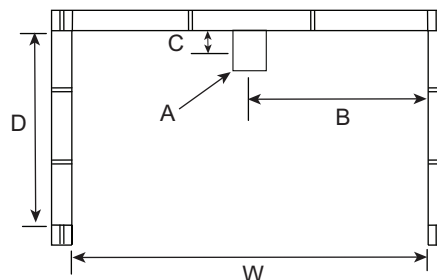
Model #	Material	Jets	Motor	Controls	Drain	Net Wt.	Pkg. Wt.
Soaker #6042BWC	Gelcoat	–	–	–	Center Rear	71 (32)	76 (34)
Whirlpool #6042BWCWP	Gelcoat	6	0.75 HP	Pneumatic	Center Rear	120 (54)	130 (59)

DIMENSIONS

Specifications	inches (mm)
Width: Overall / Net	60 (1525)
Depth: Overall / Net	35 ¼ (895) / 34–42 (865–1065)
Height: Overall / Net	25 ¾ (640) / 24 ½ (620)
Enclosure Opening	56 ½ (1435)
Skirt Height	18 (455)
Drain Rough-In (from Back Wall)	2 ½ (65)
Drain Rough-In (from Side Wall)	30 (760)
Drain: Diameter / Clearance	2 (50) / 1 ¼ (30)

FRAMING DIMENSIONS inches (mm)

Type	D Depth	W Width	H Height	A	B	C
Alcove	35 ¼ (895)	60 ⅞ (1525)	23 ⅝ (600)	Box Out	30 (760)	2 ½ (65)



SUMP DATA

Top of Drain to Bottom of Overflow	Capacity to Overflow gal (ltr)	Min. Operating Capacity gal (ltr)	WIDTH @ centerline		DEPTH @ centerline	
			Top	Bottom	Top	Bottom
12 ¾ (315)	53 ½ (200)	48 ½ (1230)	52 ½ (1335)	40 ⅝ (1030)	34 ½ (375)	30 ½ (775)