

Shower Trim Installation Instructions

Recommended for all SH-PB Series Shower Fittings

**CHICAGO
FAUCETS**

a Geberit company

Notice to the Installer

- Read this entire instruction sheet before installing to ensure proper installation.
- Installation must comply with local codes and ordinances.

Pressurized plumbing fixtures shall be installed in accordance with manufacturer's recommendations. The supply piping to these devices shall be securely anchored to the building structure to prevent installed device from unnecessary movement when operated by the user. Care shall be exercised when installing the device to prevent marring the exposed surface.

NOTE: The information in this manual is subject to change without notice.

Please leave this manual with the facility manager after completing the valve installation. This document contains information necessary for routine maintenance and servicing.

Installing the Shower Trim

1. After wall is finished, remove the plaster guard from the valve unit. Take the trim sleeve from the trim pack and slide it over the valve unit, seating it flush with the cartridge (see **Figure 1**).
2. Take the escutcheon plate from trim pack and position the gaskets on the back side of escutcheon (see **Figure 2**).
3. Take the escutcheon plate and slide it over the trim sleeve. Make sure that the escutcheon plate gasket is properly seated and flush against the wall. Rotate the escutcheon plate so that the "C" is positioned at the bottom of the escutcheon as shown in **Figure 3**.
4. Take handle and allen wrench from trim pack. Note location of set screw already started in the handle cap. It may be necessary to loosen the set screw slightly to make sure the handle slides on the cartridge stem completely (see **Figure 4**).
5. Slide handle onto the cartridge stem. Make sure that the hole in the handle cap is aligned with the "C" on the escutcheon plate so that the handle stem will be pointing directly down when assembled.
6. Maintain the handle cap hole facing down, aligned with the "C" on the escutcheon plate. Then insert allen wrench into handle cap hole and slowly tighten set screw until you have a full and secure engagement of the screw onto the cartridge stem (see **Figure 5**).
7. Rotate the handle in the counter-clockwise direction and it should stop near the position of the "H" on the escutcheon plate. Then rotate the handle in the clockwise direction and it should come to a stop at the "C" location on the escutcheon plate (see **Figure 6**).

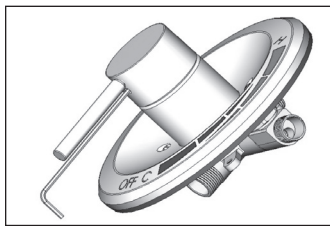


Figure 5

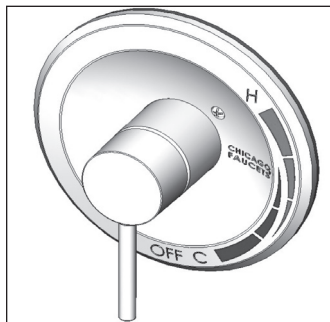


Figure 6

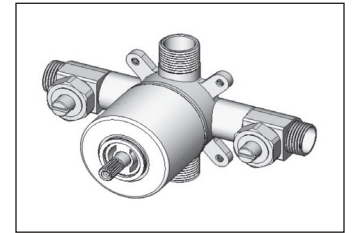


Figure 1

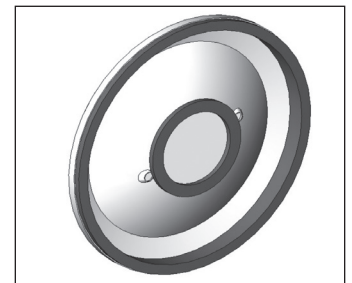


Figure 2

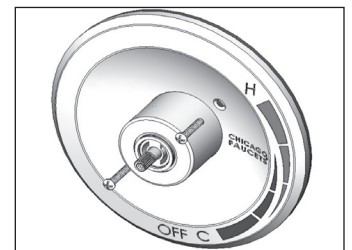


Figure 3

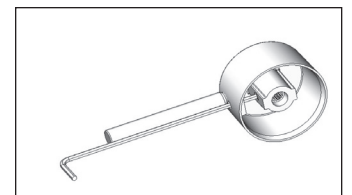


Figure 4

Care and Maintenance

All Chicago Faucets fittings are designed and engineered to meet or exceed industry performance standards. Care should be taken when cleaning this product. Do not use abrasive cleaners, chemicals or solvents as they can result in surface damage. Use mild soap with warm water for cleaning and protecting the surface of Chicago Faucets fittings.

For additional technical assistance, call 800/TEC-TRUE (800-832-8783) or visit our website at chicagofaucets.com.

CHICAGO FAUCETS LIMITED WARRANTY

TO WHOM DOES THIS WARRANTY APPLY? — The Company extends the following limited warranty to the original user only.

WHAT DOES THIS WARRANTY COVER AND HOW LONG DOES IT LAST? This warranty covers the following Commercial Products: SH-PB Shower Fittings.

LIFETIME FAUCET WARRANTY — The "Faucet," defined as any metal cast, forged, stamped or formed portion of the Product, not including electronic or moving parts or other products separately covered by this Limited Warranty or water restricting components or other components, is warranted against material manufacturing defects for the life of the Product.

FIVE YEAR FAUCET WARRANTY — Certain Products and portions of the Product are warranted against material manufacturing defects for a period of five (5) years from the date of Product purchase. Products warranted against material manufacturing defects for a period of five (5) years from the date of Product purchase are referred to by the product numbers 42X, 43X, 15XX and E-Tronic™ - 4X, 5X, 6X, 7X, 8X and 9X. All zinc die cast portions of Product are warranted against material manufacturing defects for a period of five (5) years from the date of Product purchase.

THREE YEAR ELECTRONICS WARRANTY — Electronic components, including the solenoid, are warranted for three (3) years from the date of installation.

FIVE YEAR CARTRIDGE WARRANTY — The "Cartridge", defined as the metal portion of any Product typically referred to by the product numbers containing 1-099, 1-100, 1-310, 377X, 217X and 274X, excluding any rubber or plastic components, is warranted against material manufacturing defects for a period of five (5) years from the date of Product purchase. All Cartridges included in the Company's Single Control or Shower Products also are warranted against material manufacturing defects for a period of five (5) years from the date of Product purchase.

ONE YEAR FINISH WARRANTY – COMMERCIAL — For Products used in commercial applications, the finish of the Product is warranted against material manufacturing defects for a period of one (1) year from the date of Product purchase.

OTHER WARRANTIES — All other Products not covered above are warranted against material manufacturing defects for a period of one (1) year from the date of Product purchase.

Other restrictions and limitations apply. For complete warranty details, call Chicago Faucets Customer Service at 847-803-5000 or visit chicagofaucets.com.

The Chicago Faucet Company
2100 South Clearwater Drive
Des Plaines, IL 60018
Phone: 847/803-5000
Fax: 847/803-5454
Technical: 800/832-8783
www.chicagofaucets.com