

**CHICAGO FAUCETS**  
a Geberit company

2100 South Clearwater Drive  
Des Plaines, IL 60018  
Phone: 847-803-5000  
Fax: 847-803-5454  
www.chicagofaucets.com

**REPAIR PARTS**

FITTING NO.

**613-AABCP**

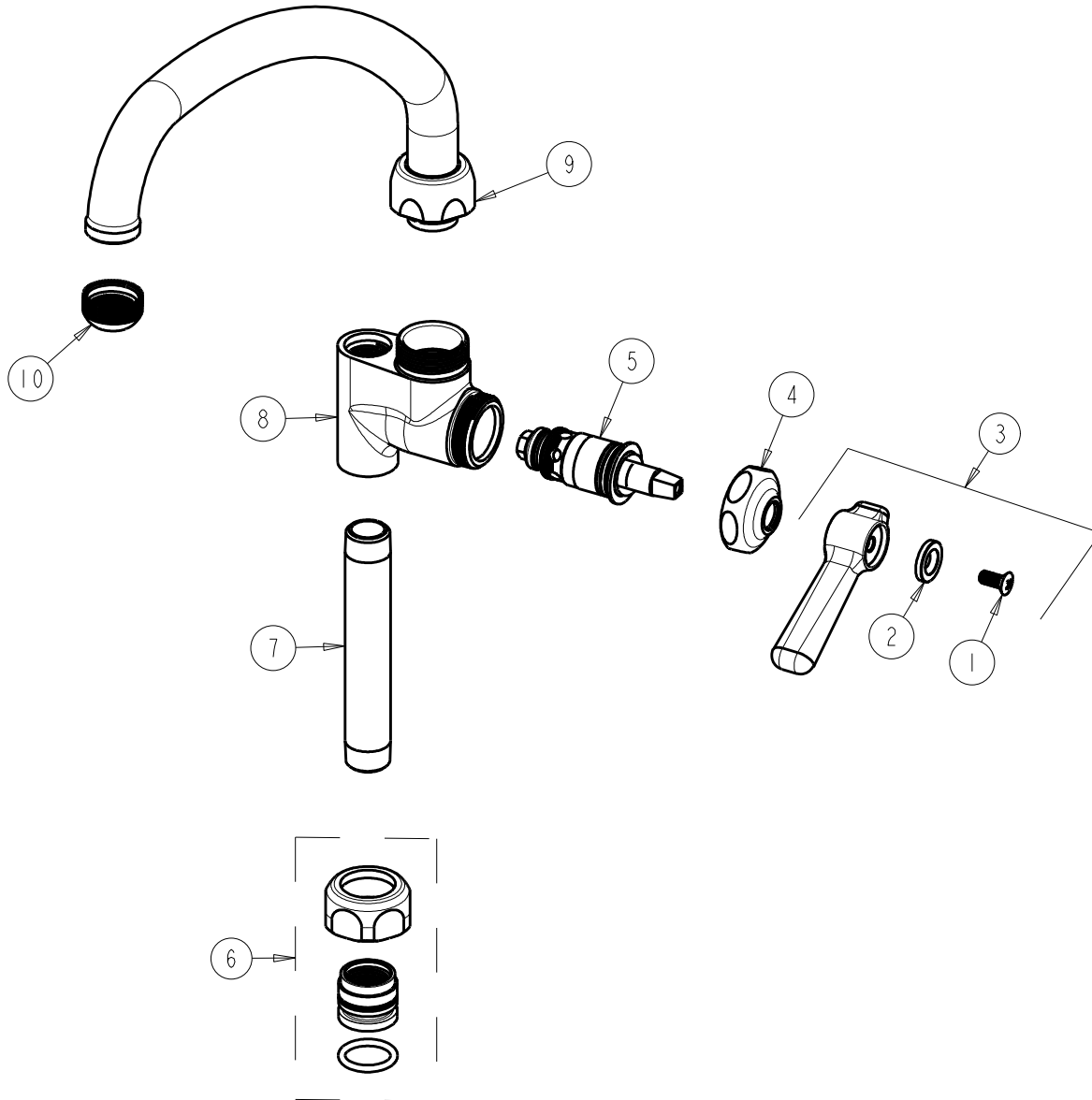
SUBMITTED MODEL NO.

ITEM NO.

**FOR TECHNICAL ASSISTANCE**  
**1-800-TEC-TRUE (1-800-832-8783)**

BY: JAR DATE: 10-24-11

CHK: *[Signature]* REV:



NOTE:  
PART 7 IS ADHESIVED TO ITEM 8 AT THE  
FACTORY BUT IS AVAILABLE AS A 'JK' PART.

ITEM	PART NO.	DESCRIPTION	ITEM	PART NO.	DESCRIPTION
1	420-010JKRCF	SCREW, 10-32 UNC PH 1/2	6	143-PPJKABNF	PRE-PACK
2	633-223JKNF	INDEX BUTTON (WHITE)	7	906-002JKCP	NIPPLE 3/8" NPT X 4"
3	369-PLJKCP	PLAIN LEVER HANDLE	8	---	VALVE BODY (NOT SOLD SEPARATELY)
4	1-214JKCP	CAP	9	L9LESSE3JKCP	SPOUT
5	1-099XTJKABNF	QUATURN CARTRIDGE (RH)	10	E1JKRCF	QUIXTOP OUTLET