

CHICAGO FAUCETS
a Geberit company

2100 South Clearwater Drive
Des Plaines, IL 60018
Phone: 847-803-5000
Fax: 847-803-5454
www.chicagofaucets.com

REPAIR PARTS

BY: JAR DATE: 12-28-07

CHK: *[Signature]* REV: 11-21-11

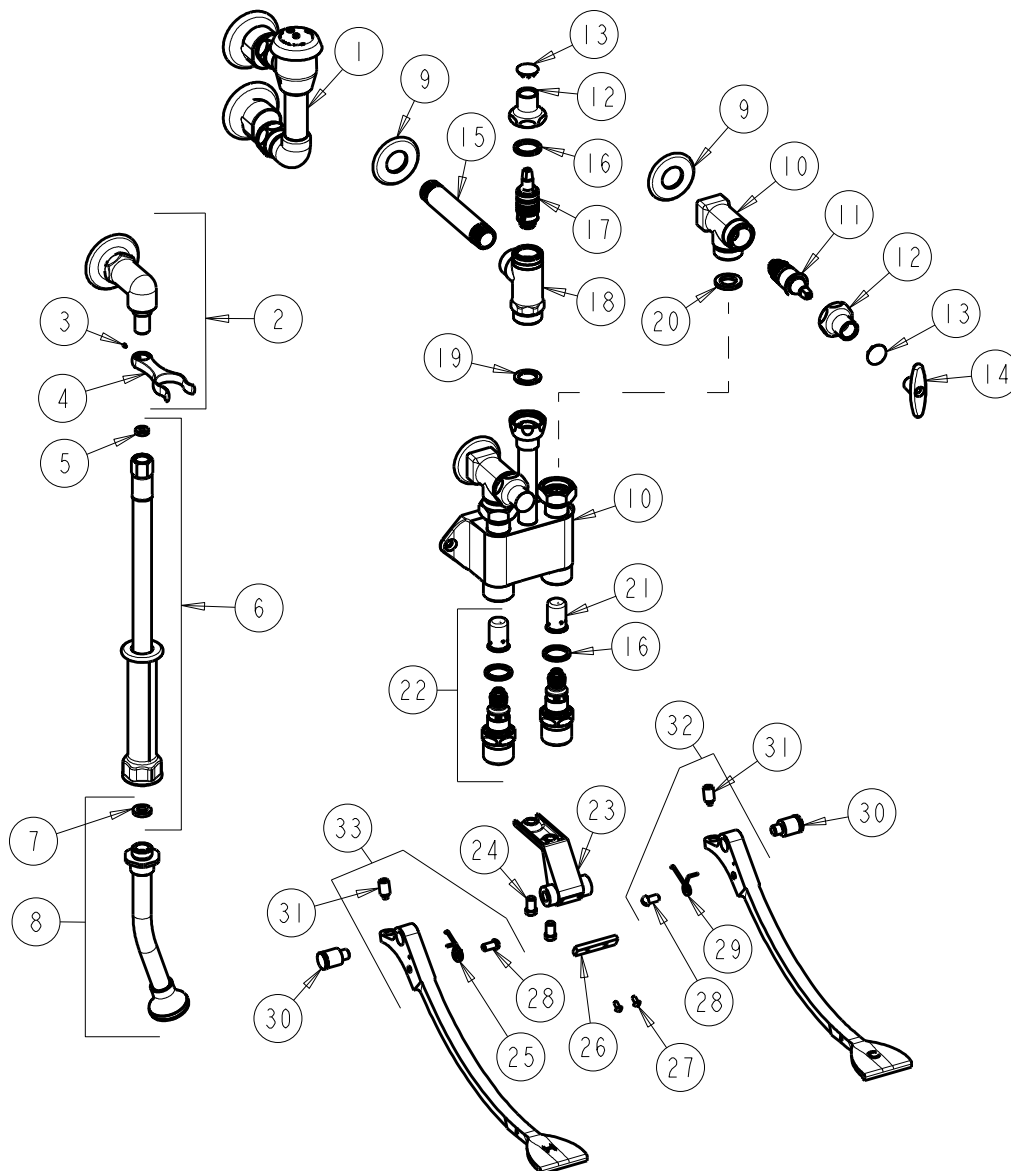
FITTING NO.

910-G777-19KCP

SUBMITTED MODEL NO.

ITEM NO.

FOR TECHNICAL ASSISTANCE
1-800-TEC-TRUE (1-800-832-8783)



ITEM	PART NO.	DESCRIPTION	ITEM	PART NO.	DESCRIPTION
1	892-GCP	ELEVATED VACUUM BREAKER ASSY.	18	-----	BODY (NOT SOLD SEPARATELY)
2	777-033JKKCP	ANGLE SHANK ASSEMBLY	19	698-002JKNF	GASKET, .98 X .69 X .06
3	777-013JKNF	SCREW, SET 6-32 X 1/8	20	1-011JKNF	WASHER, .97 X .62 X .12
4	-----	FORK (NOT SOLD SEPARATELY)	21	333-075JKNF	DASHPOT
5	739-051JKNF	GASKET, 1/2 X 1/4 X 1/8	22	625-XJKNF	FOR PARTS SEE 625-XJKABNF
6	739-053JKNF	HOSE, WHITE VINYL 53" W/ WASHERS	23	834-013JKCP	PEDAL BRACKET
7	919-243JKNF	GASKET, .685 X .375 X .125	24	625-006JKNF	SCREW, PAN HEAD 5/16-18 UNC
8	777-019JKKCP	SPRAY, ANGLED NOZZLE W/ WASHER	25	834-010JKNF	SPRING, LH PEDAL
9	417-019JKCP	FLANGE, 1.94 X .88 X .11	26	834-012JKNF	PEDAL STOP
10	-----	VALVE BODY (NOT SOLD SEPARATELY)	27	76-008JKNF	SCREW, ROUND HEAD 6-32
11	217-XTLHJKNF	CARTRIDGE, SLO-COMPRESSION (LH)	28	173-032JKNF	SCREW, ROUND HEAD 1/4-20 X 1/2
12	1-246JKCP	NUT, CAP LOOSE KEY 1-1/8-18 UNEF	29	834-011JKNF	SPRING, RH PEDAL
13	1-144JKCP	BUTTON	30	625-061JKRCF	BOLT, SHOULDER 3/8-24 UNF X 5/8 HEX
14	293-006JKRCF	TEE HANDLE (INCLUDES SCREW)	31	745-025JKNF	SCREW, PEDAL 3/8-24 UNF
15	528-020JKCP	NIPPLE, 1/2 NPT X 4-1/4	32	834-107JKNF	PEDAL ASSEMBLY (COLD)
16	1-043JKNF	GASKET, CAP 1 X .80 X .09	33	834-007JKNF	PEDAL ASSEMBLY (HOT)
17	217-XMVCLHJKNF	LH SLO-COMP. METAL VOL. CONTROL			