

CHICAGO FAUCETS
a Geberit company

2100 South Clearwater Drive
Des Plaines, IL 60018
Phone: 847-803-5000
Fax: 847-803-5454
www.chicagofaucets.com

REPAIR PARTS

BY: SID DATE: 01-04-08
CHK: *[Signature]* REV:

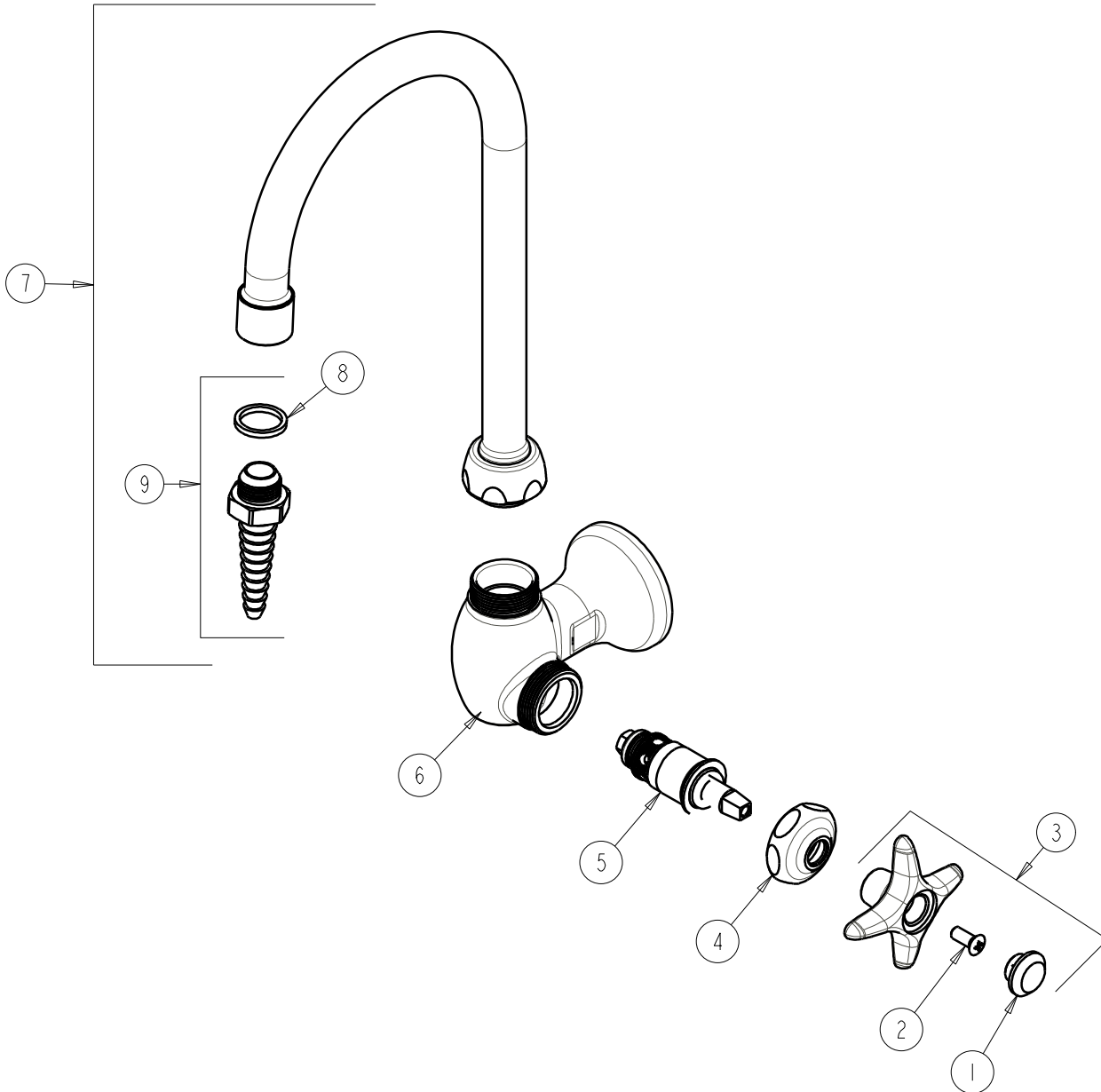
FITTING NO.

933-CP

SUBMITTED MODEL NO.

ITEM NO.

FOR TECHNICAL ASSISTANCE
1-800-TEC-TRUE (1-800-832-8783)



ITEM	PART NO.	DESCRIPTION	ITEM	PART NO.	DESCRIPTION
1	216-178JKNF	BUTTON 'CW'	6	-----	VALVE BODY (NOT SOLD SEPARATELY)
2	420-010JKRCF	SCREW, 10-32 UNC PH 1/2	7	GN2BE7JKCP	GN SPOUT B TYPE END
3	204-CWJKCP	HANDLE ASSEMBLY	8	229-003JKNF	WASHER
4	1-214JKCP	CAP	9	E7JKCP	SERRATED HOSE NOZZLE
5	217-XTLHJKNF	CARTRIDGE, SLO-COMPRESSION			