

**CHICAGO FAUCETS**  
a Geberit company

2100 South Clearwater Drive  
Des Plaines, IL 60018  
Phone: 847-803-5000  
Fax: 847-803-5454  
www.chicagofaucets.com

**REPAIR PARTS**

FITTING NO.

**946-317CP**

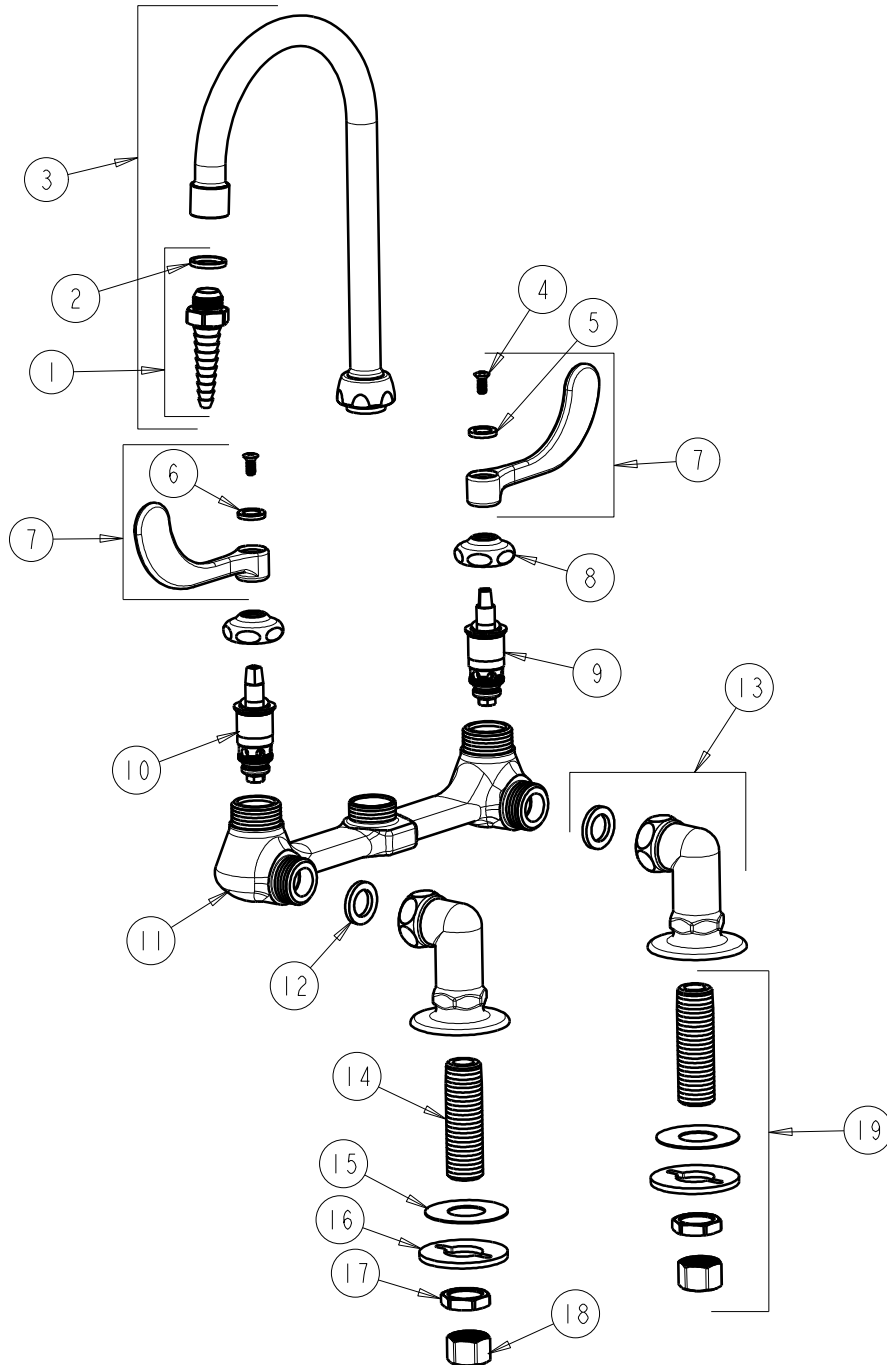
SUBMITTED MODEL NO.

ITEM NO.

**FOR TECHNICAL ASSISTANCE**  
1-800-TEC-TRUE (1-800-832-8783)

BY: SID DATE: 07-11-06

CHK: *[Signature]* REV: 06-01-09



ITEM	PART NO.	DESCRIPTION	ITEM	PART NO.	DESCRIPTION
1	E7JKCP	SERRATED HOSE NOZZLE	11	—	VALVE BODY (NOT SOLD SEPARATELY)
2	229-003JKNF	WASHER	12	1-011JKNF	WASHER, .97 X .62 X .12
3	GN2BE7JKCP	GN SPOUT B TYPE END	13	SSJKCP	ANGLE SHANK ASSEMBLY w/ WASHER
4	420-010JKRCF	SCREW, 10-32 UNC PH 1/2	14	748-002JKRBF	INLET SHANK 1/2-NPSM
5	633-023JKNF	INDEX BUTTON (RED)	15	52-007JKNF	WASHER, RUBBER
6	633-123JKNF	INDEX BUTTON (BLUE)	16	807-112JKNF	WASHER
7	317-PRJKCP	HANDLE, 4" WRISTBLADE (PAIR)	17	49-004JKRBF	LOCKNUT
8	1-214JKCP	CAP	18	49-005JKRBF	COUPLING NUT
9	1-100XTJKNF	QUATURN UNIT (LH)	19	748-002JKRBF	SHANK ASSEMBLY
10	1-099XTJKNF	QUATURN UNIT (RH)			