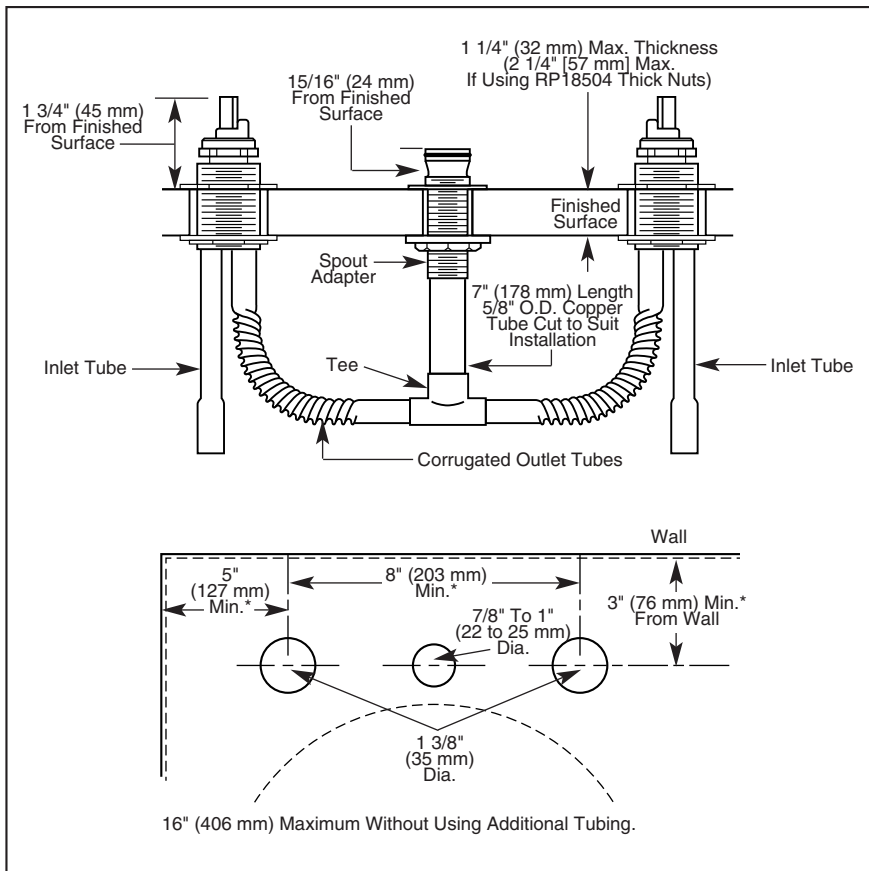


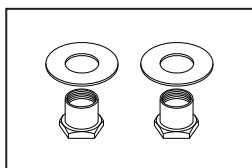
Submitted Model No.: _____

Specific Features: _____



RP16867

- End valve adjustment wrench (for R2700).



RP18504

- Thick tile mounting aid (for R2700)—adds 1" (25 mm) to end valves.



ROMAN TUB/WHIRLPOOL FAUCET ROUGH-IN KIT

- Two Handle Roman Tub Rough-In Kit
- Flexible Deck or Ledge Mount
- Conventional Rough-In Installation
- Three Hole Installation
- 16" (406 mm) Maximum Widespread (without using additional tubing)

ROUGH-IN KIT STANDARD SPECIFICATIONS:

- Solid fabricated brass end valves.
- Three hole installation.
- Widespread with 16" (406 mm) maximum without using additional tubing.
- 5/8" O.D. corrugated copper supply outlet tubes.
- Flexible deck or ledge mount installation.
- Control mechanism is a rotating cylinder type with stainless steel plate and 180° rotation, with replaceable non-metallic seats operating in stainless steel lined sockets.
- Hot and cold stems are interchangeable.
- Temperature and volume controlled with handles.
- Washerless.
- All operating parts shall be replaceable from the top.

NOTE: Trim kit must also be ordered to complete installation. Refer to separate trim kit specifications to determine the best kit for your situation.

WARRANTY

- Lifetime Faucet and Finish Limited Warranty to the original consumer purchaser to be free from defects in material and workmanship.
- 5 Year Limited Warranty for usage in all industrial, commercial and business applications.



COMPLIES WITH:

- ASME A112.18.1 / CSA B125.1



Delta reserves the right (1) to make changes in specifications and materials, and (2) to change or discontinue models, both without notice or obligation. Dimensions are for reference only. See current full-line price book or www.specselectonline.com for finish options and product availability.