



2100 South Clearwater Drive
Des Plaines, IL 60018
Phone: 800-566-2100
Fax: 847-803-5454
www.geberitnorthamerica.com

REPAIR PARTS

FITTING NO.

TURN CONTROL PP BWO

SUBMITTED MODEL NO.

BY: SID

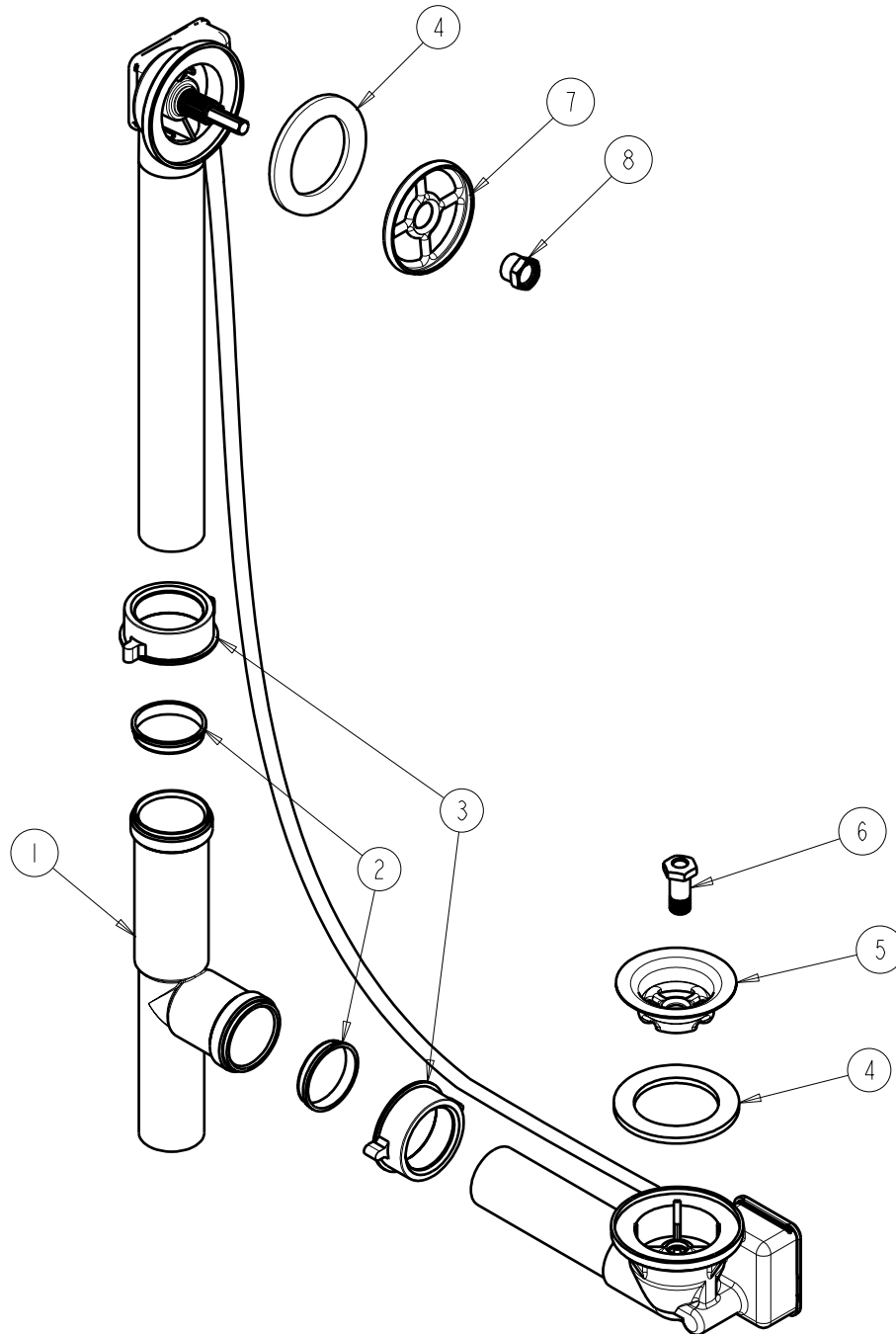
DATE: 04-22-08

CHK: *[Signature]*

REV:

ITEM NO.

FOR TECHNICAL ASSISTANCE
1-800-TEC-TRUE (1-800-832-8783)



ITEM	PART NO.	DESCRIPTION
1	241.618.00.1	TEE PVC D1.5"THDX1.5"THDX1.5"
2	241.619.00.1	COMPRESSION RING LDPE D1.5x1.5
3	241.620.00.1	NUT PP 1.5
4	241.615.00.1	GASKET PROFILE EPDM 60 D73x49x7
5	241.768.00.1	STRAINER, STAINLESS STEEL
6	865.066.22.1	DRAIN SCREW
7	241.616.00.1	FLANGE OVERFLOW
8	241.617.00.1	NUT OVERFLOW, BRASS