



VITREOUS CHINA

TOILET
DF-21-100

LAVATORIES

TOILETS

BIDETS / URINALS

CAST IRON

MAXWELL® DUAL FLUSH Round Front Toilet

10" Rough-in

Features:

- Dual Flush 1.1/1.6 gpf (4.0/6.0 Lpf)
- High Efficiency Toilet (HET)
- Round Front Bowl
- Glazed Trapway
- Reverse Trap
- Front Jet Flushing Action
- Top Mounted, Two-button Actuator
- Siphonic Flush Action Keeps Bowl Clean
- Available in White and Biscuit
- 2 Bolt Caps

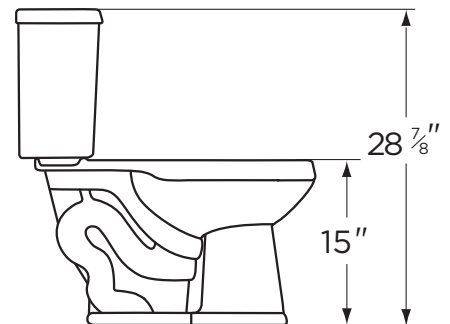
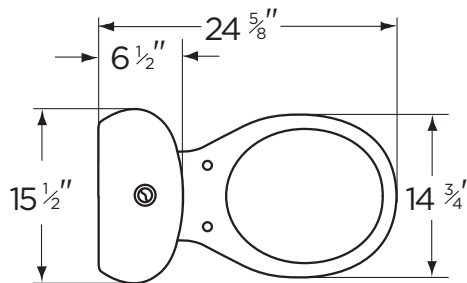


Dimensions:

Height 28 7/8"
 Width 15 1/2"
 Depth 24 5/8"
 Rough-in 10"
 Water Surface from Rim 5"
 Trapway 1 3/4"
 Water Surface 9 5/8" x 7 5/8"
 Water Seal 2 1/4"
 Shipping Weight 64 lbs

Specifications: Bowl—#21-152 Round Front
Seat not included

Tank—#DF-28-195



THIS FIXTURE QUALIFIES
 ACCORDING TO ASME TEST
 PROCEDURES AS A WATER CLOSET
 WITH AN AVERAGE CONSUMPTION
 OF 1.6 gpf (6 Lpf) OR LESS.



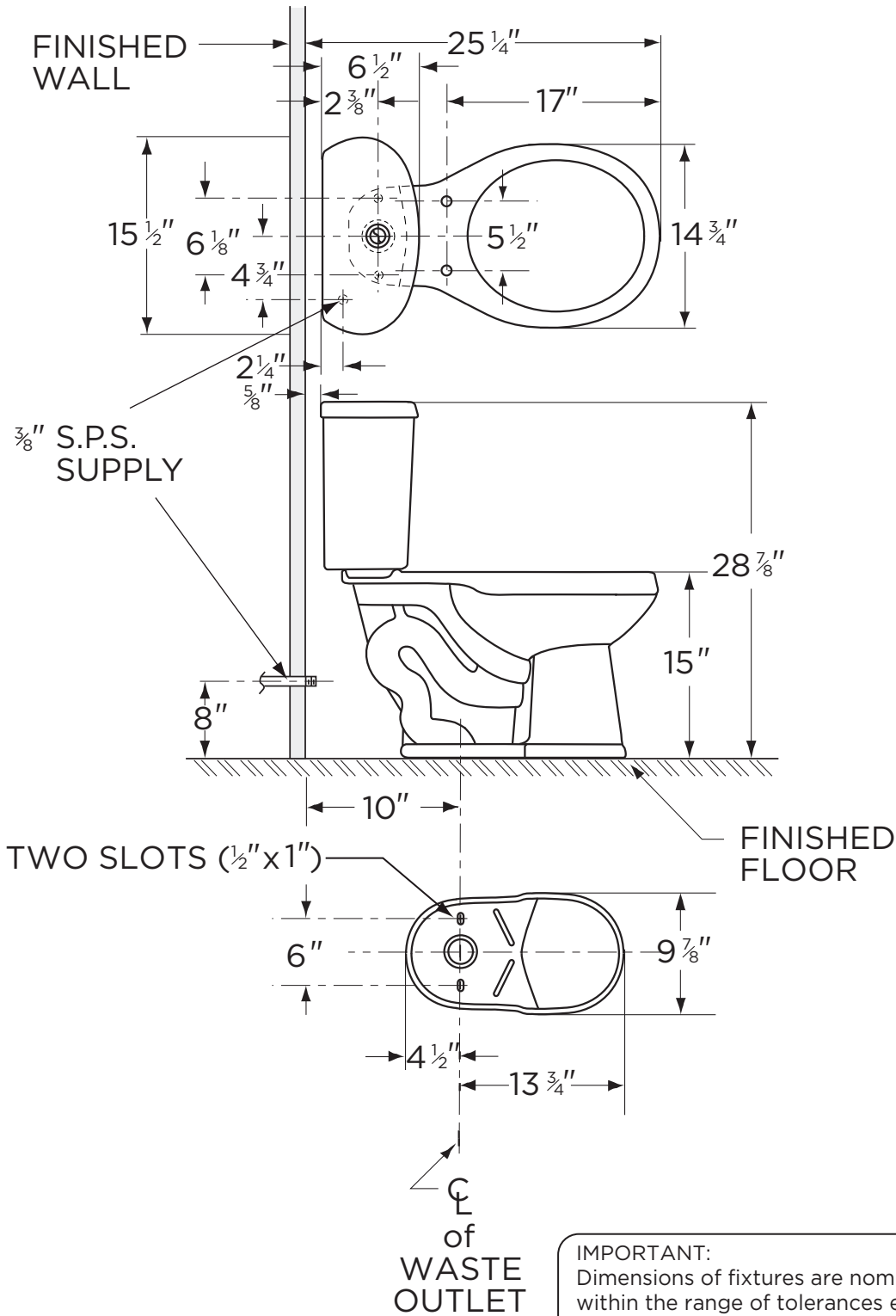
www.gerberonline.com

Job Name	
Date	
Model Specified	
Quantity	
Customer	
Contractor	
Architect/engineer	



1.1/1.6 gpf (4.0/6.0 Lpf) MAXWELL® DUAL FLUSH TOILET

DF-21-100
Round Front Toilet, 10" Rough-in
(Bowl 21-152 with Tank DF-28-195)



NOTES:
All dimensions are in inches.
Illustrations may not be drawn to scale.

IMPORTANT:
Dimensions of fixtures are nominal and may vary within the range of tolerances established by ASME Standard A 112.19.2.
THIS FIXTURE QUALIFIES ACCORDING TO ASME TEST PROCEDURES AS A WATER CLOSET WITH AN AVERAGE CONSUMPTION OF 1.6 gpf (6 Lpf) OR LESS.