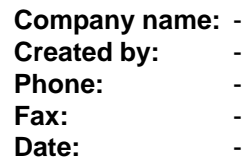
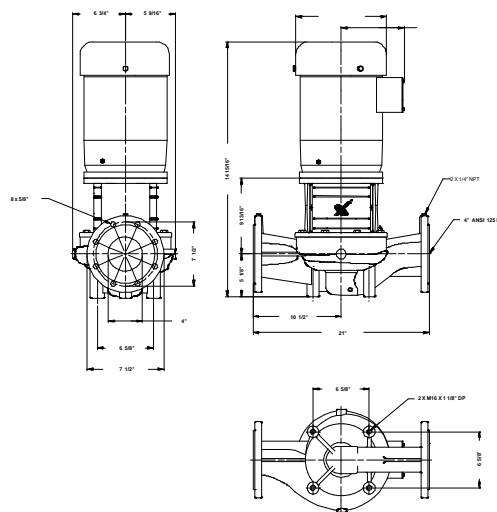
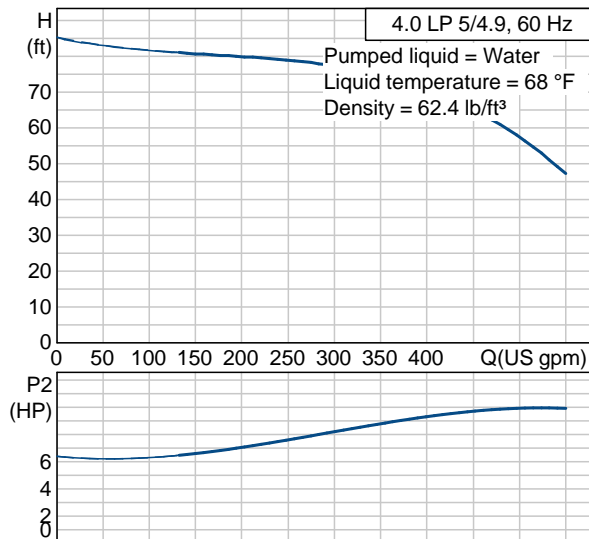


Position	Count	Description	Unit price
	-1	<p><b>4.0 LP 5/4.9 U-G-A-BUBE</b></p>  <p>Product photo could vary from the actual product</p> <p>Product No.: 48Z90121 Single-stage centrifugal in-line single-head pump.</p> <p>The in-line design with opposite suction and discharge ports enables mounting in pipework or on a concrete foundation.</p> <p>The shaft seal is a corrosion-resistant maintenance-free mechanical seal.</p> <p><b>Liquid:</b> Liquid temperature range: 32 .. 284 °F Liquid temp: 68 °F Density: 62.4 lb/ft³</p> <p><b>Technical:</b> Actual calculated flow: 418 US gpm Resulting head of the pump: 69.1 ft Actual impeller diameter: 4.88 in Shaft seal: BUBE</p> <p><b>Materials:</b> Pump housing: Cast iron EN-JL1040 ASTM 35 B - 40 B Impeller: Stainless steel DIN W.-Nr. 1.4301 AISI 304</p> <p><b>Installation:</b> Max pressure at stated temperature: 145 psi / 288 °F 232 psi / 212 °F Flange standard: ANSI Pipe connection: 4" Pressure stage: 125 Lb.</p> <p><b>Electrical data:</b> Number of poles: 2 Power (P2) required by pump: 10.1 HP</p>	On request

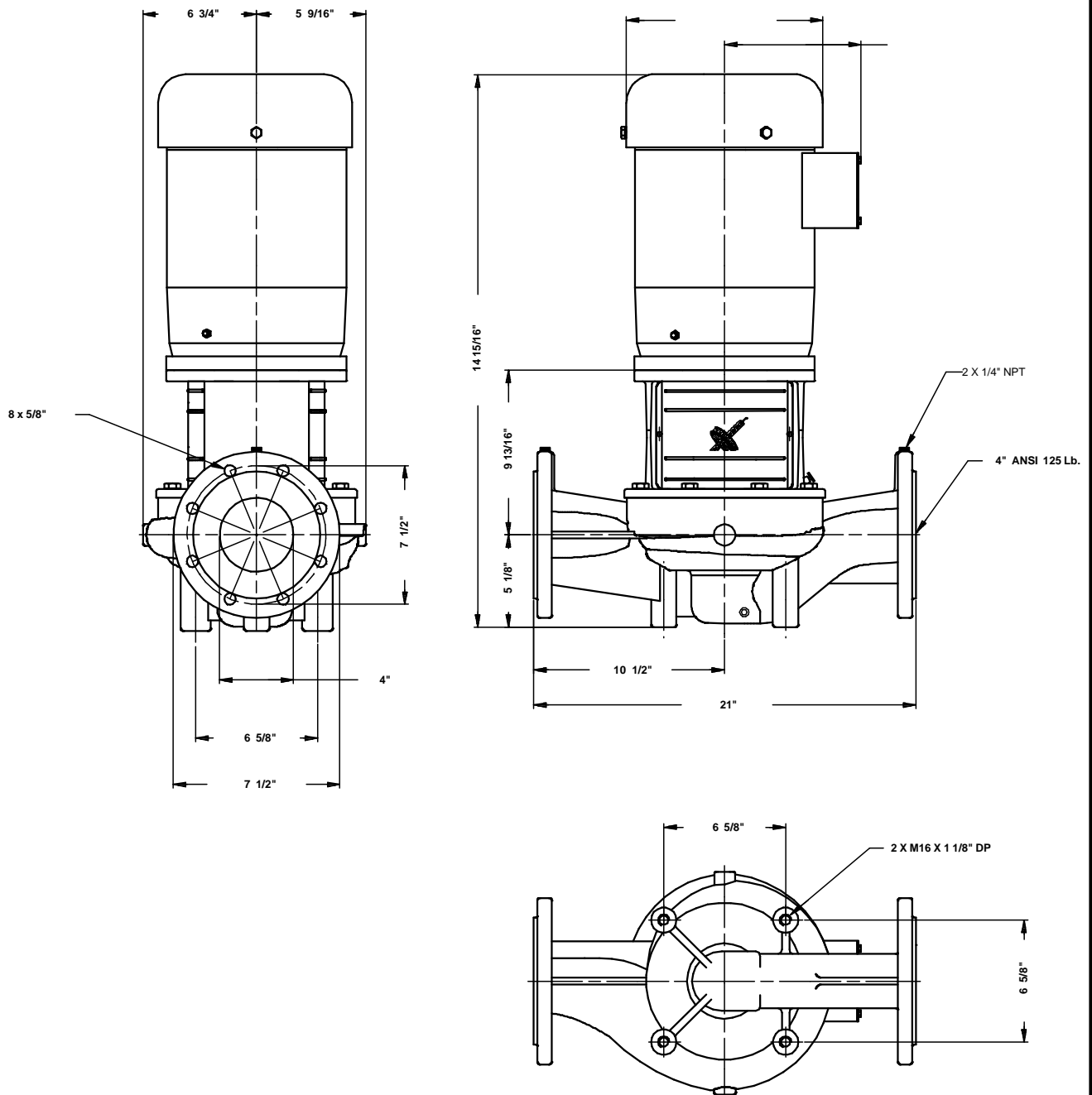


Printed from Grundfos CAPS [2011.05.069]

Description	Value
Product name:	4.0 LP 5/4.9 U-G-A-BUBE U-G-A BUBE
Product Number:	48Z90121
EAN number:	5700390909710
Technical:	
Actual calculated flow:	418 US gpm
Resulting head of the pump:	69.1 ft
Actual impeller diameter:	4.88 in
Shaft seal:	BUBE
Pump version:	U
Model:	C
Materials:	
Pump housing:	Cast iron EN-JL1040 ASTM 35 B - 40 B
Impeller:	Stainless steel DIN W.-Nr. 1.4301 AISI 304
Material code:	A
Installation:	
Max pressure at stated temperature	145 psi / 288 °F 232 psi / 212 °F
Flange standard:	ANSI
Connect code:	G
Pipe connection:	4"
Pressure stage:	125 Lb.
Liquid:	
Liquid temperature range	32 .. 284 °F
Liquid temp:	68 °F
Density:	62.4 lb/ft³
Electrical data:	
Number of poles:	2
Power (P2) required by pump	10.1 HP
Main frequency:	60 Hz
Others:	
Gross weight:	187 lb
Shipping volume:	10.6 ft³
Sales region:	Namreg



**48Z90121 4.0 LP 5/4.9 60 Hz**



Note! All units are in [mm] unless others are stated.  
 Disclaimer: This simplified dimensional drawing does not show all details.