

# 148-153

## QuantumOne™

Elongated Front, SmartHeight™, Vitreous China, Two-Piece Toilet



### Features

- High efficiency (HET), pressure assist vessel
- 1.0 gpf / 3.8 lpf ultra-low water consumption
- SAVES up to 40% more water than conventional 1.6 gpf flushing systems
- SmartHeight™ (17-1/4" bowl)
- 12" rough-in
- Trip levers
  - Model 45 left hand, chrome-plated metal trip lever
  - Model 47 chrome-plated push button actuator
  - Model 49 right hand, chrome-plated metal trip lever
- 2-1/8" glazed trapway
- The Mansfield® limited lifetime warranty (china)
- Ten year limited vessel warranty
- Available in White and Standard Colors: Biscuit and Bone







Elongated Front



Model 148-153  
Toilet seat not included

### Components





| Model # | Description   | Codes/Standards   |
|---------|---|---|
| 148-153 | Elongated front, SmartHeight™ pressure-assist, two-piece toilet. Less toilet seat and supply. Specify color.    |     |
| 148     | Elongated front, SmartHeight™ toilet bowl only. Less toilet seat. Specify color.                                |   |
| 153     | Pressure-assist tank and cover only with left hand, chrome-plated metal trip lever. Less supply. Specify color. |   |
| 153RH   | Same as model 153, except with right hand, chrome-plated, metal trip lever.                                     |   |
| 154     | Same as model 153, except with push button actuator.  |   |
| SB400   | Elongated, SmartClose™ toilet seat.   |   |

# 148-153 QuantumOne™

Elongated Front, SmartHeight™, Vitreous China, Two-Piece Toilet

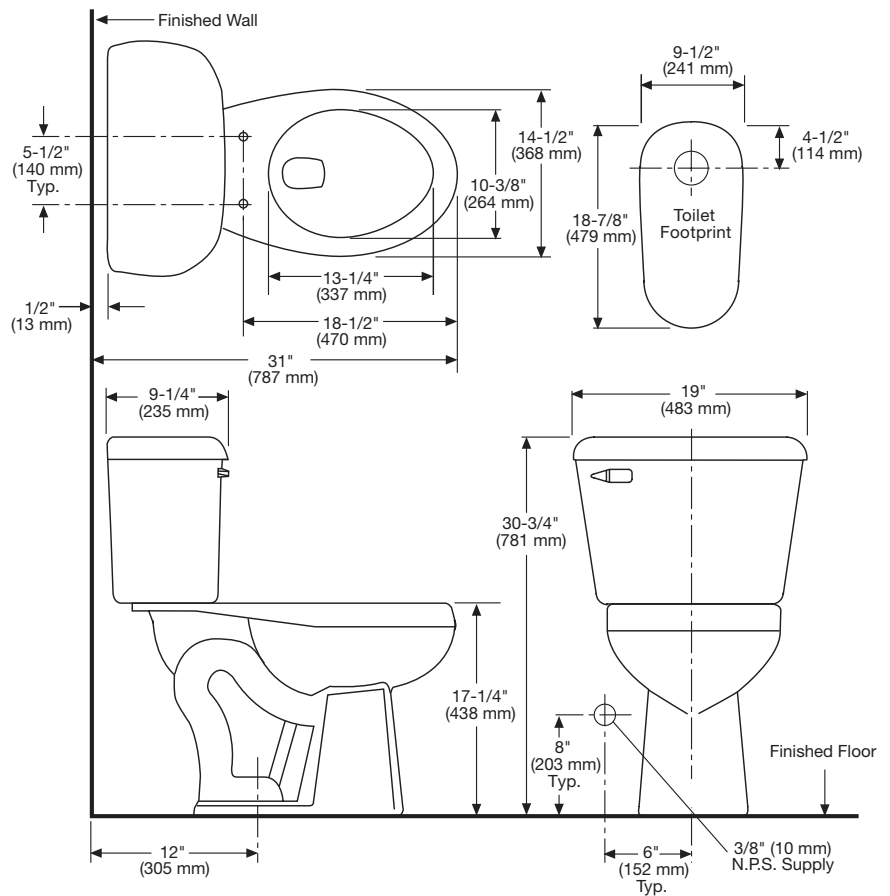


## Specifications

| Model # | Description  | Codes/Standards  |
|---------|--|--|
| 148-153 | Elongated front (1.0 gpf/3.8 lpf) two-piece toilet |     |

| Specification        | Description                          | Specification   | Description   |
|----------------------|--------------------------------------|-----------------|---|
| Material             | Vitreous China                       | Trap Diameter   | 2-1/8"  |
| Water Pressure Range | 35 to 80 PSI                         | Trap Seal       | 3"  |
| Flush System         | Flushmate IV™ Pressure Assist Vessel | Rough-in        | 12"   |
| Water Usage          | 1.0 gpf / 3.8 lpf                    | Shipping Weight | Model 148 - 52 lbs. (23.5 kg)                                     |
| Water Surface Area   | 9-1/4" X 11-3/8"                     |                 | Model 153/153RH/154 - 41 lbs. (18.5 kg)                           |
| MaP Rating           | 1000 grams                           | Warranty        | Vitreous China - Limited Lifetime<br>Tank Trim - Limited One Year |

## Technical Information



See our complete line of acrylic and vitreous china bathroom fixtures, plastic tank trim and plumbing products.

These dimensions are nominal and subject to change without notice.

Fixture performance and specifications meet or exceed ASME A112.19.2-2008/CSA B45.1-08 standards, and other state and local codes.