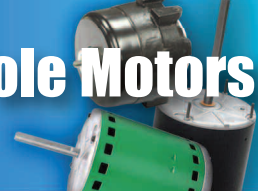
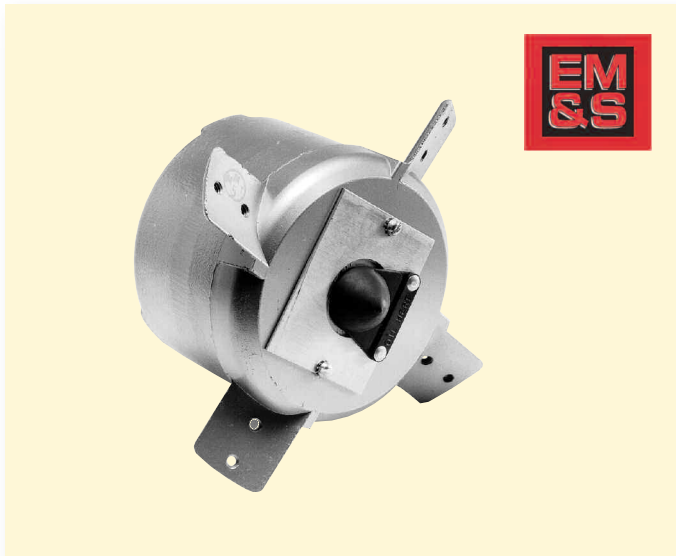


Fan Motors - Single Phase - PSC or Shaded Pole Motors

5 1/4 inch dia. MARS SERIES **000**



EM&S



EM&S 4 lug PSC motors

features:

- Ball bearings
- 5 1/4 inch diameter models
- 4 lug PSC type
- All motors have two mounting holes in each lug (obsolete S16 series had three)
- Capacitor included on PSC motors

specifications:

- Single phase, 60 Hertz
- overload protection
- Continuous, air over
- select fan blades below

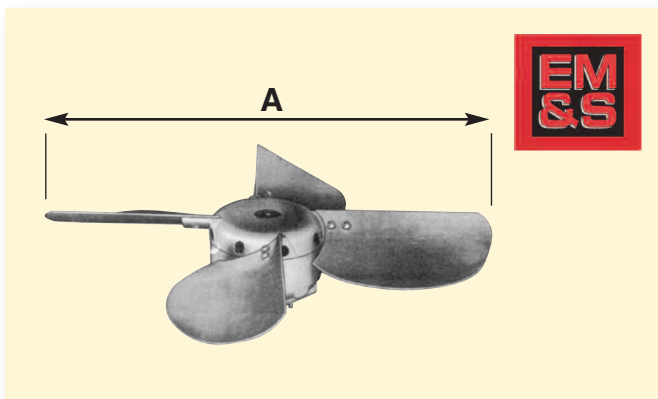
MARS NO.	EMS NO.	HP	VOLTS	AMPS	RPM	ROT OSE	CAP INCLUDED	HUB TYPE ⁽¹⁾	NO. OF LUGS
----------	---------	----	-------	------	-----	---------	--------------	-------------------------	-------------

5 1/4 Inch Permanent Split Capacitor - 4 Lugs - Ball Bearings

00024	S60BHU4L6-C2	1/6	230	1.3	1050	CCW	2/440	unvented	4
00025 ⁽²⁾	S60BHU4L9-C1	1/5	230	1.4	1050	CCW	3/440	unvented	4
00026	S60BCU4L1-C1	1/5	115	3.5	1050	CCW	10/370	unvented	4
00027	S60BHU4L3-C1	1/5	230	1.8	1050	CCW	3/440	radial vents	4

(1) Motors with unvented hubs are not interchangeable with motors having vented or open hubs

(2) Replaces EMS No. S60HUB2



EM&S Aluminum Fan Blades For ESP 60 and S Series Motors

Determine diameter required from old motor with blades mounted. Two mounting holes in each blade.

MARS NO.	EMS NO.	BLADES PER SET	DIAMETER "A" WITH BLADES MOUNTED	APPLICATION
95154	M-7657 ESP60 and S60	4	15 inches	unit heaters
95184	M-1918	4	18 inches	unit heaters
95185	M-12128	4	18 inches	air conditioners
95204	L-7471-2	4	20 inches	A/C & unit heaters
95214	M-12185	4	21 3/8 inches	air conditioners
95244	L-12199	4	24 inches	air conditioners