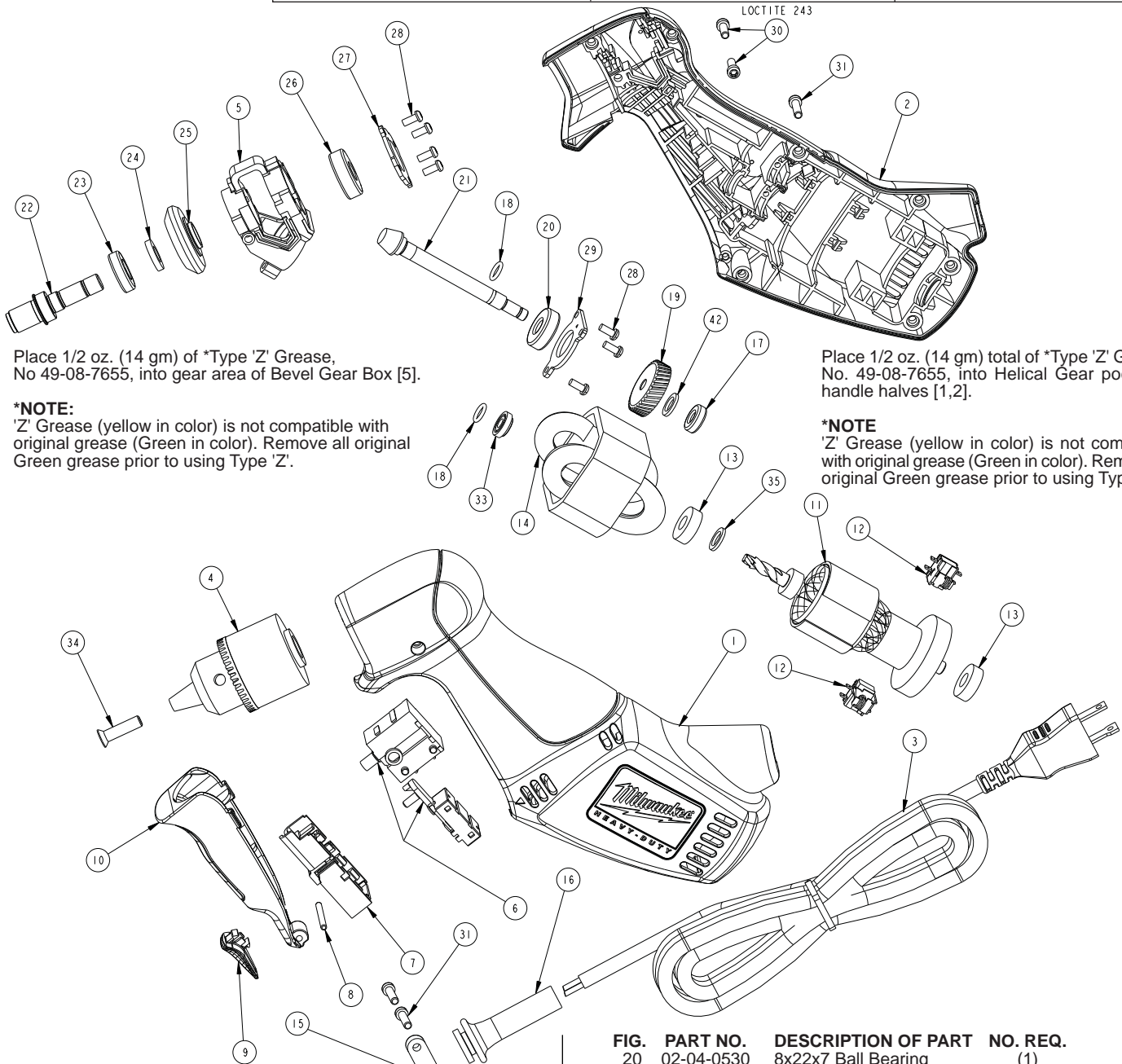




# SERVICE PARTS LIST

**BULLETIN NO.**  
**54-06-0372**

SPECIFY CATALOG NO. AND SERIAL NO. WHEN ORDERING PARTS		REVISED BULLETIN	DATE
<b>CLOSE QUARTERS DRILL</b>			Aug. 2008
CATALOG NO.	<b>0370-20</b>	STARTING SERIAL NO.	<b>B11A</b>
		WIRING INSTRUCTION <b>58-01-2372</b>	



Place 1/2 oz. (14 gm) of \*Type 'Z' Grease, No 49-08-7655, into gear area of Bevel Gear Box [5].

**\*NOTE:**  
'Z' Grease (yellow in color) is not compatible with original grease (Green in color). Remove all original Green grease prior to using Type 'Z'.

Place 1/2 oz. (14 gm) total of \*Type 'Z' Grease, No. 49-08-7655, into Helical Gear pocket of handle halves [1,2].

**\*NOTE:**  
'Z' Grease (yellow in color) is not compatible with original grease (Green in color). Remove all original Green grease prior to using Type 'Z'.

FIG.	PART NO.	DESCRIPTION OF PART	NO. REQ.
1	31-44-1575	Handle Half	(1)
2	31-44-1578	Handle Half	(1)
3	22-64-1822	Cord	(1)
4	48-66-1540	3/8" Drill Chuck	(1)
5	28-90-0300	Gear Box	(1)
6	23-66-1070	Switch	(1)
7	31-89-0040	F/R Switch Holder	(1)
8	06-65-0080	Steel Dowel Pin	(1)
9	45-24-0140	F/R Switch	(1)
10	45-72-0190	Switch Trigger	(1)
11	16-10-0840	Service Armature	(1)
12	22-22-0375	Brush Tube w/ Wires & Spring	(2)
13	02-04-0510	8x19x6 Ball Bearing	(2)
14	18-10-0175	Service Field	(1)
15	31-17-0300	Cord Clamp	(1)
16	44-76-0315	Cord Protector	(1)
17	02-04-0515	6x15x5 Ball Bearing	(1)
18	45-36-1670	O-ring, 7.4 ID x 1.8 Dia.	(2)
19	32-42-1100	Helical Gear	(1)

FIG.	PART NO.	DESCRIPTION OF PART	NO. REQ.
20	02-04-0530	8x22x7 Ball Bearing	(1)
21	32-60-2715	Bevel Pinion	(1)
22	38-50-2410	Output Shaft	(1)
23	02-04-0540	10x22x6 Ball Bearing	(1)
24	45-88-0885	Washer 9.2 ID x 17 OD	(1)
25	32-60-2710	Bevel Gear	(1)
26	02-04-0535	9x26x8 Ball Bearing	(1)
27	44-66-0315	Fastening Plate	(1)
28	05-74-0740	Screw M3.5 x 8	(7)
29	44-66-0320	Fastening Plate	(1)
30	05-74-0735	Screw M4 x10	(2)
31	05-74-0730	Set Screw M4 x 16	(9)
33	42-40-0145	Bushing	(1)
34	05-88-1440	Chuck Screw	(1)
35	45-88-0888	Washer 8.5 ID x 13 OD	(1)
42	45-88-0890	Washer 6.1 ID x 11 OD	(1)
	12-20-1372	Nameplate (Not Shown)	(1)
	48-66-3240	Chuck Key (Not Shown)	(1)
	48-66-4040	Chuck Key Holder (Not Shown)	(1)

**MILWAUKEE ELECTRIC TOOL CORPORATION**  
13135 W. LISBON RD., BROOKFIELD, WI 53005