



SERVICE PARTS LIST

BULLETIN NO.
54-36-0601

SPECIFY CATALOG NO. AND SERIAL NO. WHEN ORDERING PARTS		REVISED BULLETIN 54-36-0600	DATE Jan. '85
RIGHT ANGLE DRIVE UNIT (For Reversing Drills)		WIRING INSTRUCTION	
CATALOG NO. 48-06-2871	STARTING SERIAL NO.		

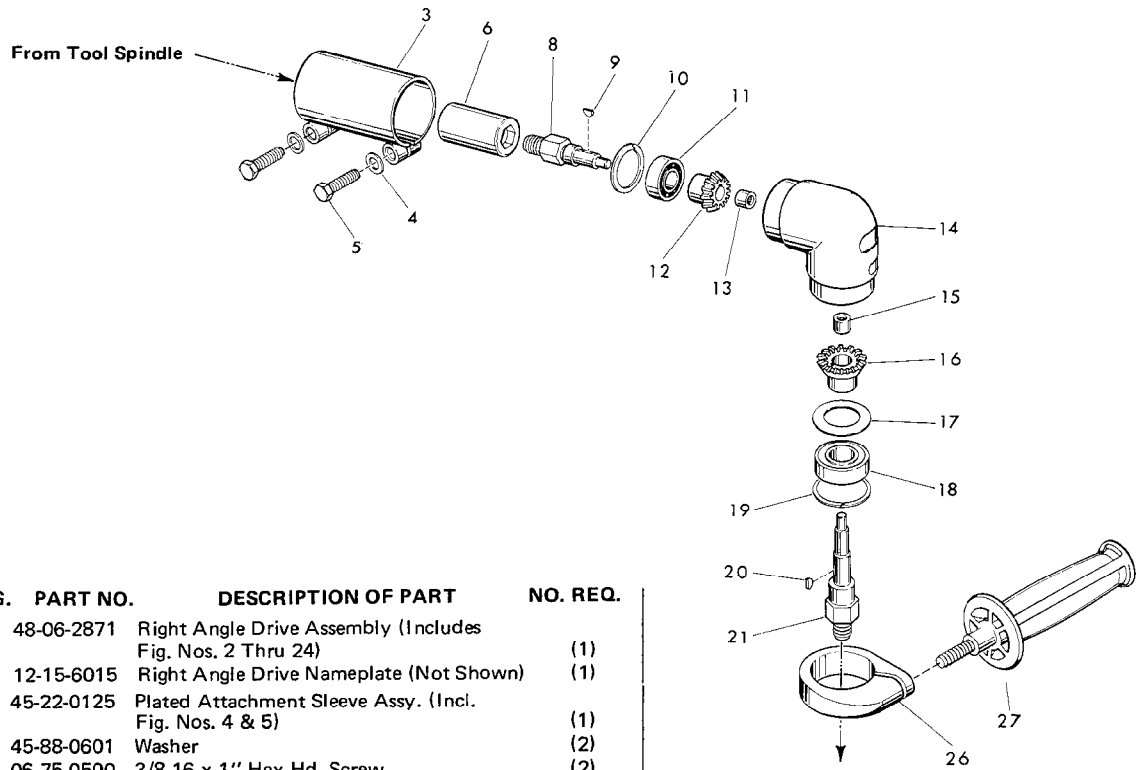


FIG.	PART NO.	DESCRIPTION OF PART	NO. REQ.
1	48-06-2871	Right Angle Drive Assembly (Includes Fig. Nos. 2 Thru 24)	(1)
2	12-15-6015	Right Angle Drive Nameplate (Not Shown)	(1)
3	45-22-0125	Plated Attachment Sleeve Assy. (Incl. Fig. Nos. 4 & 5)	(1)
4	45-88-0601	Washer	(2)
5	06-75-0500	3/8-16 x 1" Hex Hd. Screw	(2)
6	42-90-0170	Female Hex Coupling (Hex on Both Ends) For "D" Handle Tools Only	(1)
	42-90-0175	Female Hex Coupling (Hex on Both Ends) For Magnum Drill Only	(1)
7	14-72-0110	Reversing Drive Assembly (Includes Fig. Nos. 8 thru 21)	(1)
8	38-50-2951	Reversing Spindle (High Speed)	(1)
9	06-42-1200	Woodruff Key	(1)
10	34-80-2300	Retaining Ring	(1)
11	02-04-1230	Ball Bearing	(1)
12	32-05-1021	Bevel Gear *	(1)
13	02-50-1610	Needle Bearing	(1)
14	28-50-7551	Right Angle Housing	(1)
15	02-50-1610	Needle Bearing	(1)
16	32-05-1001	Bevel Gear *	(1)
17	45-88-0525	Washer	(1)
18	02-04-1745	Ball Bearing	(1)
19	34-80-2900	Retaining Ring	(1)
20	06-42-1200	Woodruff Key	(1)
21	38-50-2801	Reversing Spindle (Low Speed)	(1)
22	44-60-0190	Knockout Pin (Not Shown)	(1)
23	49-96-0080	3/16" Socket Wrench (Not Shown)	(1)
24	49-96-4060	Open End Wrench(9/16" & 11/16") (Not Shown)	(1)
* Should be Ordered in Sets			
25	49-15-0200	Auxiliary Side Handle (Fig. No. 26 & 27)	(1)
26	28-82-0130	Handle Ring	(1)
27	43-62-0885	Side Handle	(1)

Add Chuck & L.H. Screw