



ENGINEERING EXCELLENCE

Motegi Series #4MT200T

SPECIFICATION SHEET

DESCRIPTION

- Single Handle Tub Trim Set
- Metal Lever Handle
- Ceramic Disc Cartridge with Temperature Limit Stop
- 1/2" IPS Tub Spout
- 6-1/8" Spout Reach, Tub Spout Escutcheon
- Color Match Sleeve and Retaining Ring

FINISHES

- PC PVD Polished Chrome
- BN PVD Brushed Nickel
- PB PVD Polished Brass
- PN PVD Polished Nickel
- SS PVD Stainless Steel



#4MT200T SHOWN * ADA 

STANDARDS APPLICABLE

- ASME A112.18.1
- ANSI A117.1
- CUPC / IAPMO LISTED /ADA COMPLIANT

Model #: _____

Specific Features: _____

Project Name: _____

Submitted For: _____

| Model | Description | Finishes |
|----------------|--|---|
| #4MT200T | Single Handle Tub Trim Set | <input type="checkbox"/> PC <input type="checkbox"/> Other ____ |
| Required Valve | | |
| #4020B | Single Handle Tub And Shower Valve Set | <input type="checkbox"/> N/A |



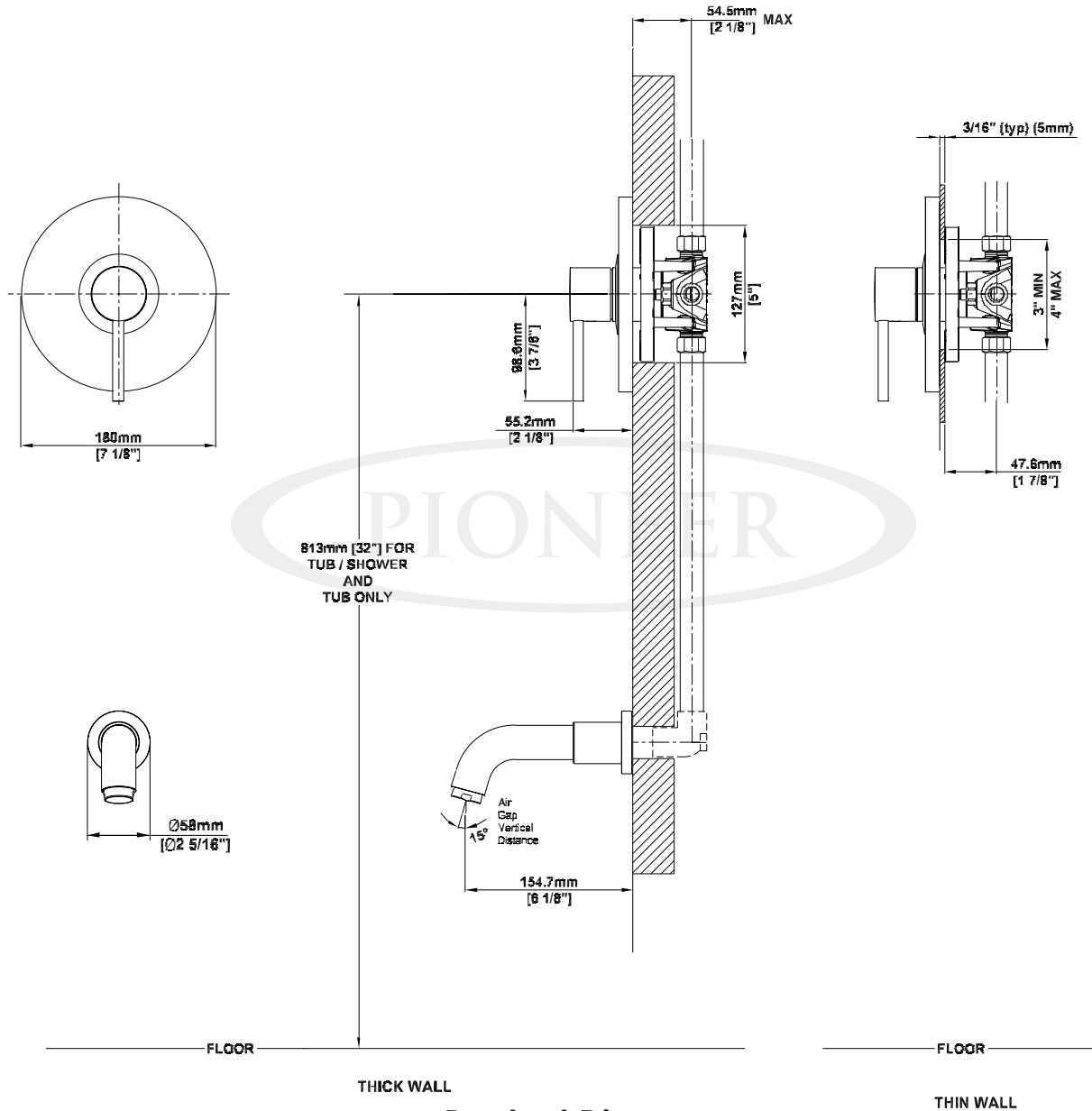
ENGINEERING EXCELLENCE

Pioneer:1-800-338-9468
 Commerce, CA 90040
 www.pioneerind.com
 Pioneer Industries, Inc. © 2012

DMSP4MT200T/REV. 06 2012
 Page 1 of 2

Installation Note:

Please refer to Installation Guide For this Product. Also Please refer to Installation Guide For the Rough-in Valve. Avoid Cross Flow Connections. Do not install a Shut off valve to any of the outlets. Install a 305 MM [12"] Straight Pipe with single elbow for bath between the rough-in valve and the tub spout.



ENGINEERING EXCELLENCE

Pioneer: 1-800-338-9468
 Commerce, CA 90040
 www.pioneerind.com
 Pioneer Industries, Inc. © 2012