



Ultra-Sense®

Sensor Activated Lavatory Faucet S-6060

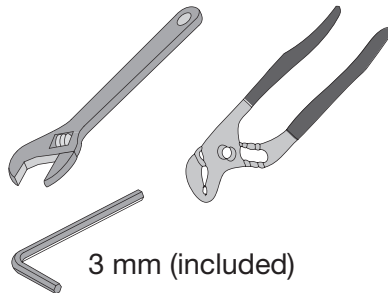
Installation and Service Instructions



Model Numbers

- S-6060.....Sensor Faucet
- S-6060-G...Sensor Faucet with grid strainer drain assembly

Tools & Materials



☎ Need Help?

Symmons customer service:
 (800) 796-6667, (781) 848-2250
 Email: customerservice@symmons.com
 Monday - Friday 8:00 am - 7:00 pm EST

🌐 www.symmons.com/service

- Technical help
- Product information
- Warranty policy

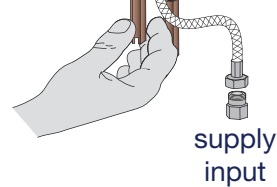
Quick Install Guide *Ultra-Sense Lavatory Faucet, S-6060*

Single hole mount

Step 1
Attach faucet to deck



Step 2
Connect water supply lines

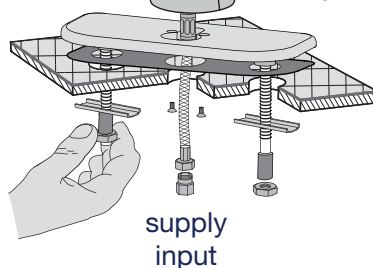


Three hole mount

Step 1
Attach faucet to deck with deck plate



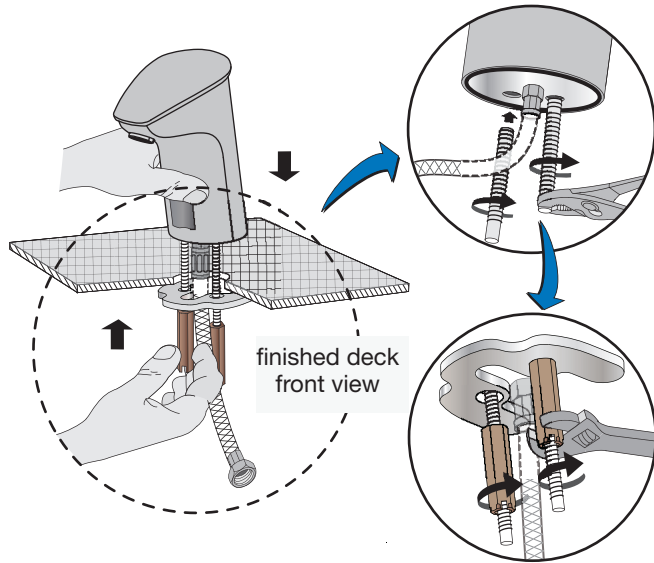
Step 2
Connect water supply lines



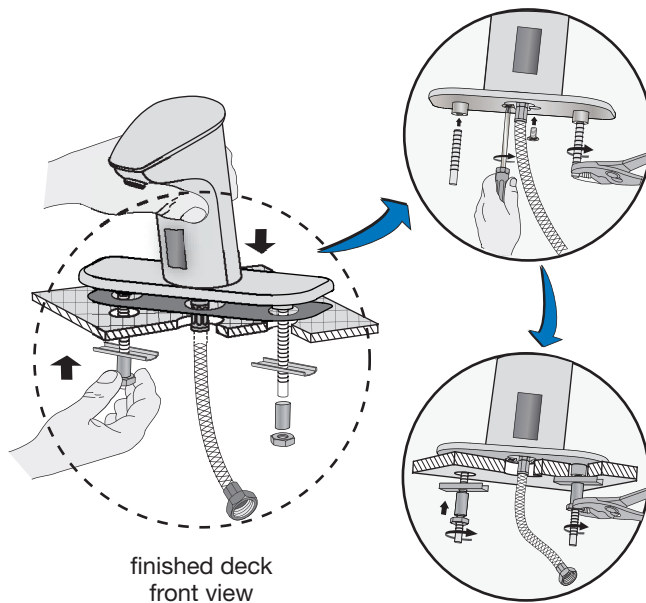
Installation Instructions

Important! Prior to connecting the water supply, ensure supply lines are flushed. Particles can clog filter and result in malfunction. Excessive particles from supply lines may require installing a separate efficient filter.

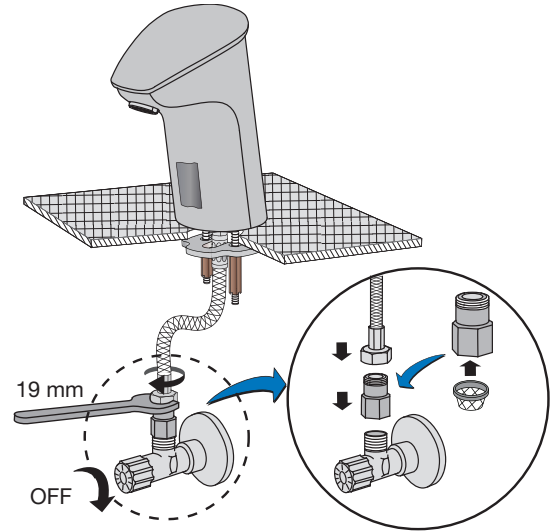
Step 1 Attach faucet to deck (1 hole) Single hole mount without deck plate



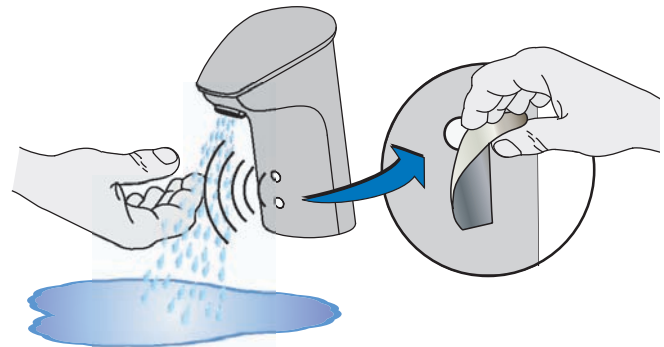
Step 1 Attach faucet to deck (3 hole) Three hole mount with deck plate



Step 2 Connect water supply line



Step 3 Test operation and check for leaks



Operation

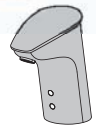
Sensor range is preset, 1/2 - 4 inches

Place hand under faucet, water will flow automatically for 10 seconds and shut off.



Auto shut-off, 1/2 to 1 second

Remove hands, water will stop automatically within 1/2 to 1 second.



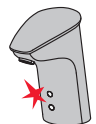
Security OFF after 10 seconds

Faucet will automatically shut off after continuous water flow for 10 seconds.



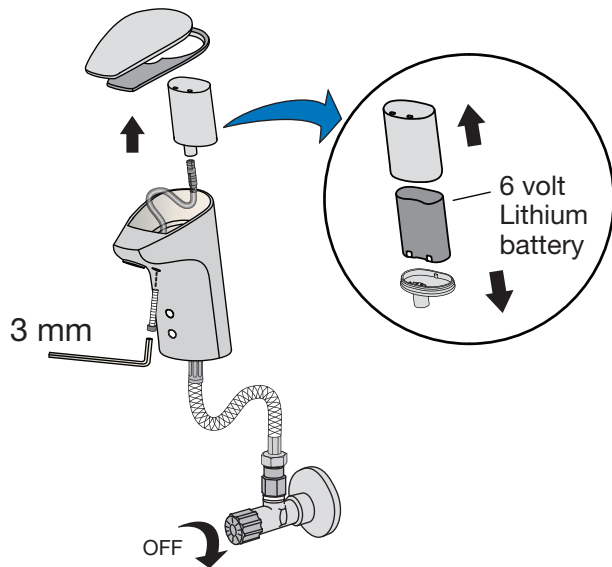
Weak or dead battery

LED will flash to signal battery is getting weak and should be replaced soon.

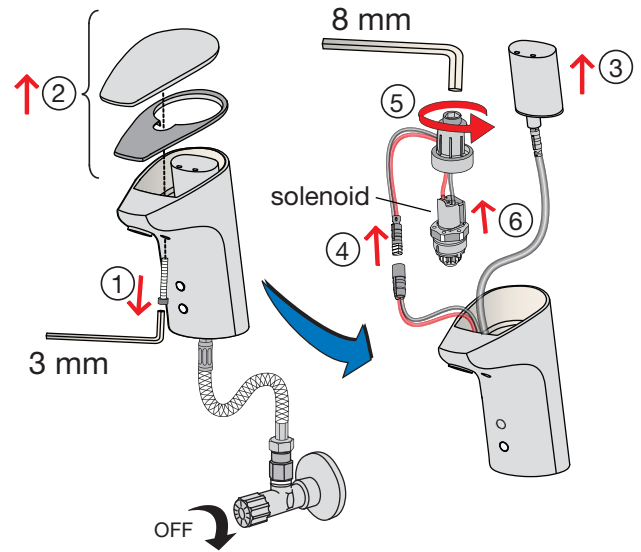


Service Instructions

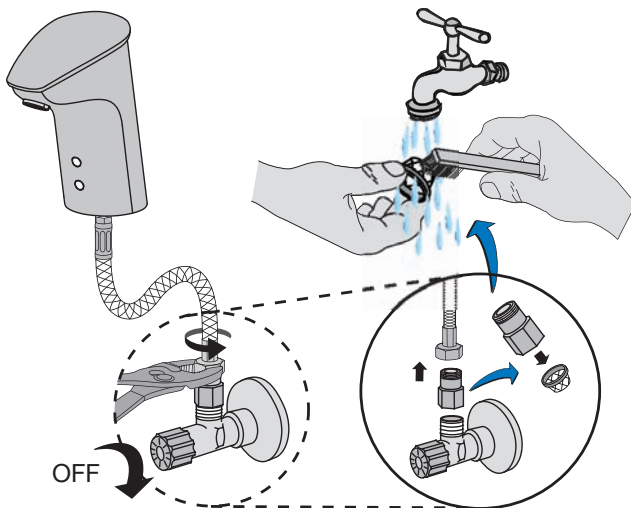
Battery replacement



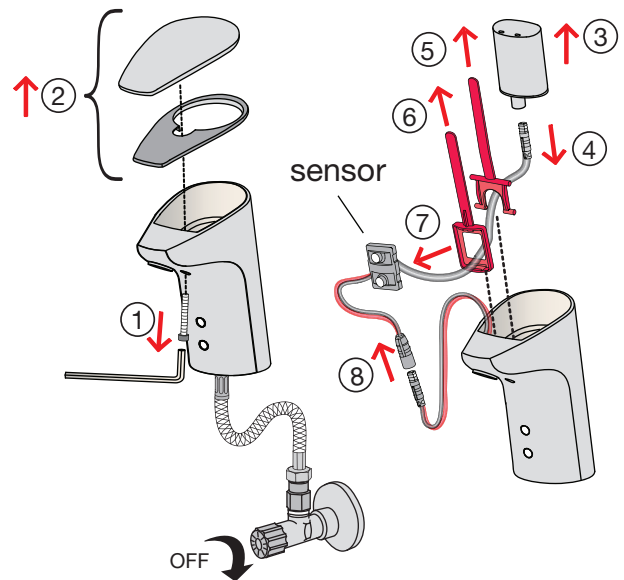
Solenoid valve replacement



Cleaning water supply strainer



Sensor replacement



Troubleshooting

No water flow

- No battery installed, battery connection is loose or battery power is low.
- Filter in strainer is clogged. Excessive clogged filter may require installing of separate efficient filter into supply line.
- Solenoid valve connector inside faucet is loose.
- Circuit board is faulty. Do not attempt repair, please contact Symmons customer service.
- Solenoid valve is faulty. Do not attempt repair, please contact Symmons customer service.

Faucet care

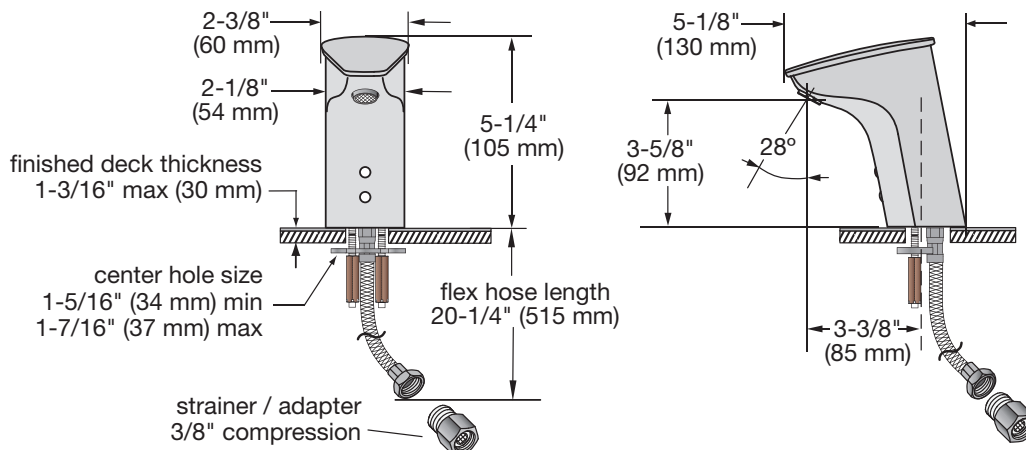
Cleaning surface finish

- Block sensor to prevent faucet from turning on while cleaning.
- Clean finish area by using mild soap and water or non-abrasive cleaner and then rinse immediately. A non-abrasive wax may be used to preserve finish area.

Precautions

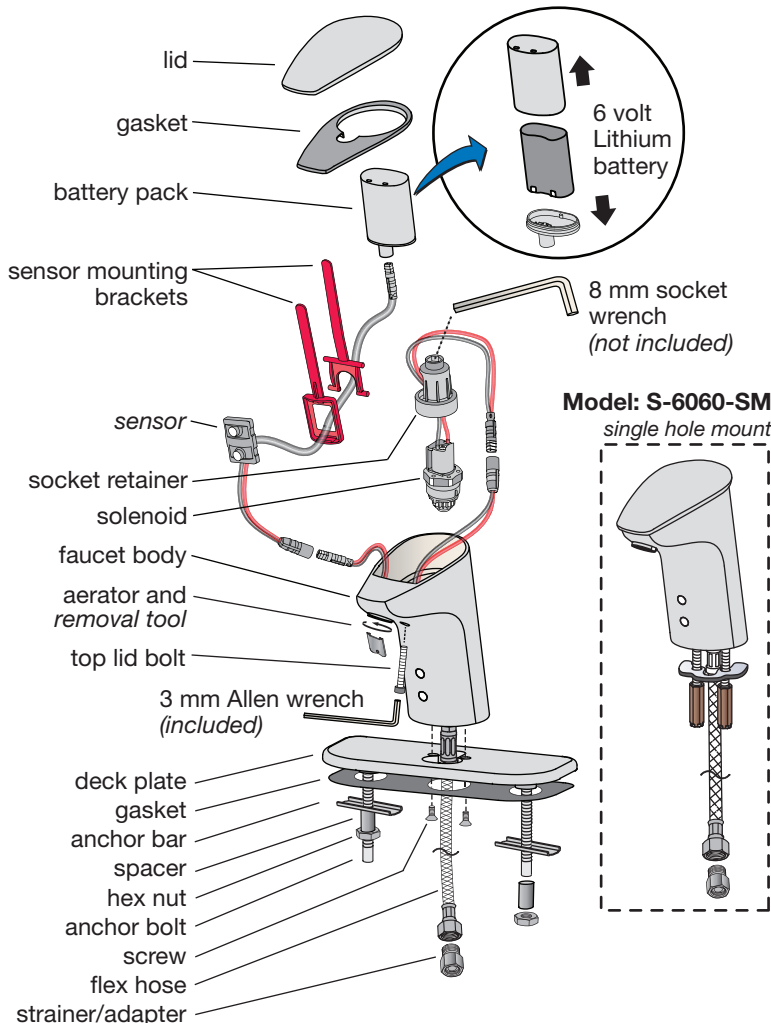
- Ensure sensor is not damaged through impact or scratches.
- Ensure sensor is not blocked or disturbed by any object within its detection range.
- Ensure that no strong light source is aimed directly at sensor or through a mirror.

Dimensions *Ultra-Sense Lavatory Faucet, S-6060*



Note: Dimensions subject to change without notice

Parts Assembly *Ultra-Sense Lavatory Faucet, S-6060*



Replacement Parts

Part Number	Item
SF-249	Battery pack kit with 6v Lithium battery, 2CR5
SF-247	Solenoid kit with membrane and socket retainer
SF-246	Sensor kit with mounting brackets
SSF-108 SF-181	Check / strainer kit ▪ for flex hose ▪ for copper tubing, (option -LST)
SF-158	Single hole mounting kit
SF-248	Top lid bolt <i>requires 3 mm socket wrench</i>
FLR-136-1.5 FLR-137-0.5	Vandal protective aerator with removal tool #LL-60K ▪ 1.5 gpm (5.7 L/min) ▪ 0.5 gpm (1.9 L/min)
FLR-138-0.5	Vandal protective laminar flow non-aerated spray outlet with removal tool #LL-60K ▪ 0.5 gpm (1.9 L/min)

Ordering replacement parts:

Call Symmons customer service at (800) 796-6667, (781) 848-2250 M-F 8:00 am - 7:00 pm EST or check our website at www.symmons.com for a list of Symmons distributors.