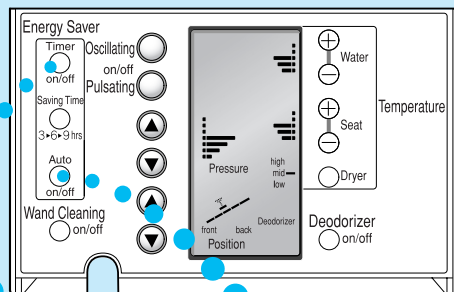


Amenities

See pages 14 -18 in the Instruction manual for details.

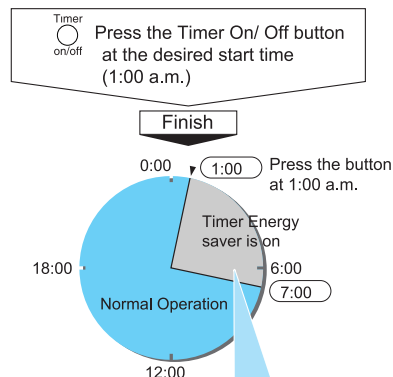


Timer Energy Saver

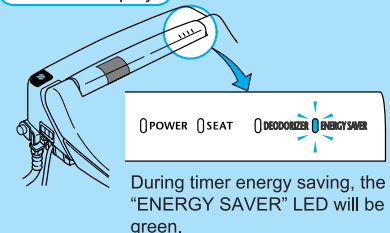
Once set, the seat heater shuts off at the preset time every day to save power.

(The power saving durations are 3, 6 and 9 hours.)

Example To save power for 6 hours.
(From 1:00 ~ 7:00 a.m.)



Main unit display

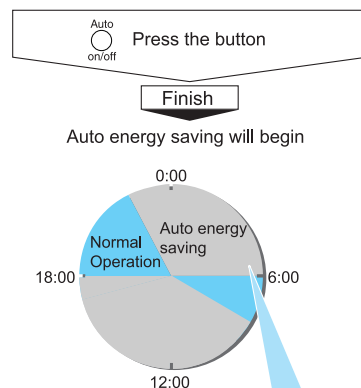


During timer energy saving, the "ENERGY SAVER" LED will be green.

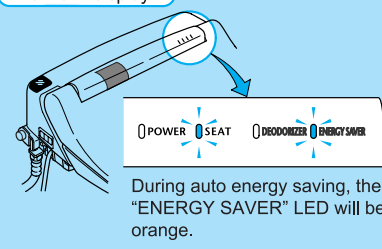
Saving Time
3 • 6 • 9 hrs
Push to modify the duration of the Energy Saving.

Auto Energy Saver

Hours in which the unit is infrequently used are memorized. During these times, the toilet seat temperature is lowered to save power.



Main unit display



During auto energy saving, the "ENERGY SAVER" LED will be orange.

TOTO®

Washlet® S300

SW553/SW554

How To Use

See pages 12 - 13 in the instruction manual for details.

Cleansing



To wash the bottom.



To wash the bottom with mild spray.

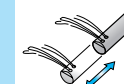


To wash the front.

Comfort Washes

Oscillating

The wand moves back and forth.



Pulsating

Varies the water pressure.



Adjusting the water pressure and cleaning position.



Stop

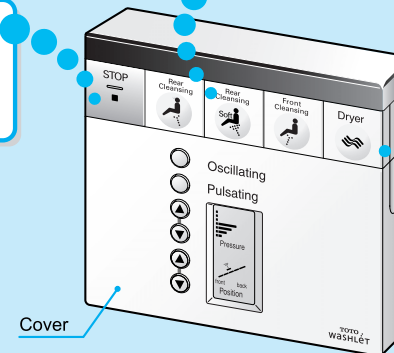


Stops the washing or drying.

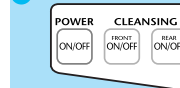
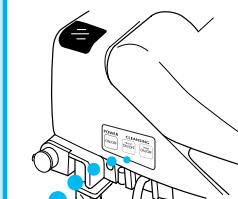
Dryer



Blows warm air to aid drying.



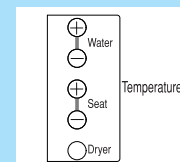
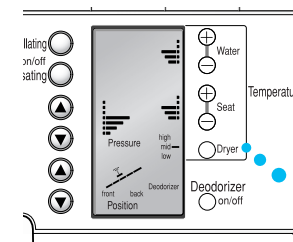
Main unit controls



Use in case of necessity.

Temperature Adjustment

Open the cover to operate



See page 14 of the instruction manual for details.

For your safety, be sure to inspect your S300 occasionally.

- Is the power plug abnormally hot?
- Is the power plug covered with dust?
- Is the outlet loose?
- Is your S300 operating differently than usual?

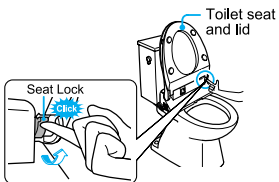
* In case anything is abnormal, contact TOTO USA to prevent a fire or an electrical shock.

Caring for your Washlet®

Toilet Seat and Lid

Removal

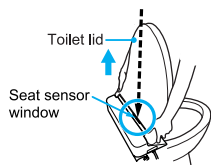
- 1 Open the seat and lid and then open the seat lock (grey) until you hear a "click".



- 2 Align the lid with the top of the seat sensor window (black).

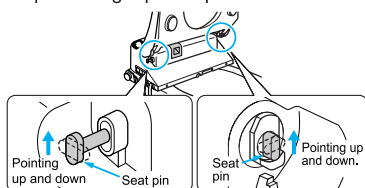
Pull straight up on both seat and lid

The toilet seat cord can only be pulled out about 2" (5 cm). (Pulling with excess force may damage the Washlet).



Attachment

- 1 Confirm that the toilet seat pins are facing up and down. If they are not pointing up and down, move the pins using a pair of pliers.



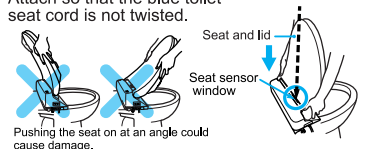
- 2 Confirm that the seat locks (Grey) are up.

If the seat lock is not up, the seat and lid can not be attached.



- 3 Align the seat and lid with the top of the seat sensor window (black) and push firmly onto the toilet seat pins.

Attach so that the blue toilet seat cord is not twisted.



- 4 Lower the seat locks (grey) until a click is heard.

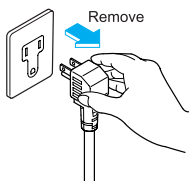
If the seat locks will not go down, the seat is not properly attached. Remove the seat and reattach it.

When removing the main unit

Warning

When removing the main unit for care or maintenance, unplug the power cord.

(Otherwise, an electrical shock may occur)



Main Unit

Removal

Hold the main unit removal button and pull forward.



Reattach

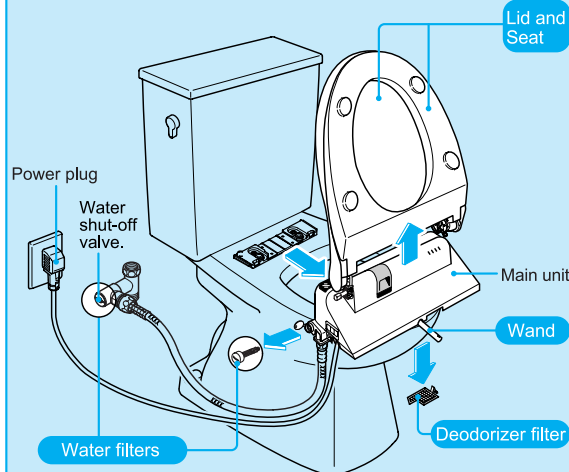


Important Notes

Each component can be disassembled for thorough cleaning.

Wet and wring out a soft cloth for wiping the lid, seat and wand.

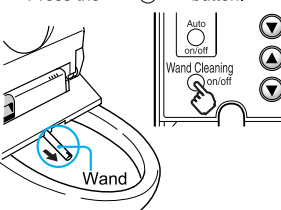
Use a small brush, such as a toothbrush, to clean the filters.



Wand

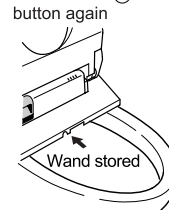
Extend the wand

Press the Wand Cleaning on/off button.



Retract the wand

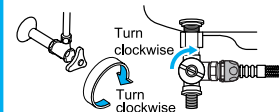
Press the button again



Water Filter

Removal

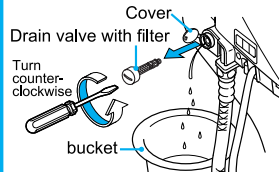
- 1 Close the shut off valve and the junction valve.



Caution

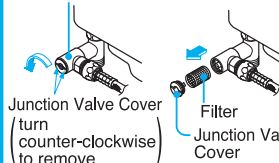
Do not remove the drain valve and filter with the water shut off valve open. (Water will spray out.)

- 2 Open the cover with a flat head screwdriver and remove the drain valve with filter.



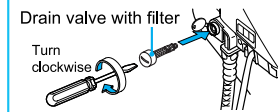
- 3 To access the junction valve filter, the junction valve cover must be removed. Use a large flathead screwdriver or coin and turn the valve cover counter-clockwise. Place a container underneath the junction valve. After removing the junction valve cover, gently pull the strainer out.

Junction Valve



Installation

- 1 Install the water drain valve and filter.

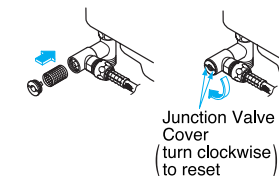


Caution

Tighten the drain valve securely. (If not properly installed and tightened, it may leak.)

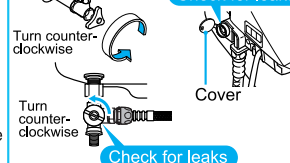
- 2 Insert the junction valve cover with filter.

Push the junction valve cover with filter into the junction valve and turn it clockwise. Be sure to tighten it securely.



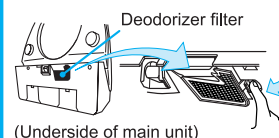
- 3 Open the water shut off valve and junction valve. Check for leaks and replace cover.

Check for leaks



Deodorizer Filter

Removal



Installation

