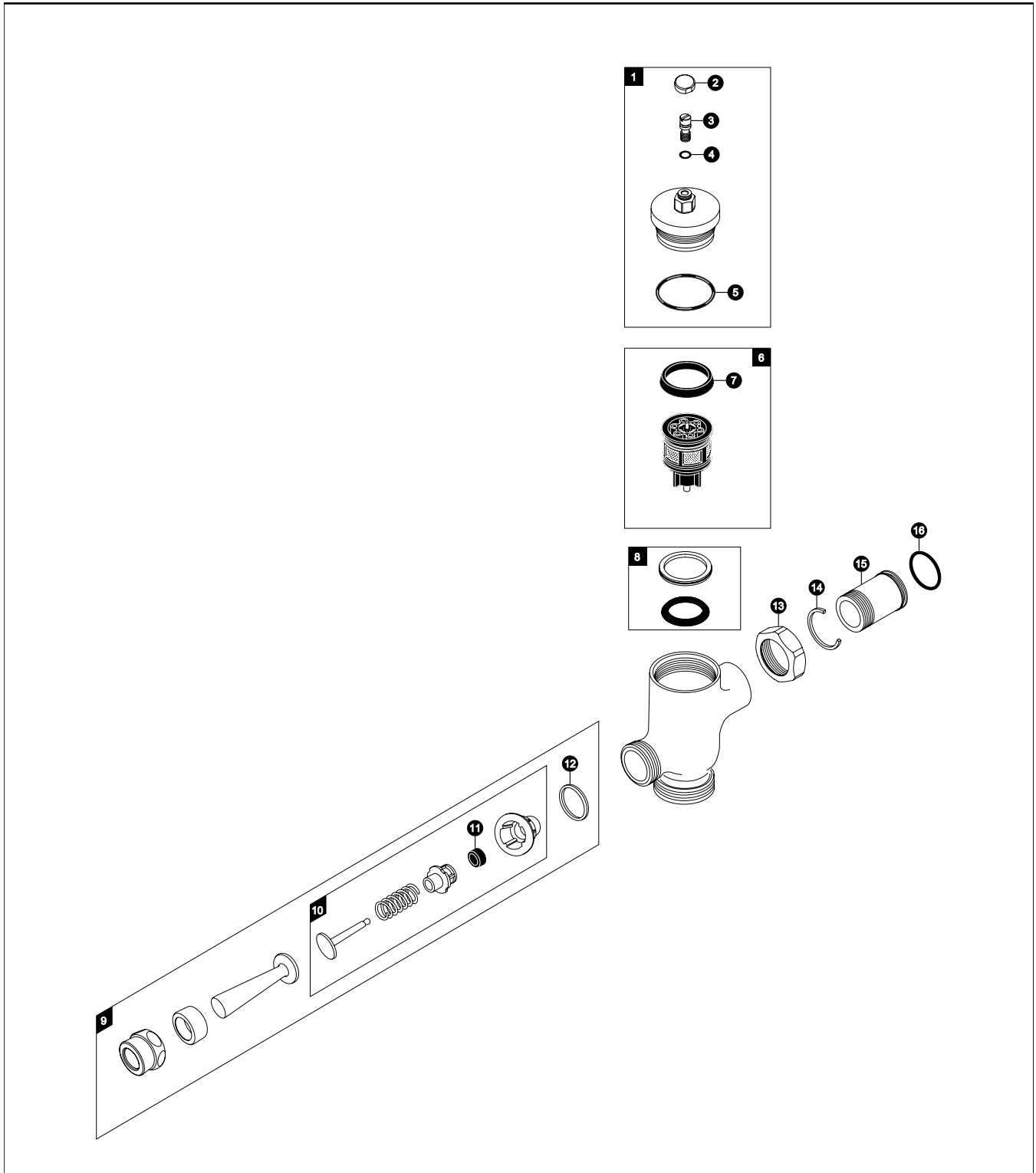


TMU1LN#CP Series

TMU1LN12#CP
TMU1LN22#CP
TMU1LN#CP

Manual Urinal Flush Valve, Exposed - 0.5 GPF Non-Hold Open



TMU1LN#CP Series

TMU1LN12#CP
 TMU1LN22#CP
 TMU1LN#CP

Manual Urinal Flush Valve, Exposed - 0.5 GPF Non-Hold Open

Item	Part	Description	Price	Item	Part	Description	Price
1	THU3027	Valve Cover Set					
2	TH305SV108	Screw Cap (MFV & Angle Stop)					
3	TH305SV110	Adjustment Screws (Toilet)(10 Pieces)					
4	TH305SV111	O-Rings (Cap Screw)(10 Pieces)					
5	TH305SV112	O-Rings (Valve Guide)(10 Pieces)					
6	TH323V102	Piston Valve Assembly					
7	TH305SV103	U-Packing (For Piston)(10 Pieces)					
8	TH321	Seal Washer Kit					
9	TH305SV1	Lever Assembly					
10	THY326	Push Button Assembly					
11	TH302RV100	Gaskets (U-Packing)(10 Pieces)					
12	TH305SV104	Fiber Washers (10 Pieces)					
13	TH305SV113	Nut					
14	TH305SV105	Locking Rings (10 Pieces)					
15	TH305SV114	Tail Piece					
16	TH305SV106	O-Rings (Tail Piece)(10 Pieces)					
Vacuum Breaker Sets							
	VB9CP-12	Exposed - Top Spud (3/4" Outlet)					
	VB9CP-22	Exposed - Top Spud (1-1/4" Outlet)					

Notes

For additional information, refer to the individual vacuum breaker parts sheets.

Product Number Explanations

Flush Valve

(T) Fitting
 (M) Manual
 (U) Urinal 1.0
 (1) Exposed
 (L) 0.5 Gpf
 (N) Neutral Rough-In
 (1) 3/4" Outlet
 (2) Top Spud
 (#CP) Chrome Finish

Flush Valve

(T) Fitting
 (M) Manual
 (U) Urinal 1.0
 (1) Exposed
 (L) 0.5 Gpf
 (N) Neutral Rough-In
 (2) 1-1/4" Outlet
 (2) Top Spud
 (#CP) Chrome Finish