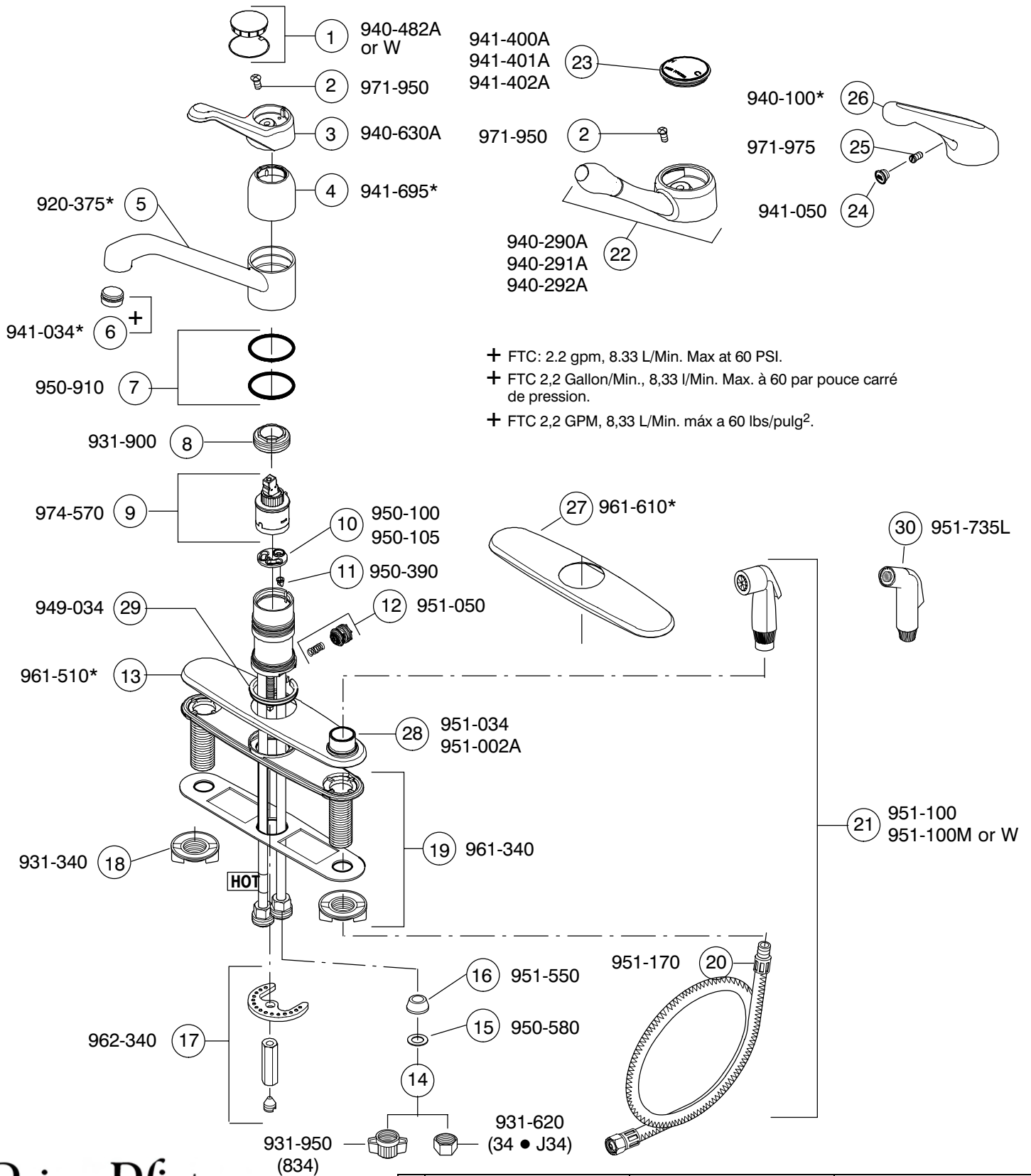


34 ● J34 ● 834



† FTC: 2.2 gpm, 8.33 L/Min. Max at 60 PSI.
 † FTC 2,2 Gallon/Min., 8,33 l/Min. Max. à 60 par pouce carré de pression.
 † FTC 2,2 GPM, 8,33 L/Min. máx a 60 lbs/pulg².

Pfister

Pfreshest Ideas in Pfaucets.
 13500 Paxton St., P.O. Box 4518,
 Pacoima, CA 91333-4518
 Phone 1-800-PFAUCET
 A BLACK & DECKER COMPANY

	<i>English</i>	<i>Français</i>	<i>Español</i>
*	Letter Designates finish	La lettre désigne le fini	La Letra Indica el Terminado
A	Polished Chrome	Chrome poli	Chrome Pulido
L	Satin Stainless Steel	Acier inoxydable satiné	Acero inoxidable satinado
M	Almond	Amande	Almendra
W	White	Blanc	Blanco