

# CST484CEMF(G)

CST484CEMF  
CT484CEF  
ST484M

CST484CEMFG  
CT484CEFG  
ST484M

Maris®

1.28 & 0.9 Gpf Toilet, Elongated,  
3D Tornado™, Universal Height,  
Trip Lever Type

Item	Part	Description
1	TCU484CR#01	Tank Lid with Velcro - Cotton
	TCU484CR#03	Tank Lid with Velcro - Bone
	TCU484CR#12	Tank Lid with Velcro - Sedona Beige
	TCU484CR#51	Tank Lid with Velcro - Ebony
2	TSU42A	Fill Valve Assembly - Dual Max - Voretto
3	THU356	Flush Valve Assembly
4	THU351#CP	Trip Lever Assembly - Polished Chrome
5	9BU092E	Tank to Bowl Gasket
6	THU651N	Top Mounting Seat Hardware
7	TSU04D	Tank Mounting Hardware Kit
8	9BU090	Seal Gasket
9	THU360	Seal Gasket (10 pieces)
10	THU234	Velcro Tape
11	THU291	Plastic Flange Rough In
12	THU352	Bowl Mounting Hardware
13	THU9024#01	Side Screw Cap (2 pieces) - Cotton
	THU9024#03	Side Screw Cap (2 pieces) - Bone
	THU9024#12	Side Screw Cap (2 pieces) - Sedona Beige
	THU9024#51	Side Screw Cap (2 pieces) - Ebony
14	0GU171	Installation Template
15	0GU070	Installation Instructions
16	0EU101	Top Lid Sticker - Cotton
	0EU101	Top Lid Sticker - Bone
	0EU101	Top Lid Sticker - Sedona Beige
	0EU101-1	Top Lid Sticker - Ebony
17	THU9090R	Washlet Adapter Hose Kit (required for Washlet installation)

**Note:**

## Product Number Explanations

### Two-Piece Toilet

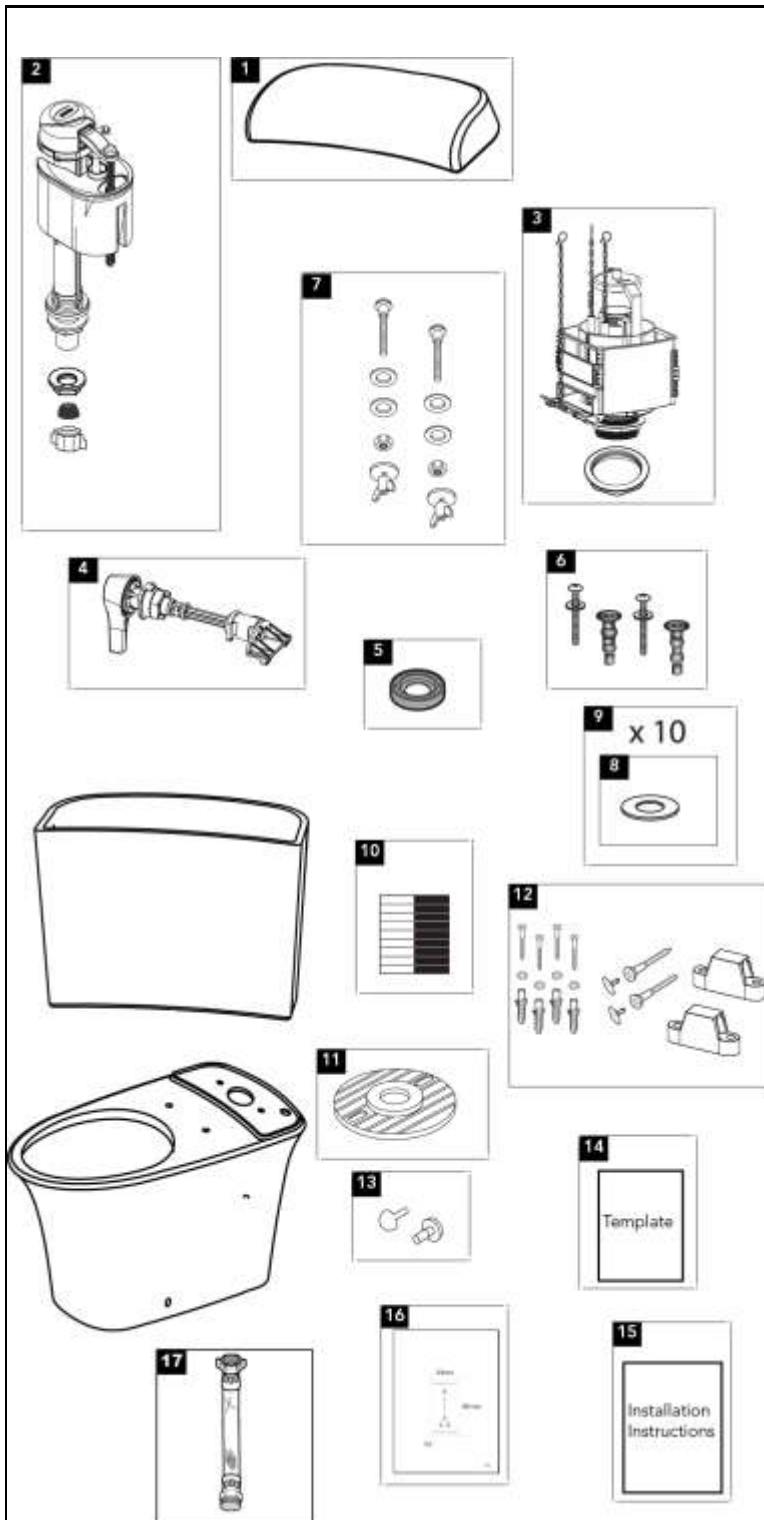
(CST) Gravity Type Toilet  
(484) Model  
(CE) 3D Tornado™  
(M) Dual Flush  
(F) Universal Height  
(G) CeFIONtect™

### Tank

(ST) Tank  
(484) Model  
(M) Dual Flush

### Bowl

(CT) Bowl  
(484) Model  
(CE) 3D Tornado™  
(F) Universal Height  
(G) CeFIONtect™



Actual Product may vary slightly from illustration.