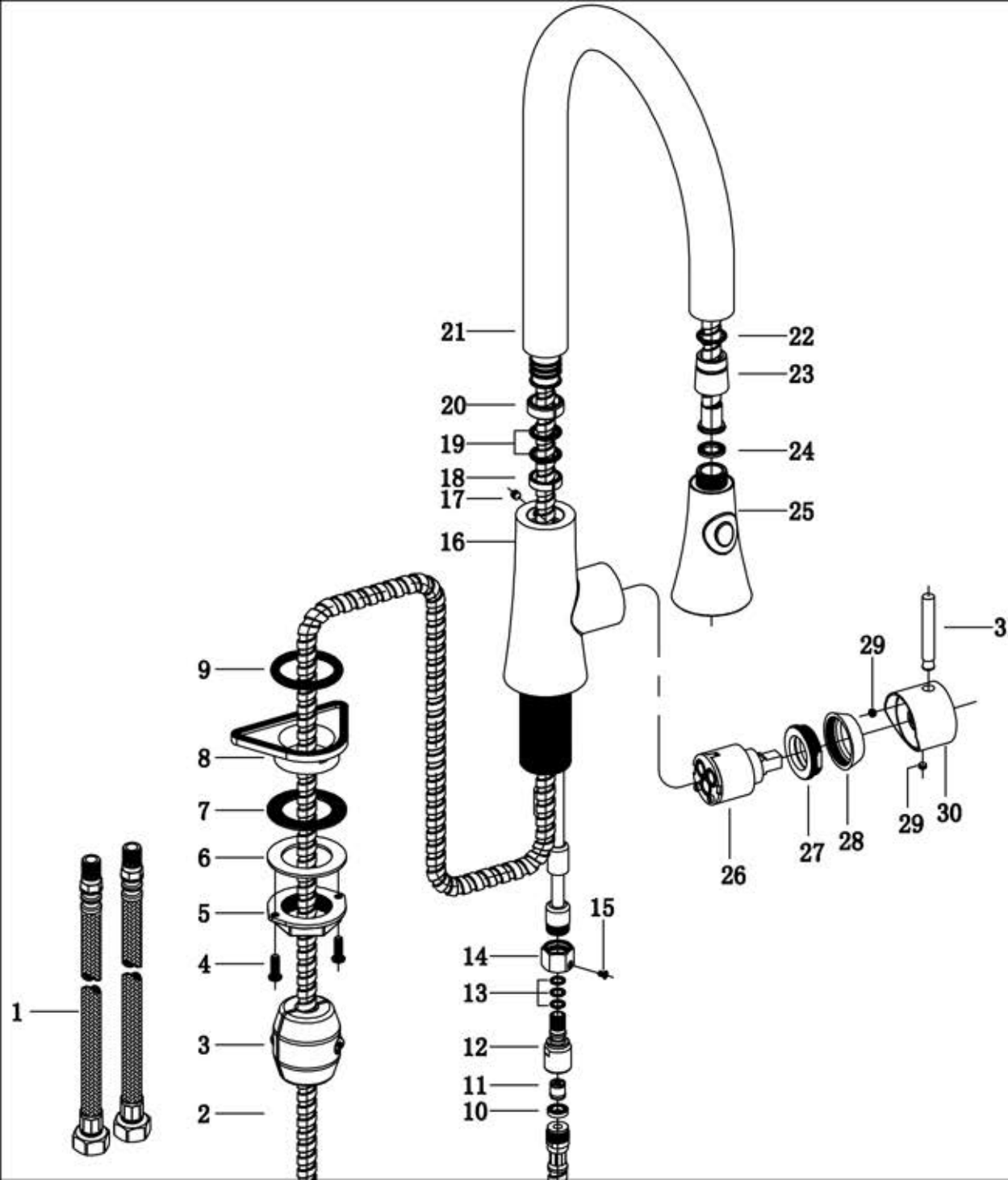


AB2034



31	V813	handle lever	1	CB	L55	304	brushed
30	V458	handle cover	1	M5		304	brushed
29	SCW-50040U-A	screw	2	M5	L4	304	
28	V459	fixed cover	1	M34*1		304	brushed
27	V460	screw	1	M37*1	M34*1	304	
26	KS-35LA-KEROX	cartridge	1	35#			ceramic
25	DLT005	shower head	1	G1/2		POM	brushed
24	GRS-190110220-R	rubber ring	1	19*11*2.2			rubber
23	V818	hose connector	1	G1/2		304	brushed
22	OR-200200	O ring	1	20*2		dingqing	black
21	GT2035-02	spout	1	20*1.8		304	brushed
20	V811	plastic sleeve	1	24.4		PA6	white
19	OR-213265	O ring	2	21.3*2.65			
18	V812	plastic sleeve	1	21.8		PA6	white
17	SCW-50060U-B	screw	1	M5	L6	304	
16	GT2035-01	body	1	M37*1		304	brushed
15	SCW-30050X-S	fixed screw	1	M3	L5	304	
14	V144	screw	1	M3		304	
13	OR-100150	rubber ring	3	10*1.5			
12	V143	connector	1	M15*1		304	
11	DW10/DN6	check valve	1	10			plastic
10	GRS-135080300-R	rubber ring	1	13.5*CB*3			rubber
9	OR-464420	rubber ring	1	16.4*4.2			rubber black
8	V814	plastic base	1	27.5			plastic white
7	GRS-530340200-R	rubber ring	1	23*CB4*2			rubber black
6	V125	gasket	1	23*CB4.3*1.5		304	
5	V122	screw nut	1	M34*1.5		304	
4	V657	screw	2	M5		304	
3	ZC-600G	weight ball	1	600g			
2	DLG-M1517500-1	shower hose	1	M15*1	L1750	304	
1	FHS-G1/2M10500-1	flexible hose	2	M10*1	L500	304	

NO	Parts models	Name of parts	QTY	Specifications	Material	Remarks
Series name		Drawing people		inspector		
Customer number		Factory number		GT2035	Date	2012-12-26
Product name		Stainless steel sink mixer		Editions	A	