

- CR-900C** **CR-900BN**
- CR-900ORB** **CR-900CJP**
- CR-900BNJP** **CR-900ORBJP**



Two Handle Roman Tub Faucet

Product Spec Sheet



FEATURES & BENEFITS

- Metal Lever Handles
- Ceramic Cartridges
- Min Flow Rate 4.0 GPM(15.1 LPM) at 60 PSI (ASME.A112.18.1)

APPROVALS:

Meets or Exceeds The Following:

- * ANSI/ASME A112.18.1
- * IAPMO/UPC

- CR-900C
Chrome Finish
- CR-900BN
Brushed Nickel Finish
- CR-900ORB
Oil Rubbed Bronze Finish
- CR-900CJP
Trim Kit For Roman Tub
Chrome Finish
- CR-900BNJP
Trim Kit For Roman Tub
Brushed Nickel Finish
- CR-900ORBJP
Trim Kit For Roman Tub
Oil Rubbed Bronze Finish



CALIFORNIA:
TEXAS:
NEW YORK:

TEL: 866-532-8306
TEL: 800-935-5456
TEL: 800-431-2082

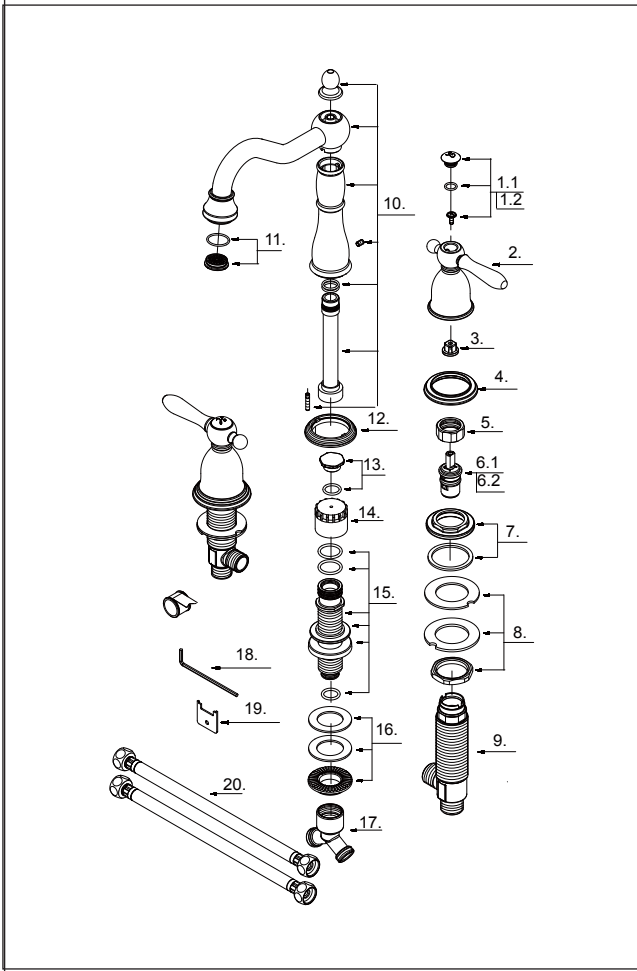
FAX: 866-532-8307
FAX: 800-683-4247
FAX: 800-640-2252

- CR-900C** **CR-900BN**
- CR-900ORB** **CR-900CJP**
- CR-900BNJP** **CR-900ORBJP**

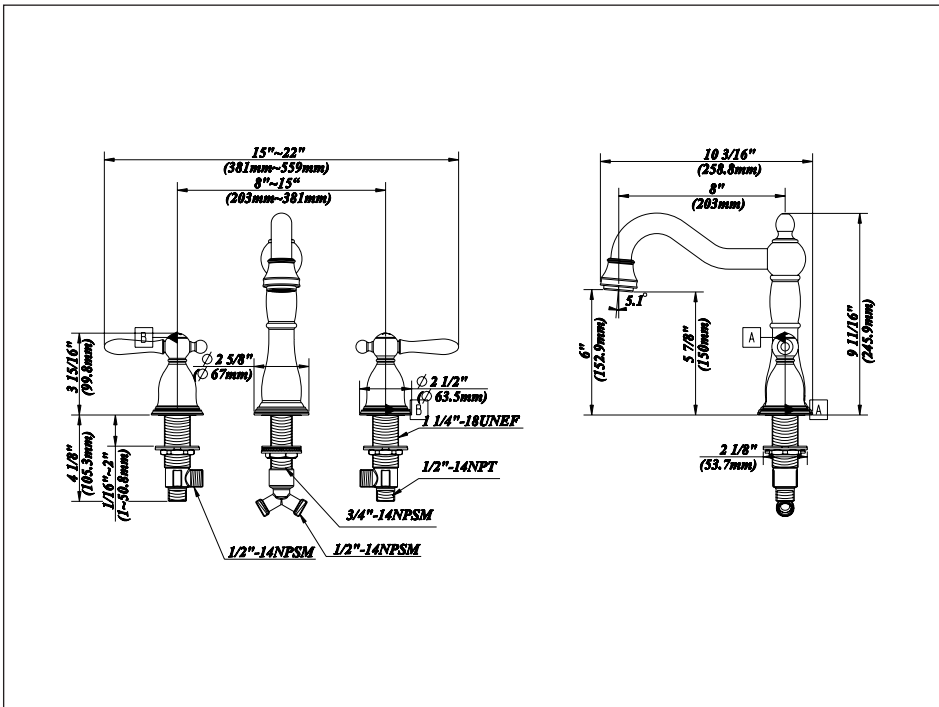


Two Handle Roman Tub Faucet

No.	Name	Material
1.1	Index Button-Cold	Brass
1.2	Index Button-Hot	Brass
2	Metal Handle	Zinc Alloy
3	Handle Adapter	Plastic
4	Handle Trim Ring	Zinc Alloy
5	Retainer Nut	Brass
6.1	Ceramic Disc Cartridge-Cold	Ceramic & Brass
6.2	Ceramic Disc Cartridge-Hot	Ceramic & Brass
7	Lock Nut	Brass & Rubber
8	Mounting Hardware	Brass & Stainless Steel
9	Handle Valve Body	Brass
10	Spout Assembly	Brass
11	Flow Straightener	Plastic
12	Spout Trim Ring	Zinc Alloy
13	Spout Plug	Brass
14	Spout Rough In Cap	Plastic
15	Spout Body	Brass
16	Mounting Hardware	Brass
17	"Y" Adaptor	Brass
18	Hex Wrench (H4 * 20 mm L * 70 mm L)	Stainless Steel
19	Flow Straightener Wrench	Stainless Steel
20	Supply Hose	Stainless Steel



Product Spec Sheet



APPROVALS:
 Meets or Exceeds The Following:
 * ANSI/ASME A112.18.1
 * IAPMO/UPC

CALIFORNIA: TEL: 866-532-8306 FAX: 866-532-8307
TEXAS: TEL: 800-935-5456 FAX: 800-683-4247
NEW YORK: TEL: 800-431-2082 FAX: 800-640-2252

Visit Our Web Site : www.matco-norca.com