

- PA-400C**       **PA-400BN**  
 **PA-400ORB**

## **4" Two Handle Lavatory Faucet**



# Product Spec Sheet

### **FEATURES & BENEFITS**

- This Product Contains Less Than 0.25% Weighted Average Lead Content On Wetted Surfaces
- Metal Lever Handles
- Ceramic Cartridges
- Brass Pop-up
- Max Flow Rate 1.5 GPM(5.7 LPM) at 60 PSI (ASME.A112.18.1)

PA-400C  
Chrome Finish

PA-400BN  
Brushed Nickel Finish

PA-400ORB  
Oil Rubbed Bronze Finish

### **APPROVALS:**

**Meets or Exceeds The Following:**

- \* ANSI/ASME A112.18.1
- \* ANSI/NSF 61 – Sec. 9
- \* IAPMO/UPC
- \* CA AB1953



**CALIFORNIA:**  
**TEXAS:**  
**NEW YORK:**

**TEL: 866-532-8306**  
**TEL: 800-935-5456**  
**TEL: 800-431-2082**

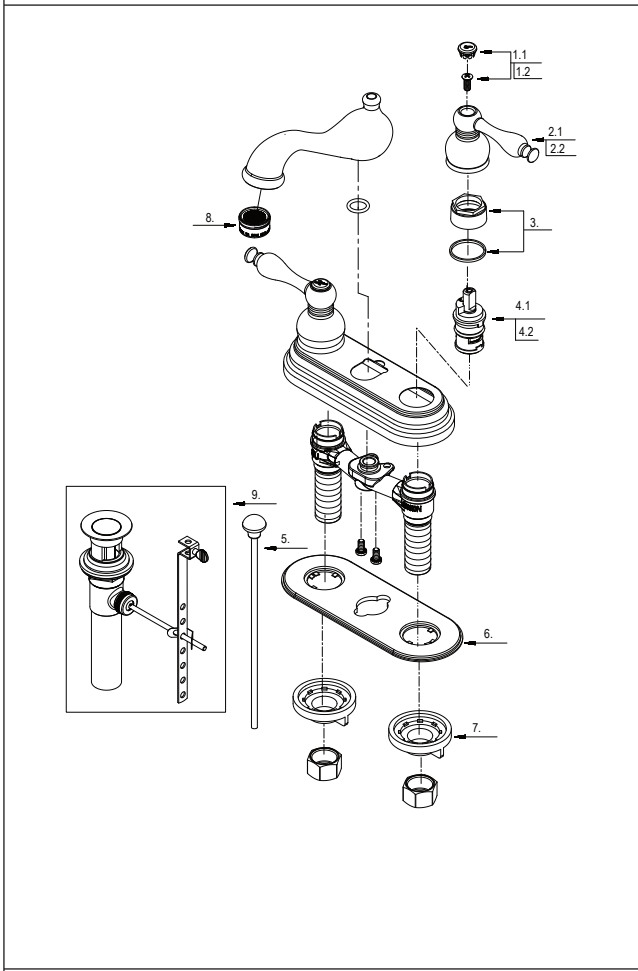
**FAX: 866-532-8307**  
**FAX: 800-683-4247**  
**FAX: 800-640-2252**

**PA-400C**    **PA-400BN**  
 **PA-400RB**

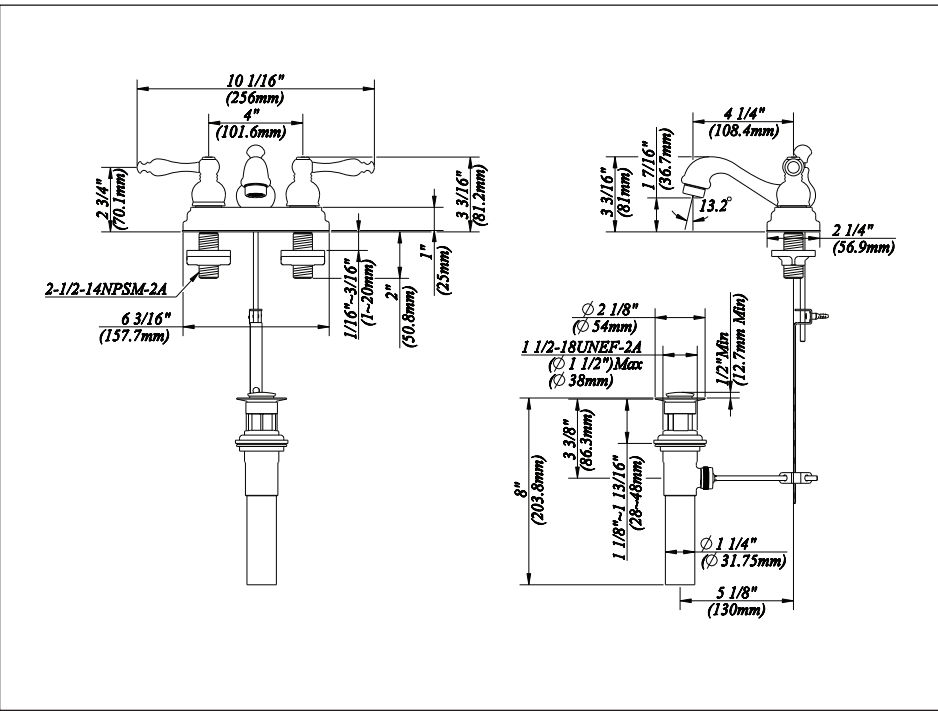


# 4" Two Handle Lavatory Faucet

No.	Name	Material
1.1	Index Button-Cold	Brass
1.2	Index Button-Hot	Brass
2.1	Metal Handle Assembly-Cold	Zinc Alloy
2.2	Metal Handle Assembly-Hot	Zinc Alloy
3	Retainer Nut & Washer	Brass & Rubber
4.1	Ceramic Disc Cartridge-Cold	Brass & Ceramic
4.2	Ceramic Disc Cartridge-Hot	Brass & Ceramic
5	Lift Rod	Brass
6	Putty Plate	Plastic
7	Lock Nut Set	Plastic
8	Aerator	Plastic & Brass
9	Pop-up Assembly	Brass



**Product Spec Sheet**



**APPROVALS:**  
**Meets or Exceeds The Following:**

- \* ANSI/ASME A112.18.1
- \* ANSI/NSF 61 – Sec. 9
- \* IAPMO/UPC
- \* CA AB1953

**CALIFORNIA:** TEL: 866-532-8306 FAX: 866-532-8307  
**TEXAS:** TEL: 800-935-5456 FAX: 800-683-4247  
**NEW YORK:** TEL: 800-431-2082 FAX: 800-640-2252

Visit Our Web Site : [www.matco-norca.com](http://www.matco-norca.com)