

PD-150C

PD-150SS



Single Handle Pulldown Kitchen Faucet

Product Spec Sheet



FEATURES & BENEFITS

- This Product Contains Less Than 0.25% Weighted Average Lead Content On Wetted Surfaces
- Metal Lever Handle
- Optional Deck Plate Included
- Ceramic Cartridge
- Max Flow Rate 2.2 GPM(8.4 LPM) at 60 PSI (ASME.A112.18.1)

PD-150C
Chrome Finish

PD-150SS
Stainless Steel Finish

APPROVALS:

Meets or Exceeds The Following:

- * ANSI/ASME A112.18.1
- * ANSI/NSF 61 – Sec. 9
- * IAPMO/UPC
- * CA AB1953



CALIFORNIA:
TEXAS:
NEW YORK:

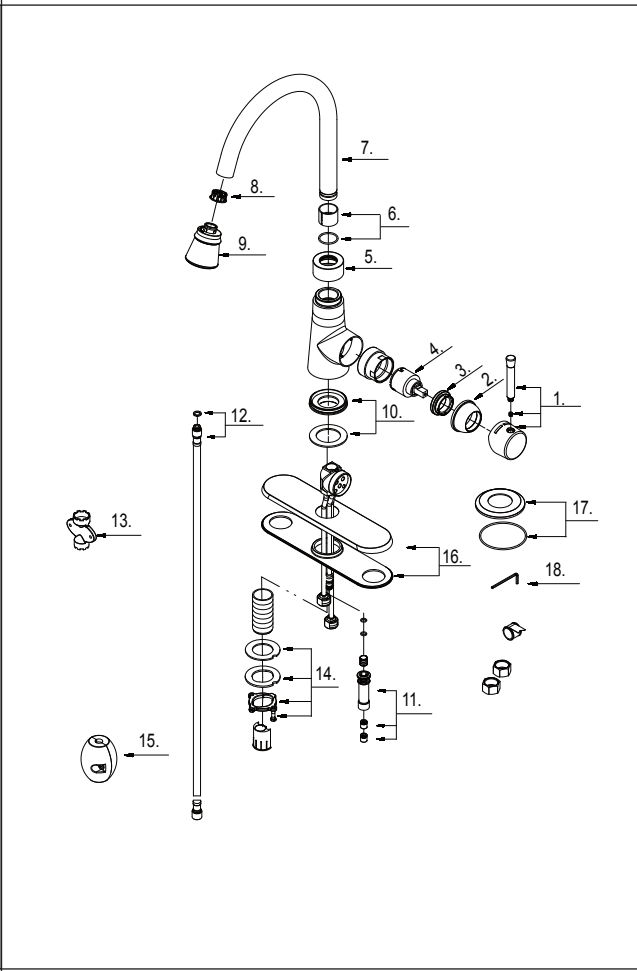
TEL: 866-532-8306
TEL: 800-935-5456
TEL: 800-431-2082

FAX: 866-532-8307
FAX: 800-683-4247
FAX: 800-640-2252

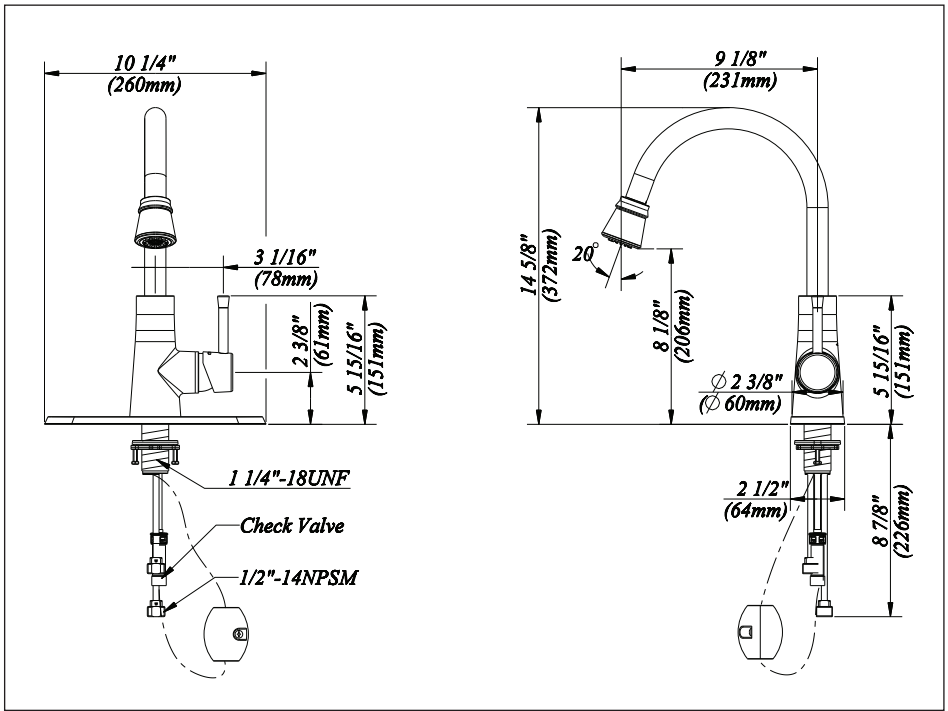
Visit Our Web Site : www.matco-norca.com

Single Handle Pulldown Kitchen Faucet

No.	Name	Material
1	Metal Handle Assembly	Zinc Alloy & Brass
2	Trim Cap	Brass
3	Locking Nut	Brass
4	Ceramic Disc Cartridge	Ceramic & Brass
5	Aerator Wrech	Plastic
6	Spout Seal Kit	Plastic
7	Spout Assembly	Brass
8	Hose Guide	Plastic
9	Spray Head	Plastic
10	Spout Trim Ring	Brass
11	Hose Adaptor Assembly	Plastic
12	Supply Hose	Stainless Steel
13	Aerator Wrech	Plastic
14	Mounting Hardware Assembly	Plastic & Brass
15	Weight	Plastic
16	Cover Plate & Putty Plate	Plastic & Brass
17	Base Trim Ring	Brass
18	Hex Wrench	Stainless Steel



Product Spec Sheet



APPROVALS:
Meets or Exceeds The Following:

- * ANSI/ASME A112.18.1
- * ANSI/NSF 61 – Sec. 9
- * IAPMO/UPC
- * CA AB1953

CALIFORNIA: TEL: 866-532-8306 FAX: 866-532-8307
TEXAS: TEL: 800-935-5456 FAX: 800-683-4247
NEW YORK: TEL: 800-431-2082 FAX: 800-640-2252