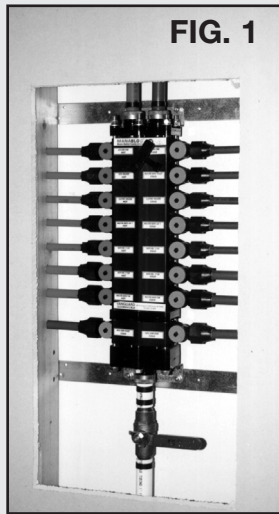
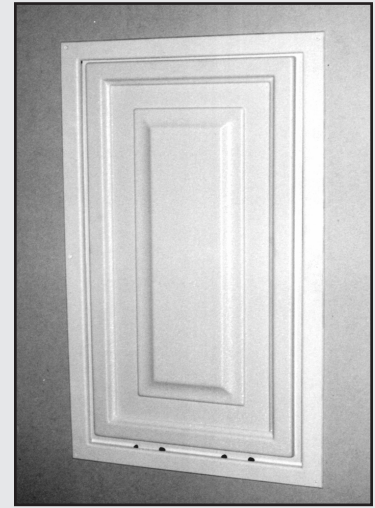
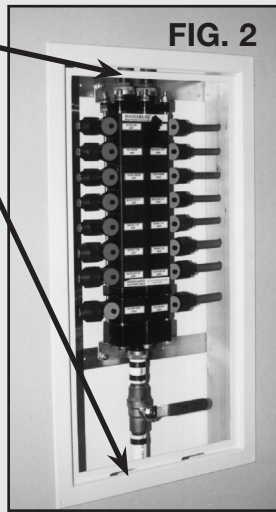


Product Instructions

MANABLOC[®] Access Panel Installation



• Panel
insertion
slots



The MANABLOC access panel is ideal for use with many plumbing applications like the MANABLOC[®] Manifold control unit or easy access to tub and shower valves, fire sprinkler valves or radiant heating manifolds.

The MANABLOC access panel access door installs in minutes. Attractive center panel removes to ensure full access. MANABLOC access panel is designed to fit between 16" on center framing.

Assembly instructions:

1. Use model # and chart below to determine proper size cut out.
2. At desired location, cut and remove section of dry wall (Fig. 1).
3. With panel removed, place frame into opening with small slots at bottom and frame resting on bottom of opening.
4. Lift frame up 1/4" and use provided hardware to secure frame to studs being careful not to overtighten (Fig. 2).
5. Insert top edge of removable panel into the upper frame slot, then while pushing the panel in, lower into bottom slots of frame. (Reverse sequence for removal.)

NOTE: If other than 16" on-center framing, appropriate anchors will be needed.

Stock Code	Old Part No.	Dimensions	Cut out	Outside
50718	(MPD-18)	14" x 18"	14-3/8" x 19-3/4"	16-1/2" x 21-1/4"
50726	(MPD-26)	14" x 26"	14-3/8" x 27-3/4"	16-1/2" x 29-1/4"
50730	(MPD-30)	14" x 30"	14-3/8" x 31-3/4"	16-1/2" x 33-1/4"
50739	(MPD-39)	14" x 39"	14-3/8" x 40-3/4"	16-1/2" x 42-1/4"

Viega... The global leader of plumbing and heating systems.

301 N. Main, 9th Floor • Wichita, KS 67202 • Ph: 800-976-9819 • Fax: 800-976-9817 • E-Mail: service@viega.com • www.viega.com