



SERVICE PARTS LIST

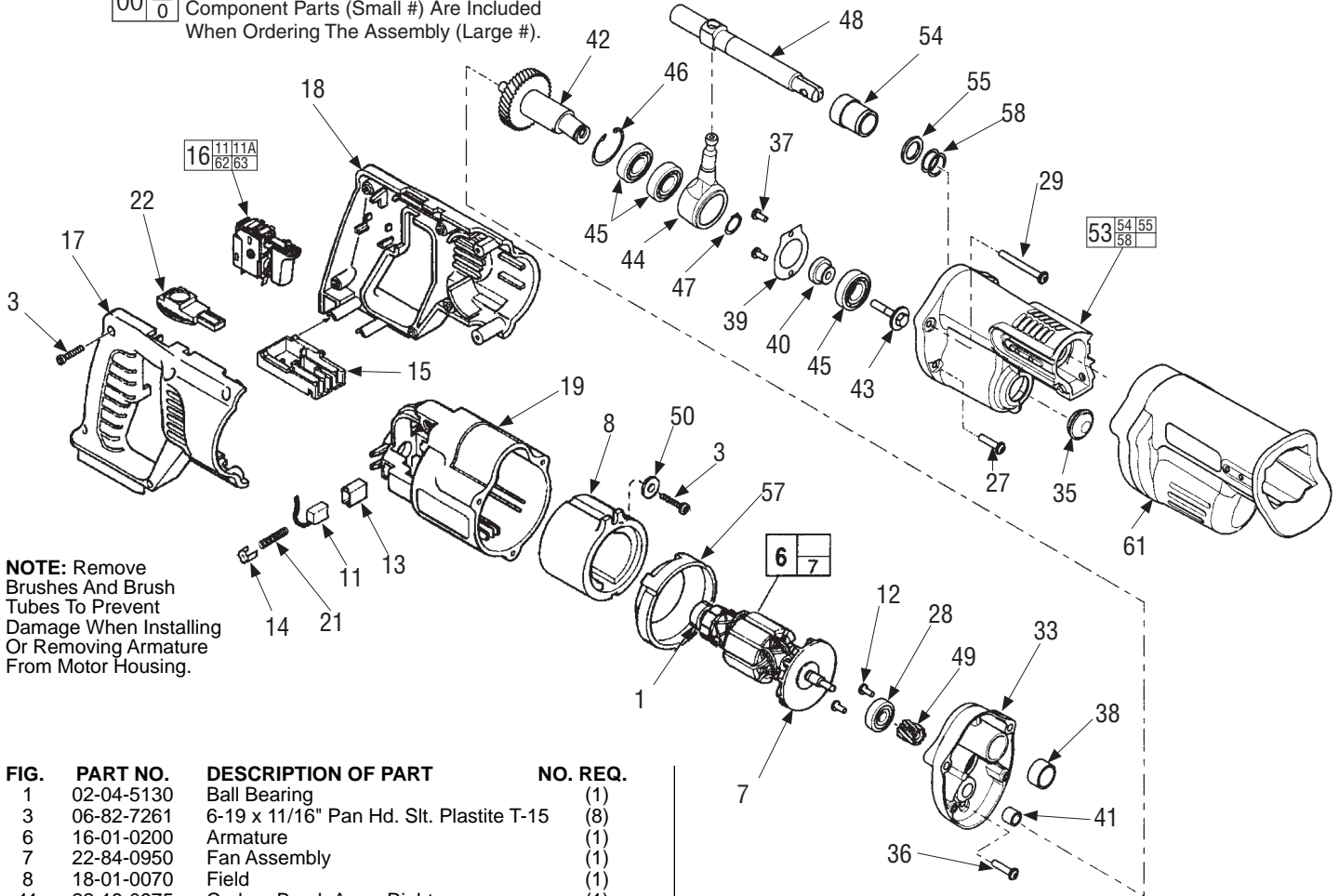
BULLETIN NO.
54-40-7520

SPECIFY CATALOG NO. AND SERIAL NO. WHEN ORDERING PARTS			REVISED BULLETIN	DATE
OEM - EXTRACTOR				June 2006
CAT. NO.	XTUSPROC2 USA	STARTING SERIAL NO.	WIRING INSTRUCTION	
XTPROC2 CANADA		CM203000	58-01-0790	

EXAMPLE:

00	0
----	---

 Component Parts (Small #) Are Included When Ordering The Assembly (Large #).



NOTE: Remove Brushes And Brush Tubes To Prevent Damage When Installing Or Removing Armature From Motor Housing.

FIG.	PART NO.	DESCRIPTION OF PART	NO. REQ.
1	02-04-5130	Ball Bearing	(1)
3	06-82-7261	6-19 x 11/16" Pan Hd. Slit. Plastite T-15	(8)
6	16-01-0200	Armature	(1)
7	22-84-0950	Fan Assembly	(1)
8	18-01-0070	Field	(1)
11	22-18-0975	Carbon Brush Assy.-Right	(1)
11A	22-18-0970	Carbon Brush Assy.-Left (Not Shown)	(1)
12	06-82-7253	8-32 x 3/8" Pan Hd. Taptite T-20	(2)
13	22-20-0860	Brush Tube	(2)
14	22-32-0400	Brush Spring Clip	(2)
15	22-56-0230	Connector Block	(1)
16	23-66-2352	Switch Assembly	(1)
17	31-44-0760	Handle Half-Right	(1)
18	31-44-0765	Handle Half-Left	(1)
19	31-50-0964	Motor Housing	(1)
21	40-50-8840	Brush Spring	(2)
22	45-24-0201	Lock Off Slide	(1)
27	06-82-5346	8-32 x 3/4" Pan Hd. Taptite T-20	(2)
28	02-04-0915	Ball Bearing	(1)
29	05-88-0302	K50 x 60mm Washer Hd. PT T-20	(2)
33	28-28-1000	Diaphragm	(1)
35	42-52-0380	Bearing Cap	(1)
36	05-88-8307	K50 x 22mm Pan Hd. PT T-20	(1)
37	06-82-7253	8-32 x 3/8" Pan Hd. Slit. Taptite T-20	(2)
38	42-24-0620	Rear Spindle Bearing	(1)
39	44-86-0055	Bearing Retainer	(1)
40	45-36-1440	Spacer	(1)
41	02-50-2150	Needle Bearing	(1)
42	36-92-1069	Wobble Shaft Assembly	(1)
43	06-75-0285	1/4-28 Washer Head Screw	(1)
44	30-72-0085	Wobble Plate	(1)
45	02-04-1510	Ball Bearing	(3)
46	34-80-2600	Internal Retaining Ring	(1)
47	34-60-1315	Retaining Ring	(1)
48	38-50-0675	Reciprocating Spindle	(1)
49	32-60-2800	Pinion	(1)
50	45-88-0603	Washer Lock Plate	(1)
★ 53	28-14-0997	Gear Case	(1)
★ 54	-----	Front Spindle Bearing	(1)
★ 55	-----	Felt Seal	(2)
57	31-05-0080	Baffle	(1)

FIG.	PART NO.	DESCRIPTION OF PART	NO. REQ.
★ 58	-----	Washer	(2)
61	45-12-0909	Gear Case Insulator	(1)
62	23-94-5890	Leadwire Assy.-Black (Not Shown)	(1)
63	23-94-5895	Leadwire Assy.-White (Not Shown)	(1)

FIG. LUBRICATION

- 53 Place 1/2 oz. (12 gm) of type "Y" grease, No. 49-08-5270, in gearing cavity near diaphragm.
- 53 Place 2-1/2 oz. (64 gm) of type "L" grease, No. 49-08-4175, in cavity in front of bearing plate.

FIG. NOTES:

- 1 Seal side faces commutator.
- 33,38 Press rear spindle bearing flush to -.030 from front exterior face in diaphragm boss.
- 33,41 Needle bearing is to be pressed from the open end flush to -.015 to face of bearing boss of diaphragm.
- 43 Torque to 80 in./lbs. to 120 in./ lbs.
- 45,46 Retaining ring is to be installed with the beveled side away from the bearing.
- 53,54 Press front spindle bearing flush to .015 below exterior surface of gear case.