



PIPE TOOLS & VISES  
SINCE 1896

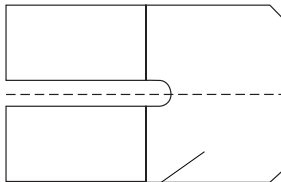
## Instructions for Using PL1438 1 1/2" & PL1750 2" PVC Shell Cutters with Reed Hole Saw Adapter on the DM2000

Hole Saw Spacer (#113 "O" Ring .56"ID x .75"OD x 3/32)  
installed between saw and arbor

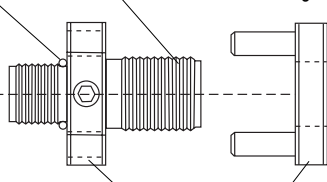
This end screws into the threaded end  
of the machine boring bar.

### Note:

1. Do not use pilot when drilling PVC pipe.
2. Do not overfeed shell cutters into PVC pipe.
3. For better wear, use tapping compound (#98425) on the cutting tips and the outside of the shell cutter.



PVC Shell Cutter - Screw onto arbor body to the  
o-ring and line up pin holes for the driver pins.



**Arbor Body**

**Driver**