

**Concealed Mount Faucet  
with Wrist Blade Handles  
Models LK412 and LK412BH6**



**SPECIFICATIONS**

**GENERAL**

**LK412** Concealed undermount dual handle gooseneck faucet with AE19 2.2 GPM vandal-resistant anti-hose aerator, BH4 4" (102mm) wrist blade handles, 11-1/4" (286mm) high adjustable rigid or swing gooseneck spout. 5-3/8" (137mm) from center of base to spout outlet. 8" (203mm) center to center inlets with 1/2" (13mm) coupling nuts. Ship. Wt. 6 lbs.

**LK412BH6** Same as LK412 except with BH6 6" (152mm) wrist blade handles. Ship. Wt. 6 lbs.

**OPTIONAL ACCESSORIES**

**AE13** Aerator. 2.2 GPM, Ship. Wt. 1/4 lb.

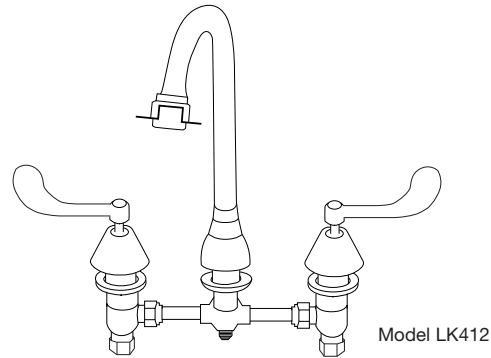


These faucets are ADA compliant.

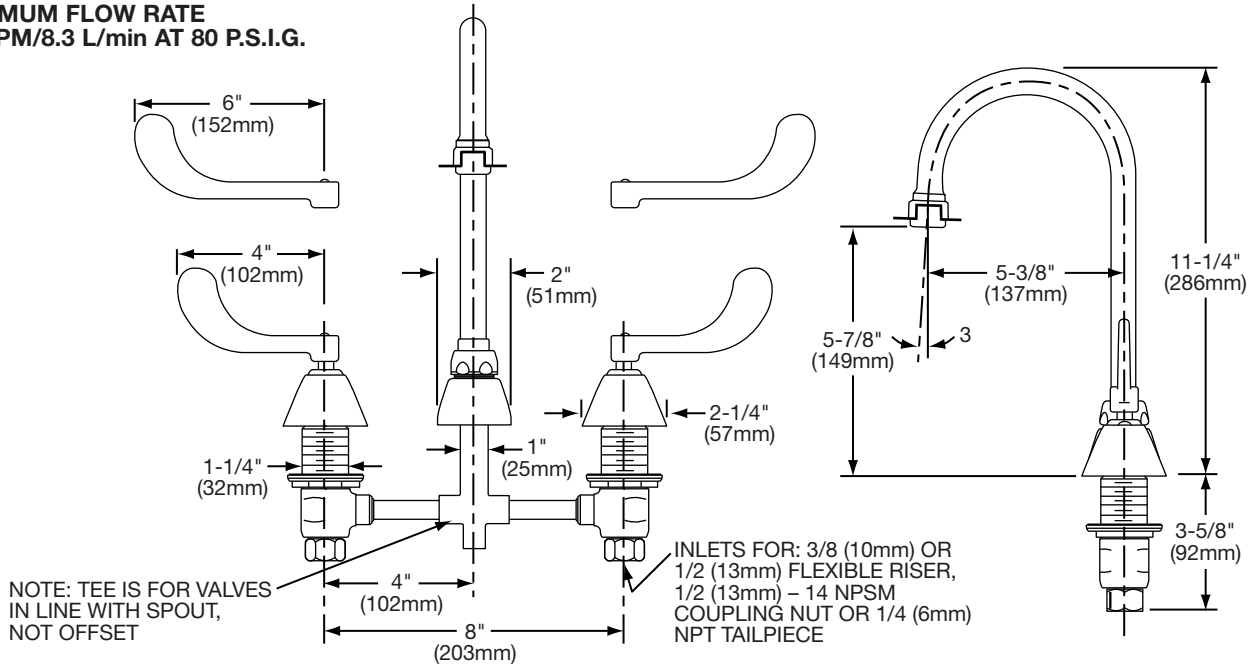


These faucets are classified by Underwriters Laboratories Inc. to **ANSI/NSF61** for residential use.

**MAXIMUM FLOW RATE  
2.2 GPM/8.3 L/min AT 80 P.S.I.G.**



Model LK412



**ELKAY FAUCET/WATER DISPENSERS LIMITED WARRANTY**

Elkay warrants its faucet and water dispensers to be free of defects in workmanship and material for a period of one year from the date of purchase. Replacement parts are available from Elkay for a nominal charge. Upon return of a defective part to Elkay during the warranty period with written notice of the claimed defect, Elkay will refund the replacement charge.

**WASTE FITTINGS AND ACCESSORIES ARE NOT WARRANTED; OTHER WARRANTY CONDITIONS:**

Our warranty does not cover product failure caused by abusive treatment, misuse, or damage due to handling or faulty installations. This warranty is extended only to the original consumer purchaser of the product. This warranty does not cover shipping costs, labor costs, or any other charges for such items as installation or replacement of the sink, diagnosis or replacement of any faucet or component part, or any other expense or loss.

ALL INCIDENTAL OR CONSEQUENTIAL DAMAGES ARE SPECIFICALLY EXCLUDED. NO ADDITIONAL WARRANTIES, EXPRESS OR IMPLIED, ARE GIVEN. ANY IMPLIED WARRANTY, INCLUDING ONE OF MERCHANTABILITY OR FITNESS FOR A PARTICULAR PURPOSE, IS LIMITED TO THE DURATION OF THIS WRITTEN WARRANTY.

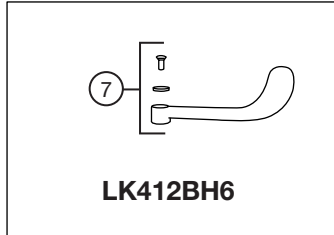
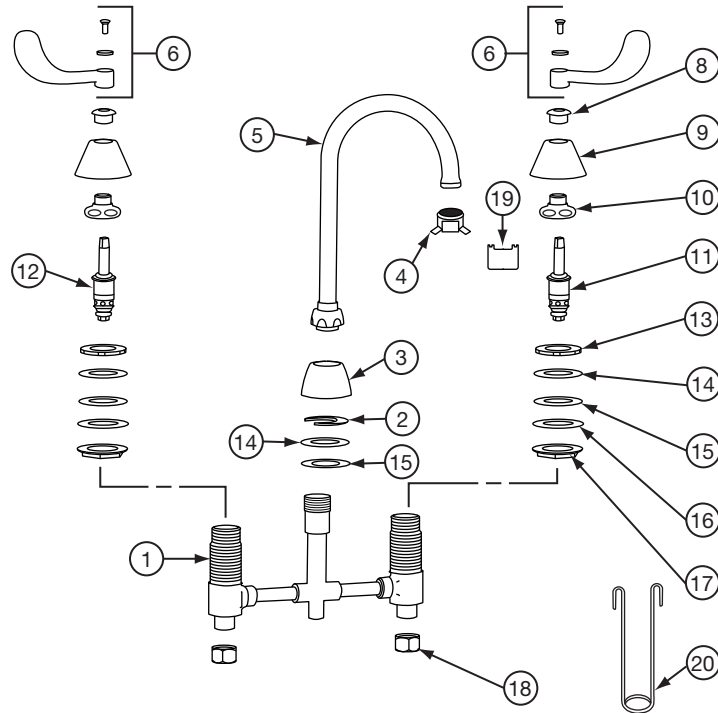
Some states do not allow the exclusion or limitation of incidental or consequential damages or limitations on how long an implied warranty lasts, so the above limitations or exclusions may not apply to you.

This warranty gives you specific legal rights, and you may also have other rights which vary from state to state.

**TO OBTAIN SERVICE UNDER WARRANTY**

1. Write to: Elkay  
Attention: Consumer Service  
2222 Camden Court  
Oak Brook, Illinois 60523
2. Include a letter containing the following information:
  - a. Date of purchase and installation
  - b. Description of nature of defect
  - c. Model number or description of model and/or component part if possible.

**PARTS LIST**



ITEM NUMBER	NUMBER REQUIRED	PART NUMBER	PART DESCRIPTION
1	1	NA	Valve Body
2	1	72002012	C Washer
3	1	72001351	Spout Base Escutcheon
4	1	AE19	Spout End with Vandal-Resistant Key
5	1	SPGN2A	Spout
6	1	BH4	4" Wrist Blade Assembly (Pair)
7	1	BH6	6" Wrist Blade Assembly (Pair)
8	2	72001332	Escutcheon Nut
9	2	72001333	Escutcheon
10	2	72001357	Cap Nut
11	1	72001317	RH Cartridge
12	1	72001331	LH Cartridge
13	2	72001334	Locknut
14	3	72001335	Brass Washer
15	3	72001336	Rubber Washer
16	2	72001451	Steel Washer
17	2	72001338	Locknut
18	2	72000573	Coupling Nut
19	1	72002000	Vandal-Resistant Key
20	1	72002025	Hanger