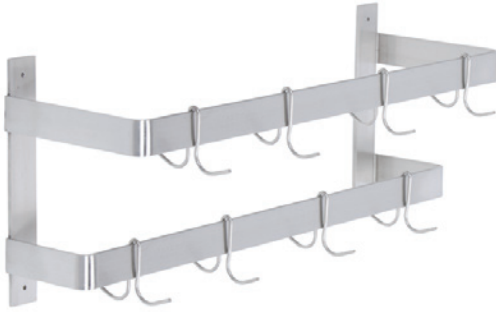


Item No.:	_____	Qty.:	_____
Model No.:	_____		
Project No.:	_____		

Standard Series Pot Rack

Standard Double Line Wall Mount Pot Rack



24"

- DLW-48X
- DLW-60X
- DLW-72X

Features

- 18 Gauge, 300 series stainless steel
- Includes 2 stainless steel pot hooks per foot
- Welded construction for consistent metal gauge thickness throughout
- Does not include mounting hardware

Options

- Pot Hook Upgrades
- Additional Pot Hooks

Materials

- **Shelf:** 18 Gauge, 300 series stainless steel
- **Hooks:** Stainless steel

Flyer Product



AUTOQUOTES



In keeping with our policy of continuing product improvement, Elkay SSP reserves the right to change product specifications without notice.

This specification describes an Elkay SSP product with design, quality and functional benefits to the user. When making a comparison of other producers' offerings, be certain these features are not overlooked.

Elkay SSP
421 N. Freya St.
Spokane, WA 99205
Phone: 800-726-0553 Fax: 509-535-1493

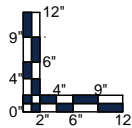
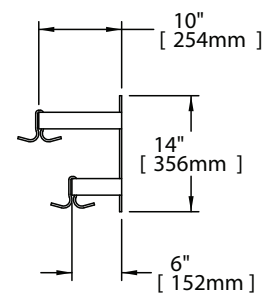
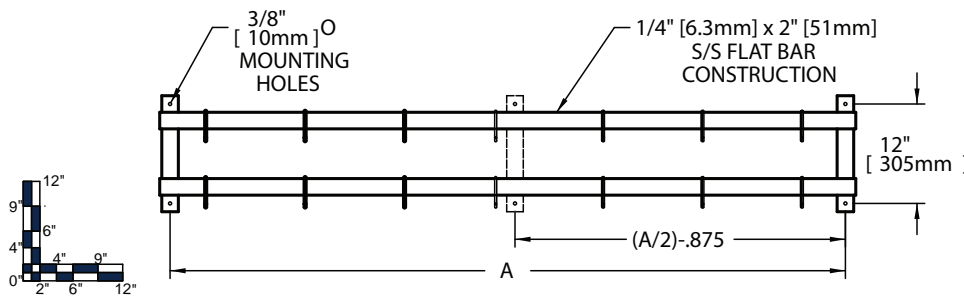
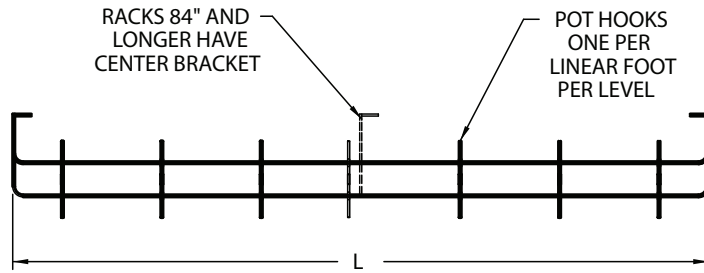
Website: www.sspinc.net
Email: sspsales@elkay.com
©2011 Elkay

WMS-DLW05OCT2011

Page 1 of 2



Item No.: _____ Qty.: _____
 Model No.: _____
 Project No.: _____



Double Line Pot Rack							
Model	Overall Length L		Overall Width W		Weight		Pot Hooks
	in.	mm	in.	mm	lbs.	kg	
	DLW - 48 X	48	1219	6	152	14	
DLW - 60 X	60	1524	6	152	22	10	10
DLW - 72 X	72	1829	6	152	30	14	12

