

Swash 300

OWNER'S MANUAL

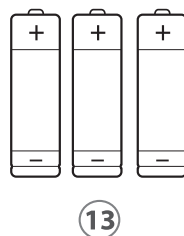
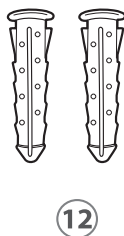
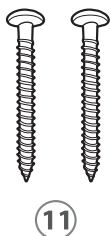
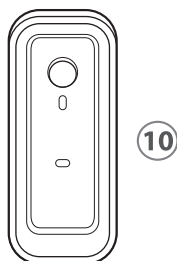
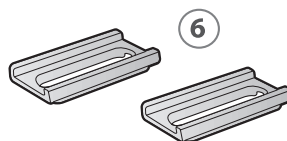
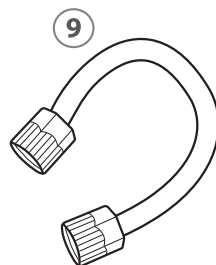
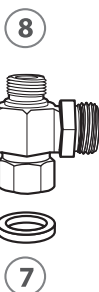
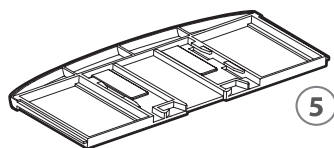
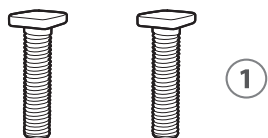


Swash 300

INSTALLATION

Installation Parts

- 1. 2 ea Mounting Bolt
- 2. 2 ea Rubber Cone Washer
- 3. 2 ea Flat Washer
- 4. 2 ea Barrel Nut
- 5. Mounting Plate
- 6. 2 ea Adjustable Bracket
- 7. Rubber T-Valve Washer
- 8. T-Valve Connector
- 9. Bidet Hose
- 10. Remote Control Wall Mount
- 11. 2 ea Remote Screw
- 12. 2 ea Remote Anchor
- 13. 3 ea AAA Batteries



INSTALLATION

Before Installation:

Check water supply line:

Check the line that connects the toilet tank to the water shut off valve. If it is a rigid pipe, you may need to purchase a flexible hose to replace it before installing the Swash. The length of the hose and the size of the connectors will vary.

Residual moisture is normal

Every product is tested with pure water during production to ensure the highest quality and performance. It is normal to find a small amount of residual moisture on the product and in the reservoir and filter.

Tools:

A Phillips head or standard screwdriver may be needed to remove the existing toilet seat and a standard wrench may be needed for tight water supply connections.

Installation:

Please read these instructions carefully before installing the Swash. Failure to do so could result in flooding, leaking or damage to the product.

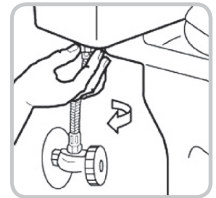
1. Existing Toilet Seat Removal

- a. Lift hinge covers and use a screwdriver to remove the mounting bolts.
- b. Remove the toilet seat.

Note: Steps may vary by type of seat.

2. Turn Off Water Supply Valve and Flush Toilet

- a. Turn water valve off completely to stop the flow of water.
- b. Flush toilet and hold down handle to completely empty tank.
- c. Disconnect water supply hose from toilet tank.



Important notes:

- You may wish to place a container under the tank to catch any excess water.
- Do not continue without completing the above steps. Failure to do so could result in flooding, leaking or damage to the Swash.

3. Connect T-Valve to Water Supply Line and Toilet Tank

Note: The T-Valve connects to the fill valve directly under your toilet tank - it does not connect at the wall.

Note: Only connect cold water line to T-Valve (from your toilet water supply line)

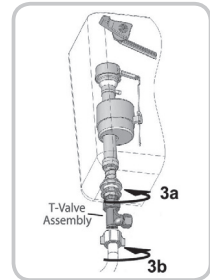
Note: If your water supply line is rigid you may need to replace it before continuing.

Swash 300

INSTALLATION

- a. Install the T-Valve with the rubber washer to the incoming water connection on the bottom of your toilet tank. Be sure that you place the flat edge of the rubber washer into the T-Valve against the metal with the raised lip facing the toilet tank connection.
 - b. Connect the water supply line coming from the wall to the bottom of the T-Valve.

Steps 3a & 3b

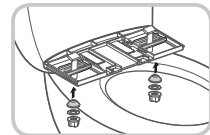


4. Connect Bidet Hose to T-Valve
 - a. Connect one end of the bidet hose to the T-Valve and set aside.

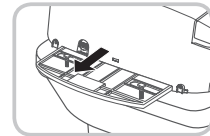
5. Install Mounting Plate & Attach Swash

- a. Place adjustable mounting plate over mounting holes on toilet, flat side down, rubber side of mounting plate should be closest to the toilet tank and rubber should be against the ceramic.
- b. Place adjustable brackets flat side down in the center of the square opening in the mounting plate and insert mounting bolts through adjustable brackets and mounting holes. Be sure that the square mounting bolt head is even with sides of adjustable bracket.
- c. Slide rubber cone washer, flat washer, and then barrel nut onto mounting bolts under the toilet bowl and tighten to keep mounting plate in place.
- d. Set the Swash flat on the toilet bowl in front of the mounting plate, and slide seat onto plate until it is secure and "clicks" into place.
- e. If the seat appears too short or too long for the toilet, adjust the mounting plate accordingly. To adjust the mounting plate, loosen barrel nut and slide seat forward or backwards as needed. Once the seat is lined up properly, tighten barrel nuts to hold in place.

Steps 5b & 5c



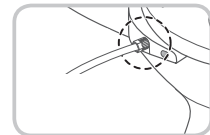
Step 5d



6. Connect the Bidet Hose

- a. Connect the bidet hose to the side of the bidet seat making sure the hose is firmly connected. Take care not to twist the bidet hose, excessively bend it, or strip the plastic screw threads when screwing the hose onto the bidet seat.

Step 6



7. Turn On Water Supply

- a. Open the main water supply valve slowly and check for leaks.
- b. Wait 5 minutes, check again and if there are no leaks continue.

INSTALLATION

8. Connect Power
 - a. Plug the power cord into the electrical outlet.

VERY IMPORTANT: To begin using the bidet, you must press the “POWER” button on the side of the seat. The red light on the side panel will come on indicating your Swash is ready to use.

Important: Make sure to only use a grounded GFI (ground fault interrupter) electrical outlet. In the case of a short circuit, a grounded GFI outlet may help prevent electric shock or injury. If using an extension cord is unavoidable, use one with grounding terminals for 120V~/60 Hz or higher only.

Installing the Remote Control

1. Battery Installation

- a. Separate the remote control from the magnetic wall mount by pulling apart gently.
- b. Turn remote over and open the battery compartment by popping off the battery cover with your finger or small coin. Insert three “AAA” type batteries (included) as indicated inside battery compartment and replace battery cover.
- c. To confirm the batteries are installed correctly, press either the “Seat Temp.” or “Water Temp.” button and a blue light should come on for a few seconds. If you continue to press the button, the light will turn pink, then red, and off.

2. Mount Remote (optional)

- a. Identify a location in the bathroom for the remote control that is visible and reachable from the toilet.
- b. Depending on the wall type, you can install using the supplied screws and anchor mounts or use the provided double stick tape on the back of the remote wall mount. Make sure the remote mount is fully secure with either method so that it does not fall and damage the remote control.
- c. Place the remote control into the mount as shown.

