

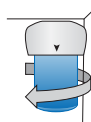


Installation Quick Start Guide for WSG-1

Important Installation Instructions

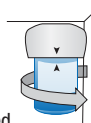
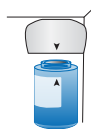
REMOVE

- 1 Locate existing filter and remove it by turning it counter clockwise as shown in graphic.



PREPARE

- 2 Carefully remove the plug on top of the new filter (twisting it back and forth eases the plug out).
- 3 Install new filter into refrigerator by aligning the start arrow with the arrow on the head of the refrigerator.
- 4 Twist the filter clockwise until the STOP arrow on the label is aligned with the arrow on the mount. The arrows must be aligned to activate the water valve located inside the filter mount. IF THE VALVE IS NOT FULLY ACTIVATED THE WATER FLOW WILL BE SLOWER THAN NORMAL. In some instances the partially activated valve may cause a “chattering” noise in the water line.
- 5 Check the water flow by filling a glass from the refrigerator water dispenser. If the water flow is slow or there is “chattering”, remove and reinstall the filter making sure it is seated securely and the arrows are aligned. Check again.
PLEASE CALL (866) 218-8473 IF YOU NEED ASSISTANCE.

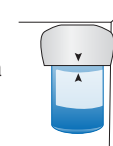


FLUSH

- 6 Run water from the dispenser for 5 minutes at .5 gpm (about 2½ gallons) to clear the system and prevent sputtering.

NOTE: Initial flow rate may be slower than expected.
Full flow rate should be restored within 24-36 hours.

- 7 Check the filter for any leaks. Inspect the mount area and filter bottom for any sign of moisture.



COMPLETE

- 8 Reset the “replace filter” light, if needed, by holding the reset button for three seconds.
- 9 Attach the included date label according to label instructions.
- 10 Replace filter every six months for best results.



Specifications

Operating Temperature:	33°-100°F (0.6°-38°C)
Operating Pressure:	30-100 psi (207-689 kPa)
Life:	6 Months or 300 gallons (1,136 liters)



This WSG-1 is Tested and Certified by NSF International against NSF/ANSI Standard 42 for the reduction of chlorine taste and odor.



This WSG-1 is Tested and Certified by WQA against NSF/ANSI Standard 42 for the reduction of chlorine taste and odor.

For further questions or assistance please call (866) 218-8473.

Warning: To reduce the risk of property damage from water leakage, the filter bypass plug MUST be used when a filter replacement cartridge is not installed. For cold water applications only. Do not use with water that is microbiologically unsafe or of unknown quality without adequate disinfection before or after the system.
Protect from freezing. REPLACE FILTER EVERY 6 MONTHS, OR IF BAD TASTE OR ODOR OCCUR

The risk associated with small parts can cause choking if swallowed.
Keep children away from small parts during the replacement of the water filter.