

SPECIFICATION SUBMITTAL SHEET



AG-4 thru AG-8



AG-9 & AG-10



AG-11 & AG-12

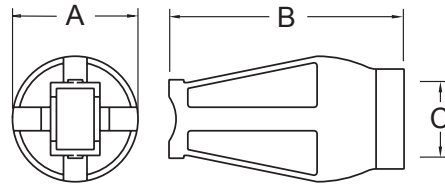
SIZES:

- 1/4" - 1/2" 3/4" - 1" 1-1/4" - 2"
- 2 1/2" - 6" 8" - 10"

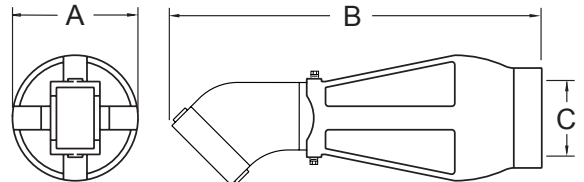
- MODEL:** 375 475 975XL

DIMENSIONS & WEIGHTS (do not include pkg.)

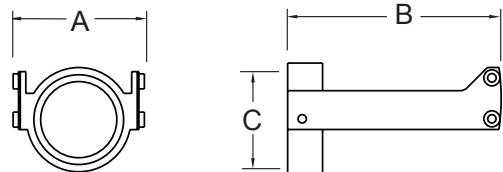
| MODEL | DIMENSIONS (approximate) | | | | | | C OUTLETPipe SIZE | WEIGHT | |
|--------|--------------------------|--------------|-------|-----|--------|-----|-------------------------|--------|-----|
| | SIZES | FOR MODEL | A | | B | | | lbs. | kg |
| | | | in. | mm | in. | mm | | | |
| AG-8 | 1/4" - 1/2" | 975XL | 2 1/2 | 64 | 3 1/2 | 89 | 1" NPT | 2 | 0.9 |
| AG-4 | 3/4"-1" | 975XL | 3 1/4 | 83 | 5 | 127 | 1" NPT | 2 | 0.9 |
| AG-5 | 1 1/4" - 2" | 975XL | 4 1/2 | 114 | 8 | 203 | 2" NPT | 3 | 1.4 |
| AG-6 | 2 1/2" - 3" | 475V | 5 3/8 | 137 | 10 | 254 | 3" NPT | 5 | 2.3 |
| AG-6 | 2 1/2" - 6" | 375, 475 | 5 3/8 | 137 | 10 | 254 | 3" NPT | 5 | 2.3 |
| AG-7 | 8" - 10" | 375, 475 | 7 | 178 | 11 | 279 | 4" NPT | 8 | 3.6 |
| AG-9 | 4" - 6" | 475V | 5 3/8 | 137 | 14 1/2 | 368 | 3" NPT | 9 | 4 |
| AG-10 | 8" - 10" | 475V | 7 | 178 | 16 1/2 | 413 | 4" NPT | 11 | 5 |
| AG-11 | 1/2" - 1" | 375 | 3 3/4 | 95 | 5 1/2 | 140 | 2" IPS Slip | 1 | 0.5 |
| AG-11V | 1/2" - 1" | 375 VERT. | - | - | - | - | 2" IPS Slip | 1 | 0.5 |
| AG-12 | 1 1/4" - 2" | 375 | 6 1/2 | 165 | 8 | 200 | 3" IPS Slip | 1 | 0.5 |



AG-4 THRU AG-8



AG-9 & AG-10



AG-11 & AG-12

APPLICATION

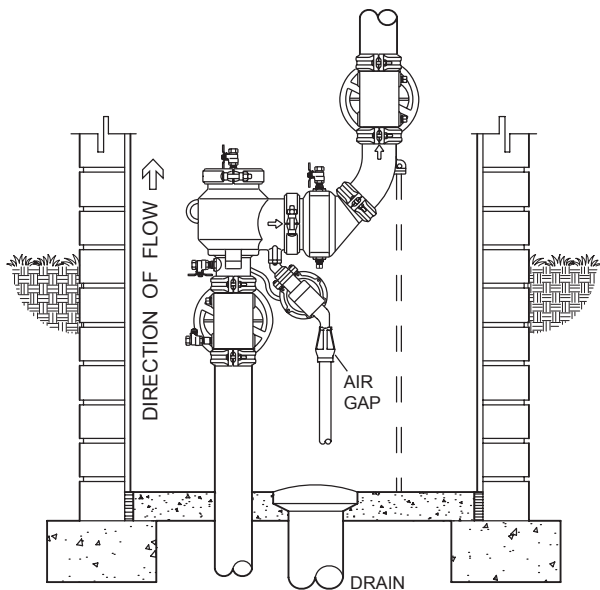
Designed for use with 1/4" thru 10" Model 975XL, 375, and 475 Reduced Pressure Principle Backflow Preventers on horizontal or vertical installations. Device is necessary when installing a drain line and can be mounted to the body. (Drain line can be any standard piping material.)

APPROVALS

ANSI/ASME A 112.1.2

MATERIALS

- Body: Cast grey iron, epoxy painted
- Body (AG-11, 12): Nylon
- Elbow: Cast grey iron, epoxy painted
- Bolts: Steel, zinc plated



INDOOR INSTALLATION

TYPICAL INSTALLATION

Local codes shall govern installation requirements. To be installed in accordance with the manufacturers' instructions and the latest edition of the Uniform Plumbing Code.