

JANDORF®



LC#190906

ELECTRICAL PRODUCTS
C · A · T · A · L · O · G

LAMP & LIGHTING PARTS

E1

SOCKETS

E21

SWITCHES

E33

CARBON BRUSHES

E53

FUSES

E59

PROTECTORS

E67

TERMINALS

E77

Introduction	
About Us	v-vi
Project-Oriented Consumer Packaged Program	vii
Differentiated Merchandising Program	viii

LAMP & LIGHTING PARTS E1

Pull Chain Lighting Parts	
Beaded Chain	E2-E3
Decorative Pull Chain	E4
Ceiling Lighting Parts	
Glass Shade Holders	E5
Canopies	E6-E7
Blank-Ups	E7
Swag Kits	E8
Crossbars	E9
Screws	E10
Ceiling Hickeys	E10
Socket Covers	E10
Fan Balancing Kit	E10
Assorted Hardware	E11-E12
Lamp Parts	
Check Rings	E12
Hex Nuts & Lock Nuts	E12
Couplings & Reducers	E13
Shade Risers	E14
Finials	E14-E15
Cords	E16
Harps	E17
Lamp Kits	E18
Nipples & Pipes	E19
Reference	
Thread Data Reference	E20

SOCKETS E21

Candelabra Base Sockets	E22-E23
Miniature Base Sockets	E23
Fluorescent Lamp Holders	E24-E25
Halogen Sockets	E25
Phenolic Sockets	E26
Phenolic Snap-In Sockets	E27
Attach-On Sockets	E27
Metallic Sockets- Brass	E28
Metallic Sockets- Nickel	E29
Porcelain Sockets	E30
Socket Extenders & Reducers	E31
Socket Keys & Knobs	E31
Reference	
Socket Base Size Chart	E32

SWITCHES E33

Momentary Switches	E34-E35
Snap-In Outlets	E36
Pilot Light	E36
Slide Switches	E37
Rotary Switches	E38-E39
Pull Chain Switches	E40
Feed-Through Switches	E41
Push Button Switches	E42-E43
Rocker Switches	E44-E45
Toggle Switches	E46-E49
Accessories	E50
Reference	
Switch Types	E51
Switch Terminology	E52

CARBON BRUSHES E53

Tamped with Spring & Round Cap	E54-E56
Wireless with Spring	E56
Wireless	E56-E57
Tamped with Spring & Eared Cap	E57
Tamped Single Wire with Quick Disconnect	E57
Reference	
Product Applications	E58

FUSES	E59	TERMINALS	E77
Small Dimension Fuses		Ring Terminals	
1/4" Dia. x 1-1/4" Length Fast Acting Fuses		Uninsulated	E78
Series: AGC (FSA)	E60	Vinyl & Nylon Insulated & Heat Shrink	E79
Series: ABC (FCA)	E60	Spade Terminals	
1/4" Dia. x 1-1/4" Length Time Delay Fuses		Uninsulated	E80
Series: MDA (TCA)	E61	Vinyl & Nylon Insulated	E80
1/4" Dia. x 5/8" to 1" Length Fast Acting Fuses		Locking	
Series: AGA (FSH)	E62	Uninsulated	E81
Series: AGW (FSW)	E62	Vinyl Insulated	E81
Series: AGX (FSX)	E62	Flanged	
5 x 20mm North American (UL) Fuses		Uninsulated	E81
Series: GMA (FSC)	E63	Vinyl Insulated	E81
Series: GMC (MSC)	E63	Disconnect Terminals	
Series: GMD (TSC)	E63	Uninsulated & High Temperature	E82
5 x 20mm European (IEC) Fast Acting Fuses		Vinyl Insulated & Heat Shrink	E83
Series: GDA (FCD)	E64	Vinyl & Nylon Fully Insulated	E84
Series: S501 (FCD)	E64	Piggy Back	
5 x 20mm European (IEC) Time Delay Fuses		Uninsulated	E85
Series: GDC (TSD)	E65	Vinyl Insulated	E85
Series: S506 (TSD)	E65	Flag	
Reference		Uninsulated & High Temperature	E85
Fuse Terminology	E66	Nylon Fully Insulated	E85
		Adapter	
		3-Way Uninsulated	E86
PROTECTORS	E67	Hook Terminals	
Cord Protectors		Vinyl Insulated	E86
Straight Thru Cord Protectors	E68	Bullet Terminals & Adapter	
Right Angle Cord Protectors	E68	Uninsulated	E87
Spring Cord Protectors	E69	Nylon Insulated	E87
Rubber Cord Protectors	E69	Butt Splice Connectors	
Bushings		Uninsulated & High Temperature	E88
All Fit Bushings	E70	Vinyl & Nylon Insulated & Heat Shrink	E88
Nylon Bushings	E70	3-Way & 4-Way Vinyl Insulated	E89
Rubber Bushings	E71	Parallel Splice Connectors	
Grommets		High Temp	E89
Rubber Grommets	E72-E73	Closed End Connectors	
Desk Grommets	E74	Nylon Insulated	E89
Clamps		Wire Connectors	
Nylon Clamps	E75	Porcelain	E89
Steel Clamps	E75	Self Stripping Connectors	
Clips		Bullet Mate	E90
Adhesive Backed Cable Clips	E76	T-Tap	E90
		2-Way & 3-Way	E90
		Electrical Lugs	
		Uninsulated - Plated & Unplated	E91
		Reference	
		Size Charts	E92

About Us

INTRO

IN THE BEGINNING

Jandorf Electric Specialty was founded in Baltimore, Maryland around 1947 when Louis Jandorf went to New York City looking for electrical supplies, sockets and cords. Repair items were scarce due to World War II, but people repaired their items instead of throwing them away. One of their big sellers at the time was the iron cord.

As in most family businesses, Louis' two sons, Louis and Ross joined their father focusing their efforts on large appliance stores. Dryer vents, cord fittings, thermostats and venting were some of the parts they carried during this time period.



Photo courtesy of <http://importantpics.com/1950DCPhotos/>

CREATING THE CATEGORY

Natural expansion and growth occurred as they began to sell to hardware stores. Jandorf has a history of listening to the needs of their customers. The Jandorf yellow box was a suggestion by one of their customers. The country was buying houses and with home ownership came the fixing and repairing of items. The stores needed a method for organizing the items. There were small, medium and large drawers each with its own internal configuration. By focusing on the stores' needs the business continued to expand.

Photo courtesy of <http://importantpics.com/1950DCPhotos/>



Starting from Baltimore there were two sales routes; one was to Florida and the other to New Orleans. One year Louis would go to Florida and Ross would go to New Orleans. And the following year they would flip flop. To this day many hardware stores remember the Jandorfs and their wives visiting their store on these road trips.

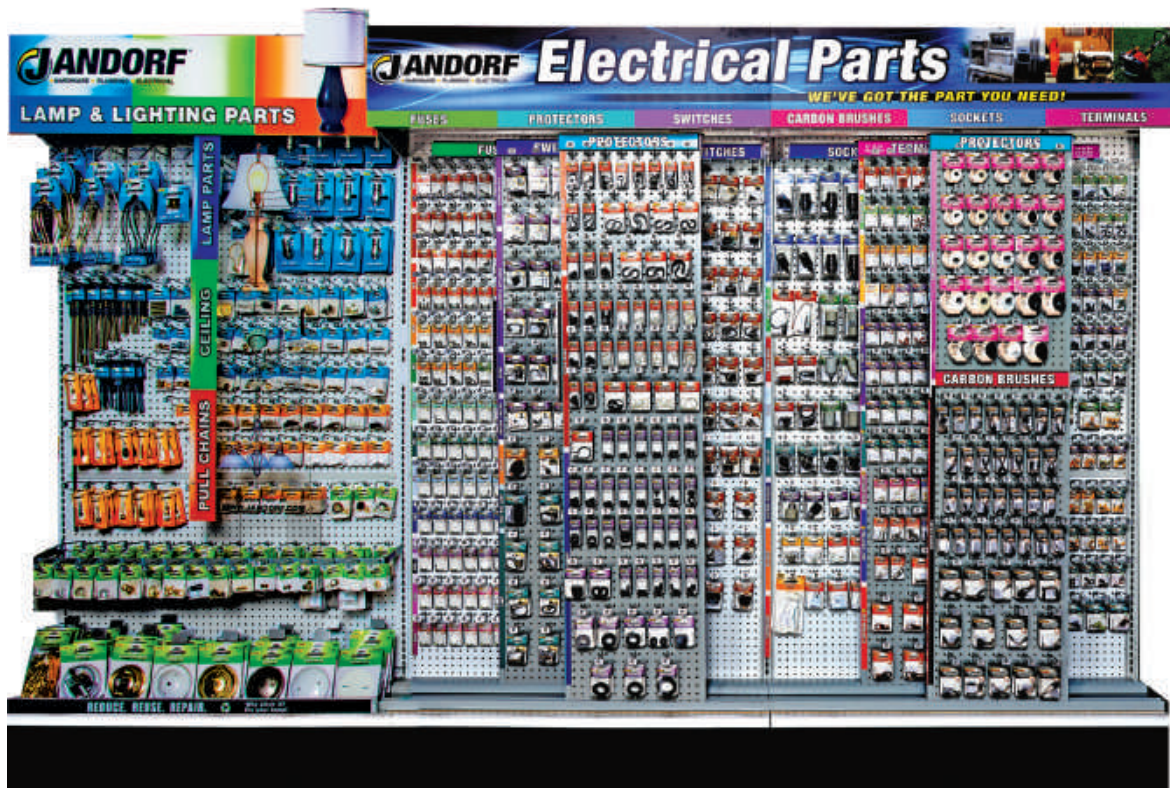
Jandorf was growing and thriving, creating the specialty electrical and hardware business. Their success led to an increase in competition as more distributors entered the specialty business. In 1993 Jandorf was acquired by Orrco, Inc., moving its headquarters from Baltimore, Maryland to Orrville, Ohio in 1995.

About Us

INTRO

DEFINING THE FUTURE

In 2007 Jandorf was acquired by Hy-Ko products, an industry leader in the hardware industry. Jandorf has begun a major transformation in recent years. As the creator of the specialty categories it has once again begun to emerge as a leader. This renewed energy can be seen in the complete repackaging of the electric product line in consumer friendly packages that work for a modern hardware store.



Once again consumers are repairing and fixing items looking to Jandorf for that guidance. Taking a cue from its past, Jandorf continues to engage and work with the retailers to make sure we are meeting their needs now and in the future.

Project-Oriented Consumer Packaged Program

INTRO

- Maximum exposure of products so that customers can view and feel the quality
- Color-coded by product category/usage for easy & accurate product selection
- Helpful bilingual “how-to” instructions for each part

Lamp Parts

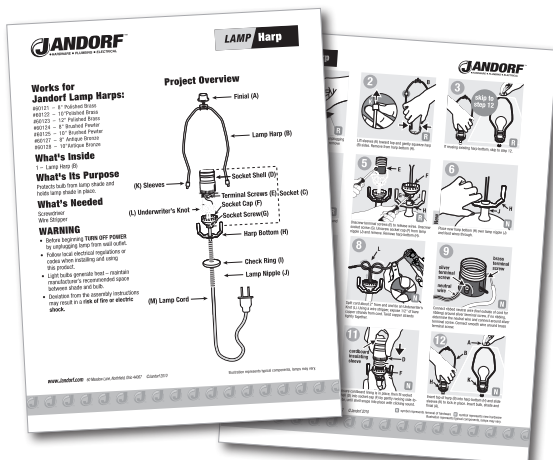


Maximum Product Exposure

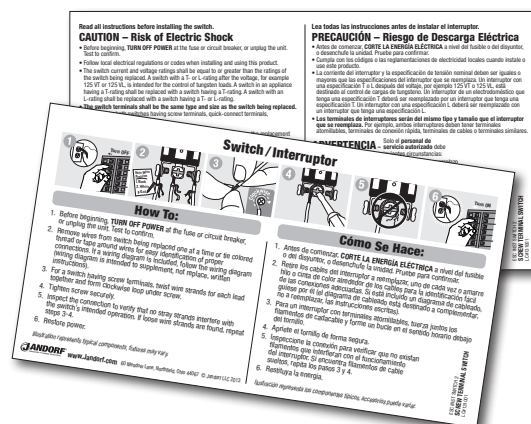
Electrical Specialty



Modern Packaging



Easy “How To” diagrams at www.Jandorf.com



Bilingual Instructions



Award Winning Packaging



Award Winning Packaging

Differentiated Merchandising Program

INTRO

- Modernized program that is consumer focused
- All packages with UPC codes for easy checkout & inventory control
- Efficiently sized packages maximize planogram space

Lamp Parts



Attention Grabbing 3-D Header



Patented Translucent Slider Panel

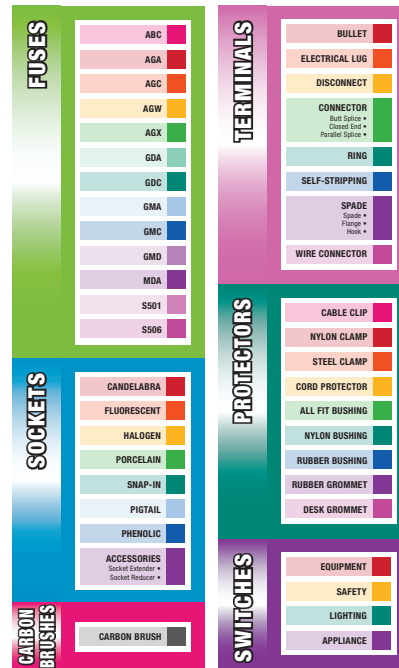


Award Winning Merchandising

Electrical Specialty



High Impact Header Sign with Product Application Images



Color-Coded Product Categories



Award Winning Merchandising

CONTENTS

Pull Chain Lighting Parts

Beaded Chain	E2-E3
Decorative Pull Chain	E4

Ceiling Lighting Parts

Glass Shade Holders	E5
Canopies	E6-E7
Blank-Ups	E7
Swag Kits	E8
Crossbars	E9
Screws	E10
Ceiling Hickeys	E10
Socket Covers	E10
Fan Balancing Kit	E10
Assorted Hardware	E11-E12

Lamp Parts

Check Rings	E12
Hex Nuts & Lock Nuts	E12
Couplings & Reducers	E13
Shade Risers	E14
Finials	E14-E15
Cords	E16
Harps	E17
Lamp Kits	E18
Nipples & Pipes	E19

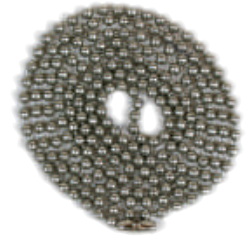
Reference

Thread Data Reference	E20
---------------------------------	-----



Beaded Chain

LAMP PARTS



Beaded Chain - Bulk Spool

Size	Length	Material	BULK SPOOL	
			Item #	Pk Qty
#6	100'	Solid Brass (Non-Rusting)	92539	100'
#6	100'	Brass Plated Steel	88430	100'
#6	100'	Nickel Plated Brass (Non-Rusting)	92544	100'
#6	100'	Nickel Plated Steel	88444	100'
#10	100'	Nickel Plated Brass (Non-Rusting)	89477	100'

Beaded Chain - Consumer Packaged

Size	Length	Material	PACKAGED	
			Item #	Pk Qty
#6	3'	Solid Brass	94993	1
#6	5'	Brass	60361	1
#6	3'	Brass Plated Steel	94992	1
#6	3'	Antique Brass	60377	1
#6	3'	Rustic Bronze Finish	60352	1
#6	3'	Brushed Pewter Finish	60324	1
#6	3'	Nickel Plated Steel	94991	1
#6	3'	Black Coated Steel	60371	1
#6	3'	White Coated Steel	60373	1
#10	3'	Nickel Plated Steel	94995	1



#3 Nickel Plated Brass
 #3 Nickel Plated Steel
 #6 Solid Brass
 #6 Brass Plated Steel
 #6 Nickel Plated Steel
 #6 Nickel Plated Brass
 #6 Stainless Steel
 #10 Brass Plated Steel
 #10 Nickel Plated Steel
 #10 Stainless Steel



Brass or Brass Plated Steel Antique Brass Rustic Bronze Brushed Pewter



Nickel Plated Steel Black White

Size	Ball Diameter
#6	1/8"
#10	3/16"

Beaded Chain



Bell

Size	Material	PACKAGED		BAGGED	
		Item #	Pk Qty	Item #	Pk Qty
#6	Brass	60355	5	90094	50
#6	Nickel Plated	60375	5		
#10	Nickel Plated	60360	5	88201*	50



#6 Brass



#6 Nickel Plated



#10 Nickel Plated

Chain Connector

Size	Material	PACKAGED		BAGGED	
		Item #	Pk Qty	Item #	Pk Qty
#6	Brass	60353	5	90416	100
#6	Antique Brass	60376	5		
#6	Rustic Bronze Finish	60351	5		
#6	Brushed Pewter Finish	60374	5		
#6	Nickel Plated	60354	5	90418	100
#6	Black Coated Brass	60370	5		
#6	White Coated Brass	60372	5		
#10	Nickel Plated	60358	5	90273	100



#3 Brass



#6 Brass



#6 Antique Brass



#6 Rustic Bronze



#6 Brushed Pewter



#6 Nickel Plated



#6 Stainless Steel



#6 Black



#6 White



#10 Brass



#10 Nickel Plated

Coupling

Size	Material	PACKAGED		BAGGED	
		Item #	Pk Qty	Item #	Pk Qty
#6	Brass	60356	5	90088*	50
#6	Nickel Plated	60357	5	90091*	50
#10	Nickel Plated	60359	5	88198*	50



#6 Brass



#6 Nickel Plated



#10 Nickel Plated



*Reference Number

Decorative Pull Chain

LAMP PARTS



Solid Brass Ball

Length: 12" Chain
Material: Solid Brass Chain

PACKAGED	BAGGED
Item #: 60314	Item #:
Pk Qty: 1	Pk Qty:



Antique Brass Ball

Length: 12" Chain
Material: Antique Brass Chain

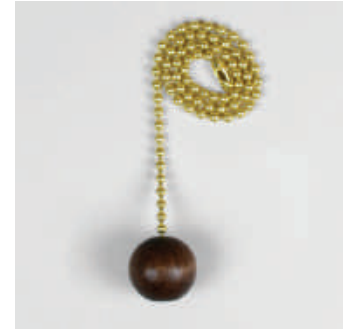
PACKAGED	BAGGED
Item #: 60311	Item #:
Pk Qty: 1	Pk Qty:



Nickel Ball

Length: 12" Chain
Material: Nickel Chain

PACKAGED	BAGGED
Item #: 60323	Item #:
Pk Qty: 1	Pk Qty:



Walnut Wooden Ball

Length: 12" Chain
Material: Solid Brass Chain

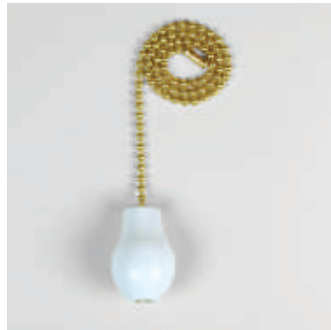
PACKAGED	BAGGED
Item #: 60312	Item #:
Pk Qty: 1	Pk Qty:



Walnut Wooden Knob

Length: 12" Chain
Material: Solid Brass Chain

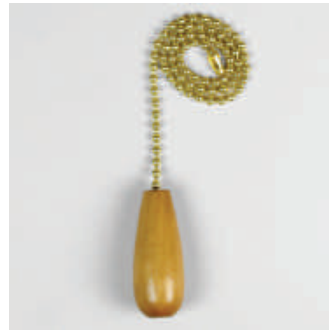
PACKAGED	BAGGED
Item #: 60318	Item #:
Pk Qty: 1	Pk Qty:



White Wooden Knob

Length: 12" Chain
Material: Solid Brass Chain

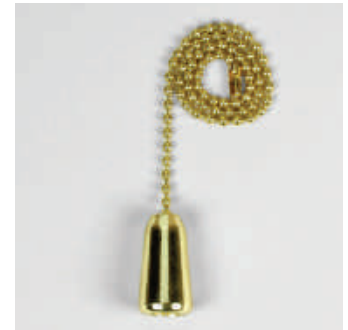
PACKAGED	BAGGED
Item #: 60319	Item #:
Pk Qty: 1	Pk Qty:



Natural Wooden Cylinder

Length: 12" Chain
Material: Solid Brass Chain

PACKAGED	BAGGED
Item #: 60321	Item #:
Pk Qty: 1	Pk Qty:



Brass Teardrop

Length: 12" Chain
Material: Solid Brass Chain

PACKAGED	BAGGED
Item #: 60315	Item #:
Pk Qty: 1	Pk Qty:



Acrylic Cylinder

Length: 12" Chain
Material: Solid Brass Chain

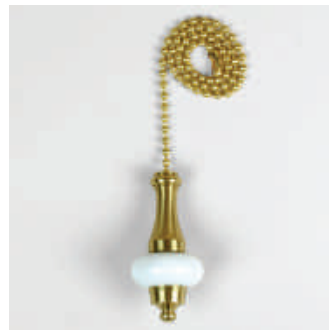
PACKAGED	BAGGED
Item #: 60316	Item #:
Pk Qty: 1	Pk Qty:



Acrylic Sphere

Length: 12" Chain
Material: Solid Brass Chain

PACKAGED	BAGGED
Item #: 60320	Item #:
Pk Qty: 1	Pk Qty:



Brass & White Ceramic

Length: 12" Chain
Material: Solid Brass Chain

PACKAGED	BAGGED
Item #: 60322	Item #:
Pk Qty: 1	Pk Qty:



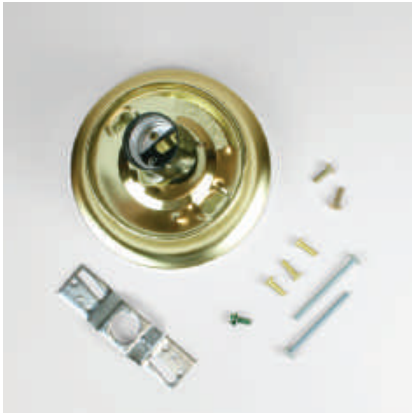
Braided Cord

Length: 3' Cord
Material: with End Bell & Connector

PACKAGED	BAGGED
Item #: 60313	Item #: 90234
Pk Qty: 1	Pk Qty: 10

Glass Shade Holders

LAMP PARTS



Glass Shade Holder

Size: 3-1/4"

Material: Brass Finish

Kit Contents:

- 1 – 3-1/4" Glass Shade Holder with 18AWG pre-wired 6" insulated leads, ground wire and insulation – Brass Finish, Rated: 250V for use with 60W lamp maximum
- 1 – 4" Offset Crossbar
- 2 – 8-32 x 1/2" Mounting Screws
- 2 – 8-32 x 2" Mounting Screws
- 1 – Grounding Screw
- 3 – Knurled Screws – Brass Finish

PACKAGED	BAGGED
Item #: 60221	Item #:
Pk Qty: 1 Kit	Pk Qty:



Glass Shade Holder

Size: 4"

Material: Brass Finish

Kit Contents:

- 1 – 4" Glass Shade Holder with 18AWG pre-wired 6" insulated leads, ground wire and insulation – Brass Finish, Rated: 250V for use with 60W lamp maximum;
- 1 – 4" Offset Crossbar
- 2 – 8-32 x 1/2" Mounting Screws
- 2 – 8-32 x 2" Mounting Screws
- 1 – Grounding Screw
- 3 – Knurled Screws – Brass Finish

PACKAGED	BAGGED
Item #: 60222	Item #:
Pk Qty: 1 Kit	Pk Qty:



Twin Cluster Ceiling Kit

Size:

Material:

Kit Contents:

- 1 – Canopy;
- 1 – Two-Bulb Cluster Socket with 18AWG pre-wired 8" insulated leads, Rated: 250V for use with 2 light bulbs, 50 W Maximum
- 1 – 4" Offset Crossbar
- 2 – 8-32 X 1/2" Mounting Screws
- 2 – 1/8 IP Rubber Washers
- 1 – Lock-up Cap – Brass Finish

PACKAGED	BAGGED
Item #: 60223	Item #:
Pk Qty: 1 Kit	Pk Qty:

Canopies

LAMP PARTS

Traditional Canopy Kit Contents

- 1 – 5" Canopy;
- 1 – 1" Loop 1/8 IP;
- 1 – 1/8 IP Lock Washer;
- 1 – 1/8 IP Lock Nut;
- 1 – Offset Crossbar;
- 2 – 8-32 X 1" Mounting Screws;
- 2 – 8-32 X 1/2" Mounting Screws;
- 2 – 8-32 Cap Nuts



Traditional Canopy Kit

Size: 5"
Material: Brass
Thrd Size: 7/16" Center Hole

PACKAGED	BAGGED
Item #: 60214	Item #:
Pk Qty: 1 Kit	Pk Qty:



Traditional Canopy Kit

Size: 5"
Material: Antique Brass
Thrd Size: 7/16" Center Hole

PACKAGED	BAGGED
Item #: 60215	Item #:
Pk Qty: 1 Kit	Pk Qty:



Traditional Canopy Kit

Size: 5"
Material: Brushed Pewter
Thrd Size: 7/16" Center Hole

PACKAGED	BAGGED
Item #: 60216	Item #:
Pk Qty: 1 Kit	Pk Qty:



Traditional Canopy Kit

Size: 5"
Material: White
Thrd Size: 7/16" Center Hole

PACKAGED	BAGGED
Item #: 60217	Item #:
Pk Qty: 1 Kit	Pk Qty:



Traditional Canopy Kit

Size: 5"
Material: Oil Rubbed Bronze
Thrd Size: 7/16" Center Hole

PACKAGED	BAGGED
Item #: 60213	Item #:
Pk Qty: 1 Kit	Pk Qty:

Canopies / Blank-Ups



Modern Canopy Kit

Size: 5"
Material: White
Thrd Size: 7/16" Center Hole
Kit Contents:

- 1 – 5" White Canopy
- 1 – 1" Loop 1/8 IP
- 1 – 1/8 IP Lock Washer
- 1 – 1/8 IP Lock Nut
- 2 – 8-32 X 1-1/2" Mounting Screws

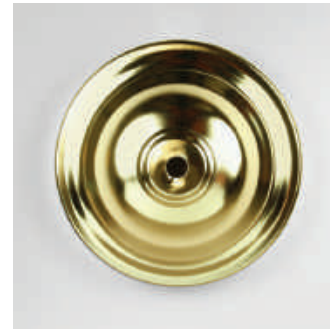
PACKAGED	BAGGED
Item #: 60211	Item #:
Pk Qty: 1 Kit	Pk Qty:



Canopy

Size: 5"
Material: Antique Brass
Thrd Size: 1-1/16" Center Hole

PACKAGED	BAGGED
Item #: 60212	Item #:
Pk Qty: 1	Pk Qty:



Blank-up Canopy

Size: 5"
Material: Polished Brass
Thrd Size: 7/16" Center Hole

PACKAGED	BAGGED
Item #: 60224	Item #:
Pk Qty: 1	Pk Qty:



Blank-up Kit

Size: 5"
Material: White
Thrd Size: 7/16" Center Hole
Kit Contents:

- 1 – 5" White Blank-Up Canopy
- 1 – 3/8 IP X 1/8 IP Reducer
- 1 – 1/8 IP X 2-1/2" Nipple
- 1 – 1/8 IP White Plastic Cap Nut

PACKAGED	BAGGED
Item #: 60218	Item #:
Pk Qty: 1 Kit	Pk Qty:



Blank-up Kit

Size: 5"
Material: White
Thrd Size: Screw Holes 2-3/4" Apart

- Kit Contents:**
- 1 – 5" White Blank-up Canopy
 - 1 – Offset Crossbar
 - 2 – 8-32 x 1-1/2" Mounting Screws
 - 2 – Brass Cap Nuts

PACKAGED	BAGGED
Item #: 60219	Item #:
Pk Qty: 1 Kit	Pk Qty:



Blank-up Kit

Size: 4-3/4"
Material: White
Thrd Size: Screw Holes 3-1/2" Apart

- Kit Contents:**
- 1 – 4-3/4" White Blank-up Cover
 - 2 – 8-32 X 3/4" White Screws

PACKAGED	BAGGED
Item #: 60220	Item #:
Pk Qty: 1 Kit	Pk Qty:

Swag Kits

LAMP PARTS



Swag Kit

Size: 15' Chain, 20' Cord

Material: Polished Brass Chain

Kit Contents:

- 1 – 15' Chain – Polished Brass
- 1 – 20' SPT-1 Cord with Polarized Plug (18 Gauge) – Gold
- 1 – Feed-Through Cord Switch (3A 125V)
- 2 – Swag Hooks – Polished Brass
- 2 – Hanger Bolts
- 2 – Threaded Studs
- 2 – Spring Toggle Wings

PACKAGED	BAGGED
Item #: 60260	Item #:
Pk Qty: 1 Kit	Pk Qty:



Swag Kit

Size: 15' Chain, 20' Cord

Material: Antique Brass Chain

Kit Contents:

- 1 – 15' Chain – Antique Brass
- 1 – 20' SPT-1 Cord with Polarized Plug (18 Gauge) – Gold
- 1 – Feed-Through Cord Switch (3A 125V)
- 2 – Swag Hooks – Antique Brass
- 2 – Hanger Bolts
- 2 – Threaded Studs
- 2 – Spring Toggle Wings

PACKAGED	BAGGED
Item #: 60261	Item #:
Pk Qty: 1 Kit	Pk Qty:



Swag Kit

Size: 15' Chain, 20' Cord

Material: White Chain

Kit Contents:

- 1 – 15' Chain – White
- 1 – 20' SPT-1 Cord with Polarized Plug (18 Gauge) – White
- 1 – Feed-Through Cord Switch (3A 125V)
- 2 – Swag Hooks – White
- 2 – Hanger Bolts
- 2 – Threaded Studs
- 2 – Spring Toggle Wings

PACKAGED	BAGGED
Item #: 60262	Item #:
Pk Qty: 1 Kit	Pk Qty:

Crossbars

LAMP PARTS



Offset Swivel Crossbar

Size: 4"
Thrd Size: Slips 1/8 IP with Grounding Screw

PACKAGED	BAGGED
Item #: 60205 Pk Qty: 1	Item #: 94189* Pk Qty: 6



Flat Crossbar

Size: 4"
Thrd Size: Center Tapped 1/8 IP

PACKAGED	BAGGED
Item #: 60204 Pk Qty: 1	Item #: 88954* Pk Qty: 12



Flat Crossbar

Size: 4"
Thrd Size: Center Tapped 1/4 IP

PACKAGED	BAGGED
Item #: 60208 Pk Qty: 1	Item #: 89596* Pk Qty: 6



Flat Crossbar

Size: 4"
Thrd Size: Center Tapped 3/8 IP

PACKAGED	BAGGED
Item #: 60209 Pk Qty: 1	Item #: 89679* Pk Qty: 10



Offset Crossbar

Size: 4"
Thrd Size: Slips 1/8 IP
Kit Contents:
1 – 4" Offset Crossbar
2 – 8-32 x 1/2" Mounting Screws

PACKAGED	BAGGED
Item #: 60203 Pk Qty: 1 Kit	Item #: 89647* Pk Qty: 10



Flat Crossbar Kit

Size: 4"
Thrd Size: Center Tapped 1/4 IP
Kit Contents:
1 – 4" Flat Crossbar – 1/4 IP
1 – 3/8 IP X 1/4 IP Hickey
1 – 1/4 IP X 1/8 IP Reducer
2 – 8-32 x 1/2" Mounting Screws

PACKAGED	BAGGED
Item #: 60201 Pk Qty: 1 Kit	Item #: Pk Qty:



All Purpose Crossbar

Size: Adjustable from 3-7/8" to 5"
Thrd Size: Slips 3/8 IP
Kit Contents:
1 – All-Purpose Crossbar – Adjustable from 3-7/8" to 5"
2 – 1/2" Mounting Screws
2 – 3/4" Mounting Screws

PACKAGED	BAGGED
Item #: 60202 Pk Qty: 1 Kit	Item #: 89033* Pk Qty: 10



Screw Collar Loop Crossbar Kit

Size: 4"
Thrd Size: Center Tapped 1/4 IP
Kit Contents:
1 – 4" Flat Crossbar – 1/4 IP
1 – Screw Collar Loop
1 – 1/4 IP Lock Nut
1 – 3/8 IP Lock Nut
1 – 3/8 IP X 1/4 IP Hickey
1 – 1/4 IP x 1-1/2" Nipple
2 – 8-32 x 1/2" Mounting Screws

PACKAGED	BAGGED
Item #: 60206 Pk Qty: 1 Kit	Item #: Pk Qty:

*Reference Number

Screws / Ceiling Hickeys / Socket Covers / Fan Balancing Kit

LAMP PARTS



Fixture Screws, Assorted

Thread Size	PACKAGED	
	Item #	Pk Qty
8-32	60141	13

Assortment Contains:

- 3 – 8-32 x 1/2" Knurled Head Screws – Brass Plated;
- 3 – 8-32 x 1/2" Knurled Head Screws – Nickel Plated
- 3 – 8-32 x 3/4" Knurled Head Screws – Brass Plated
- 2 – 8-32 x 1" Slotted Machine Screws – Brass Plated
- 2 – 8-32 x 2" Slotted Machine Screws – Brass Plated



Fan Blade Screws, Assorted

Thread Size	PACKAGED	
	Item #	Pk Qty
8-32 & 10-24	60302	20

Assortment Contains:

- 5 – 8-32 x 1/2" Knurled Head Machine Screws – Brass Plated;
- 5 – 8-32 x 1/2" Knurled Head Machine Screws – Antique Brass Plated;
- 5 – 10-24 x 1/2" Phillips Pan Head Machine Screws – Brass Plated;
- 5 – 10-24 x 1/2" Phillips Pan Head Machine Screws – Antique Brass Plated



Ceiling Hickeys

Size	PACKAGED		BAGGED	
	Item #	Pk Qty	Item #	Pk Qty
1/8 IP x 1/8 IP	60238	1	94186*	5
1/8 IP x 1/4 IP	60237	1	94185*	5
1/8 IP x 3/8 IP	60241	1	88569*	5
1/4 IP x 3/8 IP	60240	1	88566*	5
3/8 IP x 3/8 IP	60239	1	94187*	5



Socket Cover

Size: 4"
Material: Drip Candle
Thrd Size: Candelabra Base
 For use with a maximum 25W bulb

PACKAGED	BAGGED
Item #: 60225 Pk Qty: 2	Item #: Pk Qty:



Socket Cover

Size: 4"
Material: White
Thrd Size: Candelabra Base
 For use with a maximum 25W bulb

PACKAGED	BAGGED
Item #: 60226 Pk Qty: 2	Item #: 89466* Pk Qty: 1



Socket Cover

Size: 4"
Material: White
Thrd Size: Medium Base
 For use with a maximum 25W bulb

PACKAGED	BAGGED
Item #: 60227 Pk Qty: 2	Item #: 89352* Pk Qty: 1



Fan Balancing Kit

Apps: Fan Hardware
Details:
 1 – 1-5/8" Plastic Fan Blade Clip;
 2 – Balancing Weights

PACKAGED	BAGGED
Item #: 60301 Pk Qty: 1 Kit	Item #: Pk Qty:

Assorted Hardware

LAMP PARTS



Cap Nut, Brass Ball

Size: 3/8" Dia.
Thrd Size: 8-32
Material: Solid Brass

PACKAGED	BAGGED
Item #: 60250	Item #:
Pk Qty: 4	Pk Qty:



Lock-up Caps

Size:
Thrd Size: 1/8 IP
Material: White, Plastic

PACKAGED	BAGGED
Item #: 60230	Item #: 88424*
Pk Qty: 2	Pk Qty: 12



Lock-up Cap

Size:
Thrd Size: 1/8 IP
Material: Brass Finish, Plastic

PACKAGED	BAGGED
Item #: 60231	Item #:
Pk Qty: 1	Pk Qty:



Lock-up Caps

Size:
Thrd Size: 1/8 IP
Material: Brass Finish

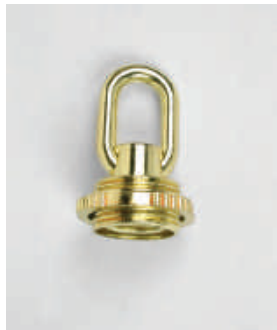
PACKAGED	BAGGED
Item #: 60232	Item #: 88886*
Pk Qty: 2	Pk Qty: 10



Lock-up Caps

Size:
Thrd Size: 1/8 IP
Material: Nickel Finish

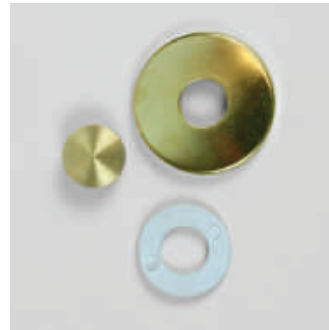
PACKAGED	BAGGED
Item #: 60233	Item #: 88398*
Pk Qty: 2	Pk Qty: 10



Screw Collar Loop

Size:
Thrd Size: 1/4 IP
Material: Brass Finish

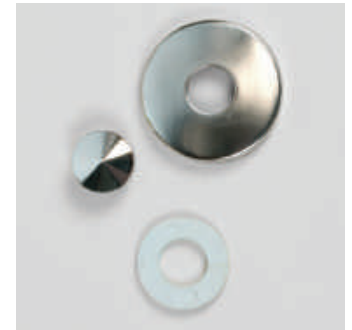
PACKAGED	BAGGED
Item #: 60236	Item #: 88724*
Pk Qty: 1	Pk Qty: 3



Lock-up Kit

Size: 1-1/8" Check Ring
Thrd Size: 1/8 IP
Material: Brass Finish
Kit Contents:
1 - 1-1/8" Check Ring - Brass Finish
1 - Lock-up Cap 1/8 IP - Brass Finish
1 - 1/8 IP x 1" OD Rubber Washer - White

PACKAGED	BAGGED
Item #: 60234	Item #:
Pk Qty: 1 Kit	Pk Qty:



Lock-up Kit

Size: 1-1/8" Check Ring
Thrd Size: 1/8 IP
Material: Nickel Finish
Kit Contents:
1 - 1-1/8" Check Ring - Nickel Finish
1 - Lock-up Cap 1/8 IP - Nickel Finish
1 - 1/8 IP x 1" OD Rubber Washer - White

PACKAGED	BAGGED
Item #: 60235	Item #:
Pk Qty: 1 Kit	Pk Qty:

*Reference Number

Assorted Hardware / Hex Nuts & Lock Nuts

LAMP PARTS

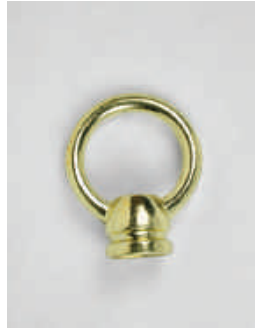


Loop Assortment, Male & Female

Size: 1" Dia.
Thrd Size: 1/8 IP
Material: Brass Finish

Kit Contents:
 2 – 1" Diameter Male Loops 1/8 IP – Brass Finish
 2 – 1" Diameter Female Loops 1/8 IP – Brass Finish

PACKAGED	BAGGED
Item #: 60243	Item #: 90085*
Pk Qty: 4	Pk Qty: 6



Loop, Female

Size: 1-3/8" Dia.
Thrd Size: 1/8 IP
Material: Brass Finish

PACKAGED	BAGGED
Item #: 60242	Item #: 90085*
Pk Qty: 1	Pk Qty: 6



Check Rings

Size: Assorted Sizes
Thrd Size: 1/8 IP Slip
Material: Brass Finish

PACKAGED	BAGGED
Item #: 60140	Item #:
Pk Qty: 12	Pk Qty:



Hex Nuts

Thrd Size: 1/8 IP
Material: Solid Brass

PACKAGED	BAGGED
Item #: 60169	Item #: 89756*
Pk Qty: 12	Pk Qty: 10



Hex Nuts

Thrd Size: 1/8 IP
Material: Steel

PACKAGED	BAGGED
Item #: 60170	Item #:
Pk Qty: 6	Pk Qty:



Hex Nuts, Assorted

Thrd Size: 8-32, 1/4-27, 1/8IP, 1/4 IP, 3/8 IP

Material: Steel

Kit Contents:
 4 – 8-32 Hex Nuts – Steel;
 2 – 1/4-27 Hex Nuts – Steel;
 6 – 1/8 IP Hex Nuts – Steel;
 2 – 1/4 IP Hex Nuts – Steel;
 2 – 3/8 IP Hex Nuts – Steel

PACKAGED	BAGGED
Item #: 60167	Item #:
Pk Qty: 16	Pk Qty:



Locknuts, Assorted

Thrd Size: 8-32, 1/4-27, 1/8 IP, 1/4 IP

Material: Solid Brass

Kit Contents:
 2 – 1/4-27 Round Knurled Locknuts – Solid Brass;
 2 – 1/8 IP Round Knurled Locknuts – Solid Brass;
 2 – 1/4 IP Round Knurled Locknuts – Solid Brass;
 4 – 1/8 IP Hex Nuts – Solid Brass;
 2 – 8-32 Battery Nuts – Solid Brass

PACKAGED	BAGGED
Item #: 60168	Item #:
Pk Qty: 12	Pk Qty:

Couplings & Reducers



Coupling

Thrd Size: 1/8 IP x 1/8 IP
Material: Solid Brass

PACKAGED	BAGGED
Item #: 60144 Pk Qty: 2	Item #: 88826* Pk Qty: 10



Coupling

Thrd Size: 1/4 IP x 1/4 IP
Material: Solid Brass

PACKAGED	BAGGED
Item #: 60149 Pk Qty: 1	Item #: 88842* Pk Qty: 6



Coupling

Thrd Size: 1/4 IP x 1/8 IP
Material: Solid Brass

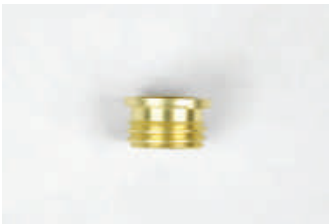
PACKAGED	BAGGED
Item #: 60150 Pk Qty: 1	Item #: 88835* Pk Qty: 6



Reducer

Thrd Size: 1/8 M x 1/4-27 F
Material: Brass Finish

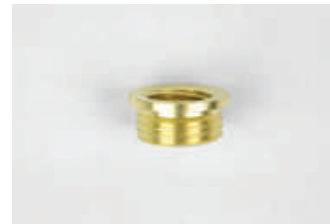
PACKAGED	BAGGED
Item #: 60145 Pk Qty: 1	Item #: 88798* Pk Qty: 4



Reducer

Thrd Size: 1/4 M x 1/8 F
Material: Brass Finish

PACKAGED	BAGGED
Item #: 60146 Pk Qty: 1	Item #: 88814* Pk Qty: 4



Reducer

Thrd Size: 3/8 M x 1/4 F
Material: Brass Finish

PACKAGED	BAGGED
Item #: 60147 Pk Qty: 1	Item #: 88820* Pk Qty: 4



Reducer

Thrd Size: 3/8 M x 1/8 F
Material: Brass Finish

PACKAGED	BAGGED
Item #: 60148 Pk Qty: 1	Item #: 88822* Pk Qty: 4



Reducer

Thrd Size: 3/8 F x 1/8 F
Material: Brass Finish

PACKAGED	BAGGED
Item #: 60151 Pk Qty: 1	Item #: 88931* Pk Qty: 10

*Reference Number

Shade Risers / Finials

LAMP PARTS



Shade Riser

Size: 1"
Material: Solid Brass
Thrd Size: 1/4-27 Thread

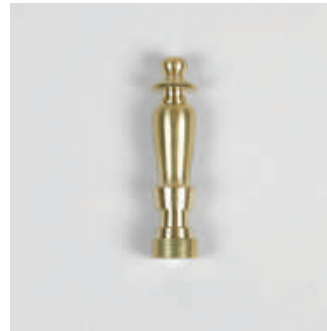
PACKAGED	BAGGED
Item #: 60118 Pk Qty: 1	Item #: 90124* Pk Qty: 6



Shade Riser

Size: 1-1/2"
Material: Solid Brass
Thrd Size: 1/4-27 Thread

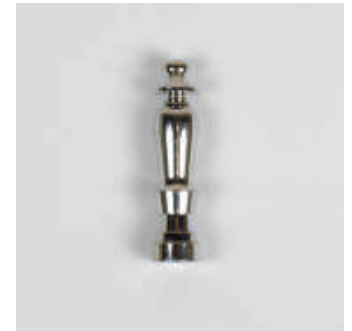
PACKAGED	BAGGED
Item #: 60119 Pk Qty: 1	Item #: 90126* Pk Qty: 6



Spindle Finial

Size: 2"
Material: Solid Brass
Thrd Size: 1/4-27 Thread

PACKAGED	BAGGED
Item #: 60100 Pk Qty: 1	Item #: 92146* Pk Qty: 5



Spindle Finial

Size: 2"
Material: Nickel Finish
Thrd Size: 1/4-27 Thread

PACKAGED	BAGGED
Item #: 60101 Pk Qty: 1	Item #: Pk Qty:



Pyramid Finial

Size: 1-1/4"
Material: Brass Finish
Thrd Size: 1/4-27 Thread

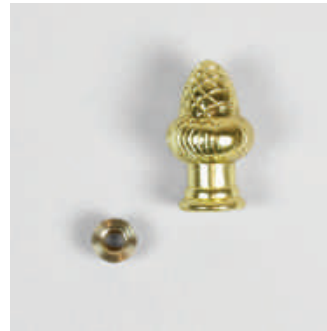
PACKAGED	BAGGED
Item #: 60102 Pk Qty: 2	Item #: 88426* Pk Qty: 5



Pyramid Finial

Size: 1-1/4"
Material: Nickel Finish
Thrd Size: 1/4-27 Thread

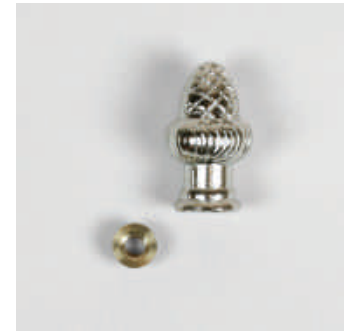
PACKAGED	BAGGED
Item #: 60103 Pk Qty: 2	Item #: Pk Qty:



Acorn Finial

Size: 1-1/2"
Material: Brass Finish
Thrd Size: with 1/8 M to 1/4-27 F Reducer

PACKAGED	BAGGED
Item #: 60104 Pk Qty: 1	Item #: Pk Qty:



Acorn Finial

Size: 1-1/2"
Material: Nickel Finish
Thrd Size: with 1/8 M to 1/4-27 F Reducer

PACKAGED	BAGGED
Item #: 60105 Pk Qty: 1	Item #: Pk Qty:

Finials

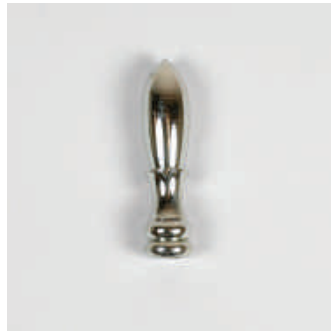
LAMP PARTS



Bullet Finial

Size: 2"
Material: Solid Brass
Thrd Size: 1/4-27 Thread

PACKAGED	BAGGED
Item #: 60106	Item #:
Pk Qty: 1	Pk Qty:



Bullet Finial

Size: 2"
Material: Nickel Finish
Thrd Size: 1/4-27 Thread

PACKAGED	BAGGED
Item #: 60107	Item #:
Pk Qty: 1	Pk Qty:



Top Hat Finial

Size: 1"
Material: Brass Finish
Thrd Size: 1/4-27 Thread

PACKAGED	BAGGED
Item #: 60109	Item #:
Pk Qty: 2	Pk Qty:



Top Hat Finial

Size: 1"
Material: Nickel Finish
Thrd Size: 1/4-27 Thread

PACKAGED	BAGGED
Item #: 60110	Item #:
Pk Qty: 2	Pk Qty:



Victorian Finial

Size: 3-1/2"
Material: Tiffany Antique Brass Finish
Thrd Size: 1/4-27 Thread

PACKAGED	BAGGED
Item #: 60111	Item #: 94005*
Pk Qty: 1	Pk Qty: 4



Glass Ball Finial

Size: 1-7/8"
Material: Glass Ball with Brass Finish Base
Thrd Size: 1/4-27 Thread

PACKAGED	BAGGED
Item #: 60112	Item #:
Pk Qty: 1	Pk Qty:

*Reference Number

Cords

LAMP PARTS



Lamp Cord

Size: 8' SPT-1
Material: White
Thrd Size 18 Gauge
 with Polarized Plug

PACKAGED	BAGGED
Item #: 60134 Pk Qty: 1	Item #: 90328* Pk Qty: 1



Lamp Cord

Size: 8' SPT-1
Material: Brown
Thrd Size 18 Gauge
 with Polarized Plug

PACKAGED	BAGGED
Item #: 60135 Pk Qty: 1	Item #: 90322* Pk Qty: 1



Lamp Cord

Size: 8' SPT-1
Material: Gold
Thrd Size 18 Gauge
 with Polarized Plug

PACKAGED	BAGGED
Item #: 60136 Pk Qty: 1	Item #: 90323* Pk Qty: 1



Lamp Cord

Size: 8' SPT-2
Material: Silver
Thrd Size 18 Gauge
 with Polarized Plug

PACKAGED	BAGGED
Item #: 60133 Pk Qty: 1	Item #: Pk Qty:



Lamp Cord with Clip-in Socket

Size: 6' SPT-1
Material: White
Thrd Size 18 Gauge
 with On/Off Switch,
 Candelabra Base
 Clip-in Socket (75
 Watts Maximum),
 and Polarized Plug

PACKAGED	BAGGED
Item #: 60138 Pk Qty: 1	Item #: Pk Qty:

*Reference Number

Harps

LAMP PARTS



Lamp Shade Adapter, Clip-on

Size:

Material: Brass Finish

PACKAGED	BAGGED
Item #: 60120	Item #: 88762*
Pk Qty: 1	Pk Qty: 1



Lamp Harp

Size: 8"

Material: Polished Brass

PACKAGED	BAGGED
Item #: 60121	Item #: 88652*
Pk Qty: 1	Pk Qty: 1



Lamp Harp

Size: 10"

Material: Polished Brass

PACKAGED	BAGGED
Item #: 60122	Item #: 88650*
Pk Qty: 1	Pk Qty: 1



Lamp Harp

Size: 12"

Material: Polished Brass

PACKAGED	BAGGED
Item #: 60123	Item #:
Pk Qty: 1	Pk Qty:



Lamp Harp

Size: 8"

Material: Brushed Pewter

PACKAGED	BAGGED
Item #: 60124	Item #:
Pk Qty: 1	Pk Qty:



Lamp Harp

Size: 10"

Material: Brushed Pewter

PACKAGED	BAGGED
Item #: 60125	Item #:
Pk Qty: 1	Pk Qty:



Lamp Harp

Size: 8"

Material: Antique Bronze

PACKAGED	BAGGED
Item #: 60127	Item #:
Pk Qty: 1	Pk Qty:



Lamp Harp

Size: 10"

Material: Antique Bronze

PACKAGED	BAGGED
Item #: 60128	Item #:
Pk Qty: 1	Pk Qty:

*Reference Number

Lamp Kits

LAMP PARTS



Make-A-Lamp Kit

Size: Asst. Bottle Adapters

Material:

Kit Contents:

- 1 – 8' SPT-1 Lamp Cord (18 Gauge) with Polarized Plug – White;
- 1 – Push-Through Socket (Rated: 660W-250V) – Brass Finish;
- 3 – 3 Sizes of Bottle Adapters;
- 1 – Lamp Nipple;
- 1 – Check Ring;
- 1 – Lock Nut

PACKAGED	BAGGED
Item #: 60131	Item #:
Pk Qty: 1 Kit	Pk Qty:



Lamp Kit

Size: 10" Harp

Material: Polished Brass Harp

Kit Contents:

- 1 – 10" Lamp Harp – Polished Brass;
- 1 – 8' SPT-1 Lamp Cord (18 Gauge) with Polarized Plug – Brown;
- 1 – Push-Through Socket (Rated: 660W-250V) – Brass Finish;
- 1 – 1" Finial 1/4-27 Thread – Brass Finish;
- 1 – Lamp Nipple;
- 1 – Coupling;
- 1 – Lock Nut

PACKAGED	BAGGED
Item #: 60132	Item #:
Pk Qty: 1 Kit	Pk Qty:



Lamp Kit

Size: 10" Harp

Material: Brushed Pewter Harp

Kit Contents:

- 1 – 10" Lamp Harp – Brushed Pewter;
- 1 – 8' SPT-1 Lamp Cord (18 Gauge) with Polarized Plug – Silver;
- 1 – Push-Through Socket (Rated: 660W-250V) – Nickel Finish;
- 1 – 1" Finial 1/4-27 Thread – Nickel Finish;
- 1 – Lamp Nipple;
- 1 – Coupling;
- 1 – Lock Nut

PACKAGED	BAGGED
Item #: 60139	Item #:
Pk Qty: 1 Kit	Pk Qty:

Nipples & Pipes



Lamp Nipple

Material: Zinc Plated
Thread Size: 1/8 IP

Size	PACKAGED		BAGGED	
	Item #	Pk Qty	Item #	Pk Qty
3"	60162	1	88721*	10
4"	60163	1	88727*	6
5"	60171	1	88496*	10
6"	60164	1	88498*	5
8"	60172	1	89305*	5



Lamp Nipple

Material: Zinc Plated
Thread Size: 1/4 IP

Size	PACKAGED		BAGGED	
	Item #	Pk Qty	Item #	Pk Qty
2-1/2"	60173	1	94181*	10
3"	60174	1	94182*	10
3-1/2"	60175	1	94183*	6



Lamp Pipe

Thread Size: 1/8 IP Fully Threaded

Size	Material	PACKAGED		BAGGED	
		Item #	Pk Qty	Item #	Pk Qty
30"	Brass Plated	60165	1	88708*	



Lamp Nipples Assortment

Size: Assorted Lengths
Material: Zinc Plated
Thrd Size: 1/8 IP
Kit Contents:
2 – 1/2" Lamp Nipples 1/8 IP
2 – 1" Lamp Nipples 1/8 IP
2 – 1-1/2" Lamp Nipples 1/8 IP
2 – 2" Lamp Nipples 1/8 IP

PACKAGED	BAGGED
Item #: 60160	Item #:
Pk Qty: 8	Pk Qty:



Lamp Nipples Assortment

Size: Assorted Lengths
Material: Zinc Plated
Thrd Size: 1/4 IP
Kit Contents:
1 – 3/4" Lamp Nipple 1/4 IP
1 – 1-1/2" Lamp Nipple 1/4 IP
1 – 2" Lamp Nipple 1/4 IP

PACKAGED	BAGGED
Item #: 60161	Item #:
Pk Qty: 3	Pk Qty:

*Reference Number

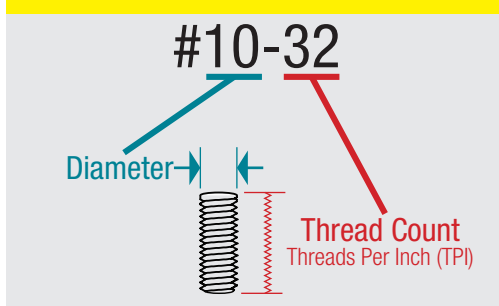
Thread Data Reference

Thread Data Reference

LAMP PARTS

		Thread Size	Approximate Fraction Diameter	Exact Diameter	Applications
Solid Tube		#4-36	3/32 in	0.106 in 0.111 in	Socket Knob Threads
		#6-32	1/8 in	0.132 in 0.137 in	Socket Knob Threads & Switchplates
		#8-32	5/32 in	0.158 in 0.163 in	Lockup Thread for Lantern Assemblies/ Crossbars & Canopies
		#10-24 (course)	3/16 in	0.184 in 0.189 in	Lockup Thread (stronger than 6-32 & 8-32)
		#10-32 (fine)			
		1/4-20 (course)	1/4 in	0.240 in 0.245 in	Trophy Products & Drawer Pulls
1/4-27 (fine)		Lamp Harp Posts & Finials			
Hollow Tube		1/8 IP (1/8-27 N.P.S.M.)	3/8 in	0.380 in 0.390 in	Table Lamps & Lamp Sockets
		1/4 IP (1/4-18 N.P.S.M.)	1/2 in	0.510 in 0.515 in	Floor Lamps & Residential Ceiling Fixtures
		3/8 IP (3/8-18 N.P.S.M.)	5/8 in	0.648 in 0.658 in	Floor Lamps & Commercial Ceiling Fixtures

How Thread Size is Notated:



Please Note:

For solid tubes, diameters under 1/4" are given as numbers (e.g. #12) instead of inches, in order of increasing size.

For hollow lamp pipes, diameters are notated as IP (Iron Pipe) instead of inches. IP is equivalent to NPSM (National Pipe Straight Mechanical), as noted in chart.

CONTENTS

Candelabra Base Sockets	E22-E23
Miniature Base Sockets	E23
Fluorescent Lamp Holders	E24-E25
Halogen Sockets	E25
Phenolic Sockets	E26
Phenolic Snap-In Sockets	E27
Attach-On Sockets	E27
Metallic Sockets- Brass	E28
Metallic Sockets- Nickel	E29
Porcelain Sockets	E30
Socket Extenders & Reducers	E31
Socket Keys & Knobs	E31
Reference	
Socket Base Size Chart	E32



Candelabra Base Sockets

SOCKETS



Candelabra Base Socket

Base: Candelabra Base (E12)
Size: 1-9/16" Long with 1/8 IP Hickey
Material: Phenolic/Paper Liner
Function:
Ratings: 75W, 125V
Terminals: Screw Terminals

PACKAGED	BAGGED
Item #: 60474	Item #: 90308*
Pk Qty: 1	Pk Qty: 1



Candelabra Base Socket

Base: Candelabra Base (E12)
Size: 2" Long with 1/8 IP Hickey
Material: Phenolic/Paper Liner
Function: Keyless
Ratings: 75W, 125V
Terminals: Screw Terminals

PACKAGED	BAGGED
Item #: 60229	Item #:
Pk Qty: 2	Pk Qty:



Candelabra Base Socket

Base: Candelabra Base (E12)
Size: Adjustable 3-1/4" – 4-3/4" Long with 1/8 IP Hickey
Material: Phenolic/Paper Liner
Function: Keyless
Ratings: 75W, 125V
Terminals: Screw Terminals

PACKAGED	BAGGED
Item #: 60228	Item #: 90310*
Pk Qty: 2	Pk Qty: 1



Candelabra Base Socket

Base: Candelabra Base (E12)
Size: 1-23/32" Long with 1/8 IP Hickey
Material: Phenolic
Ratings: 75W, 125V
Terminals: Wire Leads 6"- 18AWG

PACKAGED	BAGGED
Item #: 60470	Item #:
Pk Qty: 1	Pk Qty:



Candelabra Base Socket

Base: Candelabra Base (E12)
Size: 3-1/16" Long with 1/8 IP Hickey
Material: Phenolic
Ratings: 75W, 125V
Terminals: Wire Leads 6"-18AWG

PACKAGED	BAGGED
Item #: 60472	Item #:
Pk Qty: 1	Pk Qty:



Candelabra Base Socket

Base: Candelabra Base (E12)
Size: 3-13/16" Long with 1/8 IP Hickey
Material: Phenolic
Ratings: 75W, 125V
Terminals: Wire Leads 6" 18AWG

PACKAGED	BAGGED
Item #: 60471	Item #: 88855*
Pk Qty: 1	Pk Qty: 1



Candelabra Base Socket

Base: Candelabra Base (E12)
Size: 1-7/32" Long
Material: Phenolic W/Phenolic Ring
Ratings: 75W, 125V
Terminals: Wire Leads 6" 18AWG

PACKAGED	BAGGED
Item #: 60473	Item #:
Pk Qty: 1	Pk Qty:

*Reference Number

Candelabra / Miniature Base Sockets



Candelabra Base Socket

Base: Candelabra Base (E12)
Material: Phenolic/Spring Clips
Ratings: 75W, 125V
Terminals: Wire Leads 24" 18AWG



Pigtail Socket

Base: Candelabra Base (E12)
Material: Phenolic
Ratings: 75W, 125V
Terminals: Wire Leads 24" 18AWG



Pigtail Socket

Base: Miniature Base (E10)
Material: Phenolic
Ratings: 75W, 125V
Terminals: Wire Leads 6" 20AWG

PACKAGED	BAGGED
Item #: 60475	Item #: 88768*
Pk Qty: 1	Pk Qty: 1

PACKAGED	BAGGED
Item #: 60563	Item #: 89201*
Pk Qty: 1	Pk Qty: 1

PACKAGED	BAGGED
Item #: 60565	Item #:
Pk Qty: 1	Pk Qty:

SOCKETS

*Reference Number

Fluorescent Lamp Holders

SOCKETS



Fluorescent Lamp Holder

Contacts: Recessed Double Contact R17d Fixed End
Profile: Low Profile
Function: Non-Shunted Pedestal
Ratings: 660W, 1000V
Terminals: Quick Wire

PACKAGED	BAGGED
Item #: 60491	Item #:
Pk Qty: 1	Pk Qty:



Fluorescent Lamp Holder

Contacts: Recessed Double Contact R17d Plunger End
Profile: Low Profile
Function: Non-Shunted Pedestal
Ratings: 660W, 1000V
Terminals: Quick Wire

PACKAGED	BAGGED
Item #: 60494	Item #:
Pk Qty: 1	Pk Qty:



Fluorescent Lamp Holder

Base: Medium T-8 & T-12
Contacts: Bi-Pin G13
Function: Non-Shunted Pedestal
Ratings: 660W, 600V
Terminals: Screw Terminals/ Screw Mount

PACKAGED	BAGGED
Item #: 60497	Item #: 89518*
Pk Qty: 1	Pk Qty: 1



Fluorescent Lamp Holder

Base: Medium T-8
Contacts: Bi-Pin G13
Profile: Medium Profile
Function: Non-Shunted
Ratings: 660W, 600V
Terminals: Quick Wire

PACKAGED	BAGGED
Item #: 60492	Item #: 88478*
Pk Qty: 1	Pk Qty: 1



Fluorescent Lamp Holder

Base: Medium T-8
Contacts: Bi-Pin G13
Profile: Tall Profile
Function: Non-Shunted
Ratings: 660W, 600V
Terminals: Quick Wire

PACKAGED	BAGGED
Item #: 60496	Item #: 88480*
Pk Qty: 1	Pk Qty: 1



Fluorescent Lamp Holder

Base: Medium T-8
Contacts: Bi-Pin G13
Profile: Medium Profile
Function: Shunted
Ratings: 660W, 600V
Terminals: Quick Wire

PACKAGED	BAGGED
Item #: 60487	Item #:
Pk Qty: 1	Pk Qty:



Fluorescent Lamp Holder

Base: Medium T-8
Contacts: Bi-Pin G13
Profile: Tall Profile
Function: Shunted
Ratings: 660W, 600V
Terminals: Quick Wire

PACKAGED	BAGGED
Item #: 60488	Item #:
Pk Qty: 1	Pk Qty:

*Reference Number

Fluorescent Lamp Holders / Halogen Sockets

SOCKETS



Fluorescent Lamp Holder

Base: Slimline
Contacts: Single Pin Fa8 Fixed End
Function: Non-Shunted Pedestal
Ratings: 660W, 1000V
Terminals: Quick Wire

PACKAGED	BAGGED
Item #: 60490	Item #: 90355*
Pk Qty: 1	Pk Qty: 1



Fluorescent Lamp Holder

Base: Slimline
Contacts: Single Pin Fa8 Plunger End
Function: Pedestal
Ratings: 660W, 1000V
Terminals: Quick Wire

PACKAGED	BAGGED
Item #: 60493	Item #: 90357*
Pk Qty: 1	Pk Qty: 1



Halogen Socket

Base: Mini Candelabra (E11)
Size:
Material: Porcelain
Ratings: 1000W, 250V
Terminals: Wire Leads 6" Wire

PACKAGED	BAGGED
Item #: 60517	Item #: 88184*
Pk Qty: 1	Pk Qty: 1



Halogen Socket

Base: GX5.3
Size: MR16 Bi-Pin
Material: Porcelain
Ratings: 100W, 250V
Terminals: Wire Leads 6" Wire

PACKAGED	BAGGED
Item #: 60518	Item #:
Pk Qty: 1	Pk Qty:



Halogen Socket

Base: R7S
Size: 118mm Double Ended
Material: Porcelain
Ratings: 500W, 250V
Terminals: Wire Leads 6" Wire

PACKAGED	BAGGED
Item #: 60520	Item #: 88180*
Pk Qty: 1	Pk Qty: 1

*Reference Number

Phenolic Sockets

SOCKETS



Phenolic Socket

Base: Medium Base (E26)
Size: With 1/8 IP Hickey
Material: Phenolic/Metal/Paper Liner
Function: On/Off Turn Knob
Ratings: 250W, 250V
Terminals: Screw Terminals

PACKAGED	BAGGED
Item #: 60530	Item #: 88152*
Pk Qty: 1	Pk Qty: 1



Phenolic Socket

Base: Medium Base (E26)
Size:
Material: Phenolic
Function: On/Off Bottom Turn Knob
Ratings: 660W, 250V
Terminals:

PACKAGED	BAGGED
Item #: 60536	Item #: 90032*
Pk Qty: 1	Pk Qty: 1



Phenolic Socket

Base: Medium Base (E26)
Size: Smooth Top
Material: Phenolic
Function: 3-Way Pull Chain
Ratings: 250W, 250V
Terminals:

PACKAGED	BAGGED
Item #: 60532	Item #: 90404*
Pk Qty: 1	Pk Qty: 1



Phenolic Socket

Base: Medium Base (E26)
Size: 1/2 Threaded Top
Material: Phenolic
Function: On/Off Pull Chain
Ratings: 250W, 250V
Terminals:

PACKAGED	BAGGED
Item #: 60534	Item #:
Pk Qty: 1	Pk Qty:



Phenolic Socket

Base: Medium Base (E26)
Size: 1/2 Threaded Top
Material: Phenolic
Function: On/Off Push Through
Ratings: 660W, 250V
Terminals:

PACKAGED	BAGGED
Item #: 60535	Item #:
Pk Qty: 1	Pk Qty:



Phenolic Socket

Base: Medium Base (E26)
Size: Threaded Top With Phenolic Ring
Material: Phenolic
Function: 3-Way Turn Knob
Ratings: 250W, 250V
Terminals:

PACKAGED	BAGGED
Item #: 60533	Item #: 90394*
Pk Qty: 1	Pk Qty: 1



Phenolic Socket

Base: Medium Base (E26)
Size: 1/2 Threaded Top
Material: Phenolic
Function: On/Off Turn Knob
Ratings: 250W, 250V
Terminals:

PACKAGED	BAGGED
Item #: 60545	Item #:
Pk Qty: 1	Pk Qty:

*Reference Number

Phenolic Snap-In Sockets / Attach-On Sockets

SOCKETS



Snap-In Socket

Base: Medium Base (E26)
Size: with L Bracket
Material: Phenolic
Function:
Ratings: 660W, 250V
Terminals: Wire Leads 6" 18AWG

PACKAGED	BAGGED
Item #: 60537 Pk Qty: 1	Item #: 88539* Pk Qty: 1



Snap-In Socket

Base: Medium Base (E26)
Size: Single Spring Clip, Ext. 3/4"
Material: Phenolic
Function:
Ratings: 660W, 250V
Terminals: Wire Leads 6" 18AWG

PACKAGED	BAGGED
Item #: 60540 Pk Qty: 1	Item #: 88933* Pk Qty: 1



Snap-In Socket

Base: Medium Base (E26)
Size: Single Spring Clip, Ext. 17.2mm
Material: Phenolic
Function:
Ratings: 660W, 250V
Terminals: Wire Leads 6" 18AWG

PACKAGED	BAGGED
Item #: 60543 Pk Qty: 1	Item #: 88934* Pk Qty: 1



Snap-In Socket

Base: Medium Base (E26)
Size: Double Spring Clip
Material: Phenolic
Function:
Ratings: 660W, 250V
Terminals: Wire Leads 6" 18AWG

PACKAGED	BAGGED
Item #: 60541 Pk Qty: 1	Item #: 88824* Pk Qty: 1



Snap-In Socket

Base: Medium Base (E26)
Size: U-Clip
Material: Phenolic
Function:
Ratings: 660W, 250V
Terminals: Wire Leads 6" 18AWG

PACKAGED	BAGGED
Item #: 60538 Pk Qty: 1	Item #: 88832* Pk Qty: 1



Snap-In Socket

Base: Medium Base (E26)
Size: U-Clip (Shallow Mt.)
Material: Phenolic
Function:
Ratings: 660W, 250V
Terminals: Wire Leads 6" 18AWG

PACKAGED	BAGGED
Item #: 60539 Pk Qty: 1	Item #: 88932* Pk Qty: 1



Attach-On Socket

Base: Medium Base (E26)
Size: 1/4 Turn Twist Top
Material: Phenolic
Ratings: 660W, 250V
Terminals: Insulation Displacement Terminals (Teeth)

PACKAGED	BAGGED
Item #: 60449 Pk Qty: 1	Item #: 89172* Pk Qty: 1

*Reference Number

Metallic Sockets- Brass

SOCKETS



Brass Socket

Base: Medium Base (E26)
Material: Brass
Function: Keyless
Ratings: 660W, 250V
Terminals:

PACKAGED	BAGGED
Item #: 60406	Item #: 89976*
Pk Qty: 1	Pk Qty: 1



Brass Socket

Base: Medium Base (E26)
Material: Brass
Function: On/Off Push-Through
Ratings: 660W, 250V
Terminals:

PACKAGED	BAGGED
Item #: 60407	Item #: 90048*
Pk Qty: 1	Pk Qty: 1



Brass Socket

Base: Medium Base (E26)
Material: Brass
Function: 3-Way Turn Knob
Ratings: 250W, 250V
Terminals:

PACKAGED	BAGGED
Item #: 60409	Item #: 92154*
Pk Qty: 1	Pk Qty: 1



Brass Socket

Base: Medium Base (E26)
Material: Brass
Function: On/Off Turn Knob
Ratings: 250W, 250V
Terminals:

PACKAGED	BAGGED
Item #: 60408	Item #:
Pk Qty: 1	Pk Qty:



Brass Socket

Base: Medium Base (E26)
Material: Brass
Function: 3-Way Pull Chain
Ratings: 250W, 250V
Terminals:

PACKAGED	BAGGED
Item #: 60411	Item #: 90114*
Pk Qty: 1	Pk Qty: 1



Brass Socket

Base: Medium Base (E26)
Material: Brass
Function: On/Off Pull Chain
Ratings: 250W, 250V
Terminals:

PACKAGED	BAGGED
Item #: 60410	Item #:
Pk Qty: 1	Pk Qty:

*Reference Number

Metallic Sockets- Nickel

SOCKETS



Nickel Socket

Base: Medium Base (E26)
Material: Nickel
Function: Keyless
Ratings: 660W, 250V
Terminals:

PACKAGED	BAGGED
Item #: 60400	Item #:
Pk Qty: 1	Pk Qty:



Nickel Socket

Base: Medium Base (E26)
Material: Nickel
Function: On/Off Push-Through
Ratings: 660W, 250V
Terminals:

PACKAGED	BAGGED
Item #: 60401	Item #:
Pk Qty: 1	Pk Qty:



Nickel Socket

Base: Medium Base (E26)
Material: Nickel
Function: 3-Way Turn Knob
Ratings: 250W, 250V
Terminals:

PACKAGED	BAGGED
Item #: 60403	Item #:
Pk Qty: 1	Pk Qty:



Nickel Socket

Base: Medium Base (E26)
Material: Nickel
Function: On/Off Turn Knob
Ratings: 250W, 250V
Terminals:

PACKAGED	BAGGED
Item #: 60402	Item #:
Pk Qty: 1	Pk Qty:



Nickel Socket

Base: Medium Base (E26)
Material: Nickel
Function: 3-Way Pull Chain
Ratings: 250W, 250V
Terminals:

PACKAGED	BAGGED
Item #: 60405	Item #:
Pk Qty: 1	Pk Qty:



Nickel Socket

Base: Medium Base (E26)
Material: Nickel
Function: On/Off Pull Chain
Ratings: 250W, 250V
Terminals:

PACKAGED	BAGGED
Item #: 60404	Item #:
Pk Qty: 1	Pk Qty:

*Reference Number

Porcelain Sockets

SOCKETS



Porcelain Socket

Base: Medium Base (E26)
Size: 2-Piece Ring
Material: Porcelain
Function:
Ratings: 660W, 250V
Terminals: Enclosed Screw Terminals

PACKAGED	BAGGED
Item #: 60575 Pk Qty: 1	Item #: 88819* Pk Qty: 1



Porcelain Socket

Base: Medium Base (E26)
Size: 2-Piece Ring
Material: Porcelain
Function: Keyless
Ratings: 660W, 250V
Terminals: Screw Terminals

PACKAGED	BAGGED
Item #: 60576 Pk Qty: 1	Item #: 89221* Pk Qty: 1



Porcelain Socket

Base: Medium Base (E26)
Size: 2-Piece Ring
Material: Porcelain
Function:
Ratings: 660W, 250V
Terminals: Wire Leads 8" 18AWG

PACKAGED	BAGGED
Item #: 60577 Pk Qty: 1	Item #: 89195* Pk Qty: 1



Porcelain Socket

Base: Medium Base (E26)
Size:
Material: Porcelain
Function: Bottom Turn Knob
Ratings: 250W, 250V
Terminals:

PACKAGED	BAGGED
Item #: 60578 Pk Qty: 1	Item #: Pk Qty:



Porcelain Socket

Base: Medium Base (E26)
Size: with Side Outlet & Bushing
Material: Porcelain
Function:
Ratings: 660W, 660V
Terminals:

PACKAGED	BAGGED
Item #: 60579 Pk Qty: 1	Item #: Pk Qty:



Porcelain Socket

Base: Medium Base (E26)
Size: Twin w/Single Bushing Strap
Material: Porcelain
Function:
Ratings: 660W, 600V
Terminals:

PACKAGED	BAGGED
Item #: 60580 Pk Qty: 1	Item #: Pk Qty:



Porcelain Socket

Base: Medium Base (E26)
Size: with Metal 1/8 IP Cap
Material: Porcelain
Function: Keyless
Ratings: 660W, 250V
Terminals:

PACKAGED	BAGGED
Item #: 60582 Pk Qty: 1	Item #: 88090* Pk Qty: 1

*Reference Number

Socket Extenders & Reducers / Socket Keys & Knobs



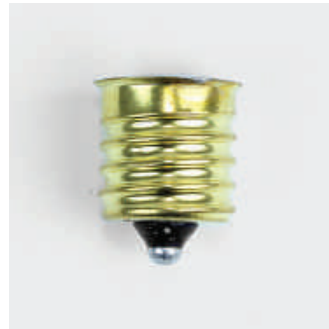
Socket Extender

Base: Medium to Medium Base (E26-E26)
Size: Ext. 1"
Material: Phenolic
Ratings: 660W, 250V



Socket Extender

Base: Medium to Medium Base (E26-E26)
Size: Ext. 1-1/4"
Material: Porcelain
Ratings: 660W, 250V



Socket Reducer

Base: Intermediate to Candelabra Base (E17-E12)
Ratings: 75W, 120V



Socket Reducer

Base: French to Candelabra Base (E14-E12)
Ratings: 75W, 120V

SOCKETS

PACKAGED	BAGGED
Item #: 60421	Item #: 88806*
Pk Qty: 1	Pk Qty: 1

PACKAGED	BAGGED
Item #: 60422	Item #: 88763*
Pk Qty: 1	Pk Qty: 1

PACKAGED	BAGGED
Item #: 60424	Item #: 93808*
Pk Qty: 1	Pk Qty: 1

PACKAGED	BAGGED
Item #: 60427	Item #: 88943*
Pk Qty: 1	Pk Qty: 1



Socket Keys

Size: with 1/2" extensions
 4-36F x 4-36M
Material: Brass Finish

PACKAGED	BAGGED
Item #: 60142	Item #: 88833*
Pk Qty: 2	Pk Qty: 6



Socket Knobs

Size: with 1/2" extensions
 4-36F x 4-36M
Material: Black Plastic

PACKAGED	BAGGED
Item #: 60143	Item #: 88622*
Pk Qty: 2	Pk Qty: 12

*Reference Number

Socket Base Size Chart

Socket Base Size Chart

Base Number	Base Type	Diameter
E5	Midget Screw	0.20" (5 mm)
E10	Miniature Screw	0.39" (10 mm)
E11	Mini-Candelabra Screw	0.43" (11 mm)
E12	Candelabra Screw	0.47" (12 mm)
E14	French Screw	0.55" (14 mm)
E17	Intermediate Screw	0.67" (17 mm)
E26	Medium Screw	1.02" (26 mm)
E40	Mogul Screw	1.57" (40 mm)

CONTENTS

Momentary Switches.....	E34-E35
Snap-In Outlets.....	E36
Pilot Light.....	E36
Slide Switches.....	E37
Rotary Switches.....	E38-E39
Pull Chain Switches.....	E40
Feed-Through Switches.....	E41
Push Button Switches.....	E42-E43
Rocker Switches.....	E44-E45
Toggle Switches.....	E46-E49
Accessories.....	E50
Reference	
Switch Types.....	E51
Switch Terminology.....	E52



SWITCHES



Momentary Switches

SWITCHES



Momentary Snap Action

Apps: Motor
Details: Plunger-Short
Poles:
Function: Normally On or Normally Off
Ratings: 18A-125VAC;
 15A-250VAC;
 3/4HP 125/250VAC
Terminals: 3 Tabs

PACKAGED	BAGGED
Item #: 61030	Item #: 88703*
Pk Qty: 1	Pk Qty: 1



Momentary Snap Action

Apps: Motor
Details: Plunger-Long
Poles: Single Pole, Single Throw
Function: Normally On or Normally Off
Ratings: 21A-125/250VAC;
 1-1/2HP 125VAC;
 2HP 250VAC
Terminals: 3 Tabs

PACKAGED	BAGGED
Item #: 61031	Item #: 88699*
Pk Qty: 1	Pk Qty: 1



Momentary Switch

Apps: Household Appliance
Details: Plunger
Poles: Single Pole, Single Throw
Function: Normally Off
Ratings: 1/4A-250V;
 3/4A-125V
Terminals: 2 Screws

PACKAGED	BAGGED
Item #: 61001	Item #:
Pk Qty: 1	Pk Qty:



Momentary Switch

Apps: Household Appliance
Details: Plunger
Poles: Single Pole, Single Throw
Function: Normally On
Ratings: 1/4A-250V;
 3/4A-125V
Terminals: 2 Screw

PACKAGED	BAGGED
Item #: 61037	Item #: 90283*
Pk Qty: 1	Pk Qty: 1



Momentary Switch

Apps: Refrigerator
Details: Plunger-Long, Rectangle
Poles:
Function: Normally On or Normally Off
Ratings: 12A-250VAC;
 16A-125VAC;
 1HP 250/125VAC
Terminals: 3 Tabs

PACKAGED	BAGGED
Item #: 61010	Item #: 88701*
Pk Qty: 1	Pk Qty: 1



Momentary Switch

Apps: Refrigerator
Details: Plunger-Short, Rectangle
Poles:
Function: Normally On or Normally Off
Ratings: 12A-250VAC;
 16A-125VAC;
 1HP 125/250VAC
Terminals: 3 Tabs

PACKAGED	BAGGED
Item #: 61027	Item #: 89217*
Pk Qty: 1	Pk Qty: 1



Momentary Switch

Apps: Refrigerator
Details: Plunger, Round
Poles: Single Pole, Single Throw
Function: Normally On
Ratings: 5A-125VAC;
 2.5A-250VAC
Terminals: 2 Tabs

PACKAGED	BAGGED
Item #: 61011	Item #: 88639*
Pk Qty: 1	Pk Qty: 1



Momentary Switch

Apps: Refrigerator
Details: Plunger, Round
Poles: Single Pole, Single Throw
Function: Normally On
Ratings: 0.2A-250VAC;
 25T125 5E4 (50,000 operations)
Terminals: 2 Tabs

PACKAGED	BAGGED
Item #: 61012	Item #: 88640*
Pk Qty: 1	Pk Qty: 1

*Reference Number

Momentary Switches



Momentary Switch

Apps: Refrigerator
Details: Plunger, Round
Poles: Single Pole, Single Throw
Function: Normally On
Ratings: 1/4A-250V;
 3/4A-125V;
 1A-125VAC
Terminals: 2 Tabs

PACKAGED	BAGGED
Item #: 61029	Item #: 90106*
Pk Qty: 1	Pk Qty: 1



Momentary Switch

Apps: Refrigerator
Details: Plunger, Square
Poles: Single Pole, Single Throw
Function: Normally Off
Ratings: 2A-125VAC
Terminals: 2 Tabs

PACKAGED	BAGGED
Item #: 61028	Item #:
Pk Qty: 1	Pk Qty:



Momentary Switch

Apps: Refrigerator
Details: Rocker, Square
Poles: Single Pole, Single Throw
Function: Normally Off
Ratings: 5A-250VAC
Terminals: 2 Tabs

PACKAGED	BAGGED
Item #: 61008	Item #: 92193*
Pk Qty: 1	Pk Qty: 1



Momentary Switch

Apps: Refrigerator
Details: Rocker, Square
Poles: Single Pole, Single Throw
Function: Normally On
Ratings: 5A-250VAC
Terminals: 2 Tabs

PACKAGED	BAGGED
Item #: 61013	Item #: 92195*
Pk Qty: 1	Pk Qty: 1

SWITCHES

*Reference Number

Snap-In Outlets / Pilot Light



Outlet

Apps: Stove
Details: 2 Prong, Black
Poles: NA
Function: NA
Ratings: 15A-125V
Terminals: 2 Wires 16AWG

PACKAGED	BAGGED
Item #: 61014	Item #: 89176*
Pk Qty: 1	Pk Qty: 1



Outlet

Apps: Stove
Details: 2 Prong, White
Poles: NA
Function: NA
Ratings: 15A-125V
Terminals: 2 Wires 16AWG

PACKAGED	BAGGED
Item #: 61015	Item #: 89178*
Pk Qty: 1	Pk Qty: 1



Outlet

Apps: Stove
Details: 3 Prong, Black
Poles: NA
Function: NA
Ratings: 15A-125V
Terminals: 3 Wires 14AWG

PACKAGED	BAGGED
Item #: 61016	Item #: 88608*
Pk Qty: 1	Pk Qty: 1



Outlet

Apps: Stove
Details: 3 Prong, White
Poles: NA
Function: NA
Ratings: 15A-125V
Terminals: 3 Wires 14AWG

PACKAGED	BAGGED
Item #: 61017	Item #: 88609*
Pk Qty: 1	Pk Qty: 1

SWITCHES



Snap-In Pilot Light

Apps: power indicator
Details: Red Lens, High Profile
Poles: NA
Function: NA
Ratings: 125 Volt, .3 Watt
Terminals: 2 Wires 6" 18AWG

PACKAGED	BAGGED
Item #: 61006	Item #: 92170*
Pk Qty: 1	Pk Qty: 1

*Reference Number

Slide Switches



Slide Switch

Apps: Vacuum Cleaner
Details:
Poles: Single Pole, Single Throw
Function: On/Off
Ratings: 3A-250VAC; 6A-125VAC
Terminals: 2 Tabs

PACKAGED	BAGGED
Item #: 61023 Pk Qty: 1	Item #: 92899* Pk Qty: 1

Slide Switch

Apps: Vacuum Cleaner
Details:
Poles: Single Pole, Double Throw
Function: On/Off
Ratings: 3A-250VAC; 6A-125VAC
Terminals: 3 Tabs

PACKAGED	BAGGED
Item #: 61022 Pk Qty: 1	Item #: Pk Qty:

Slide Switch- Momentary

Apps: Vacuum Cleaner
Details: Spring Return
Poles: Single Pole, Double Throw
Function: On/(On)
Ratings: 3A-125VAC; 1A-125VDC
Terminals: 3 Tabs

PACKAGED	BAGGED
Item #: 61021 Pk Qty: 1	Item #: Pk Qty:

Slide Switch

Apps: Vacuum Cleaner
Details:
Poles: Double Pole, Double Throw
Function: On/On (2 position)
Ratings: 3A-250VAC; 6A-125VAC
Terminals: 6 Tabs

PACKAGED	BAGGED
Item #: 61020 Pk Qty: 1	Item #: Pk Qty:

SWITCHES

*Reference Number

Rotary Switches

SWITCHES



Rotary Switch

Apps: Lamp
Details: Black Hat Canopy
Poles: Single Pole, Single Throw
Function: On/Off
Ratings: 1.5A- 250V;
 3A-125V;
 1A-125VT;
 3A-125VL;
 5A-15VT
Terminals: 2 Wires 6" 18AWG

PACKAGED	BAGGED
Item #: 61216 Pk Qty: 1	Item #: 88700* Pk Qty: 1



Rotary Switch

Apps: Lamp
Details: White Hat Canopy
Poles: Single Pole, Single Throw
Function: On/Off
Ratings: 1.5A- 250V;
 3A-125V;
 1A-125VT;
 3A-125VL;
 5A-15VT
Terminals: 2 Wires 6" 18AWG

PACKAGED	BAGGED
Item #: 61217 Pk Qty: 1	Item #: 88702* Pk Qty: 1



Rotary Switch

Apps: Lamp
Details: Brass Knob; Long Shank
Poles: Single Pole, Single Throw
Function: On/Off
Ratings: 3A-250VAC;
 6A-125VAC;
 6A-125VL
Terminals: 2 Wires 6" 18AWG

PACKAGED	BAGGED
Item #: 61220 Pk Qty: 1	Item #: 88746* Pk Qty: 1



Rotary Switch

Apps: Lamp
Details: Brass Knob
Poles: 2-Circuit, 3-Way, 4 Position
Function: Off/L-1/L-2/L 1-2
Ratings: 3A-250VAC;
 6A-125VAC;
 3A-125VL
Terminals: 3 Wires 6" 18AWG

PACKAGED	BAGGED
Item #: 61215 Pk Qty: 1	Item #: 88746* Pk Qty: 1



Rotary Switch

Apps: Lamp
Details: Brass Knob
Poles: 2-Circuit, 3-Way, 4 Position
Function: Off/L-1/L-2/L 1-2
Ratings: 3A-250VAC;
 6A-125VAC;
 3A-125VL
Terminals: 3 Wires 6" 18AWG

PACKAGED	BAGGED
Item #: 61206 Pk Qty: 1	Item #: 90363* Pk Qty: 1



Rotary Switch

Apps: Lamp
Details: Brass Knob; Long Shank
Poles: 2-Circuit, 3-Way, 4 Position
Function: Off/L-1/L-2/L 1-2
Ratings: 3A-250VAC;
 6A-125VAC;
 3A-125VL
Terminals: 3 Wires 6" 18AWG

PACKAGED	BAGGED
Item #: 61214 Pk Qty: 1	Item #: 88738* Pk Qty: 1



Rotary Switch

Apps: Household Appliance
Details: Black Plastic Knob
Poles: 2 Speed; Single Pole, Double Throw
Function: Off/On/On
Ratings: 4A-125VAC;
 2A-250VAC;
 1A-125VDC
Terminals: 3 Tabs

PACKAGED	BAGGED
Item #: 61033 Pk Qty: 1	Item #: 88738* Pk Qty: 1



Rotary Switch

Apps: Household Appliance
Details: Black Plastic Knob
Poles: 3 Speed; Single Pole, Triple Throw
Function: Off/On/On/On
Ratings: 4A-125VAC;
 2A-250VAC;
 1A-125VDC
Terminals: 4 Tabs

PACKAGED	BAGGED
Item #: 61034 Pk Qty: 1	Item #: 88738* Pk Qty: 1

*Reference Number

Rotary Switches



Rotary Switch

Apps: Household Appliance
Details: Black Knob
Poles: 3 Speed; Single Pole, Triple Throw
Function: Off/L-1/L-2/L-3
Ratings: 3A-250VAC; 6A-125VAC
Terminals: 4 Push-In

PACKAGED	BAGGED
Item #: 61004	Item #: 90250*
Pk Qty: 1	Pk Qty: 1



Rotary Switch

Apps: Household Appliance
Details: Black Knob
Poles: 3 Speed; Single Pole, Triple Throw
Function: Off/L-1/L-2/L-3
Ratings: 6.5A-250VAC; 13A-125VAC; 3A-250VAC; 6A-125VAC
Terminals: 4 Wires 6" 18AWG

PACKAGED	BAGGED
Item #: 61204	Item #: 89921*
Pk Qty: 1	Pk Qty: 1



Rotary Switch

Apps: Household Appliance
Details: Black Knob
Poles: Single Pole, Triple Throw
Function: Off/On/On/On
Ratings: 13A-125VAC; 6.5A-250VAC
Terminals: 5 Tabs

PACKAGED	BAGGED
Item #: 61005	Item #:
Pk Qty: 1	Pk Qty:

SWITCHES

*Reference Number

Pull Chain Switches

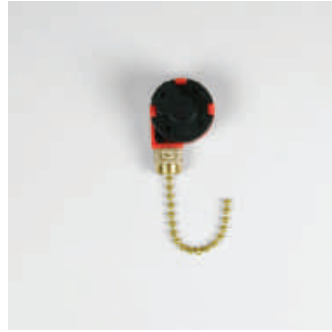
SWITCHES



Pull Chain Switch

Apps: Fan
Details: Brass Chain
Poles: 2 Speed; Single Pole, Double Throw
Function: Off/L-1/L-2
Ratings: 3A-250VAC; 6A-125VAC; 6A-125VL
Terminals: 3 Push-In

PACKAGED	BAGGED
Item #: 61202	Item #: 90071*
Pk Qty: 1	Pk Qty: 1



Pull Chain Switch

Apps: Fan
Details: Brass Chain
Poles: 3 Speed
Function: Off/L-1/L-2/L-3
Ratings: 3A-250V; 6A-125V; 3(1)A-250V
Terminals: 4 Push-In

PACKAGED	BAGGED
Item #: 60303	Item #: 88657*
Pk Qty: 1	Pk Qty: 1



Pull Chain Switch

Apps: Fan
Details: Brass Chain
Poles: 3 Speed
Function:
Ratings: 3A-250V; 6A-125V
Terminals: 8 Push-In

PACKAGED	BAGGED
Item #: 60306	Item #: 88656*
Pk Qty: 1	Pk Qty: 1



Pull Chain Switch

Apps: Fan Light
Details: Brass Chain
Poles: 1 Speed
Function: On/Off
Ratings: 3A-250V; 3A-125VT; 6A-125V; 6A-125 VL
Terminals: 2 Wires

PACKAGED	BAGGED
Item #: 60304	Item #:
Pk Qty: 1	Pk Qty:



Pull Chain Switch

Apps: Fan Light
Details: Nickel Chain
Poles: Single Pole, Single Throw
Function: On/Off
Ratings: 3A-250VAC; 6A-125VAC; 6A 3A-125VL
Terminals: 2 Wires 6" 18AWG

PACKAGED	BAGGED
Item #: 61208	Item #: 88862*
Pk Qty: 1	Pk Qty: 1



Pull Chain Switch

Apps: Lamp
Details: Brass Chain
Poles: 2-Circuit, 3-Way, 4 Position
Function: Off/L-1/L-2/L 1-2
Ratings: 3A-250VAC; 6A-125VAC; 3A-125VL
Terminals: 3 Wires 6" 18AWG

PACKAGED	BAGGED
Item #: 61200	Item #: 90069*
Pk Qty: 1	Pk Qty: 1



Pull Chain Switch

Apps: Fan Light
Details: Brass Chain
Poles: 3 Way
Function: Off/L-1/L-2/L 1-2
Ratings: 3A-250V; 6A-125V; 3A-125VL
Terminals: 3 Wires

PACKAGED	BAGGED
Item #: 60305	Item #:
Pk Qty: 1	Pk Qty:

*Reference Number

Feed-Through Switches



Lamp Cord Feed-Through Switch

Apps: Lamp
Details: White
Poles:
Function: On/Off
Ratings: 3A 250V;
 6A-125V; 3A-125VT
Terminals: 2 Teeth Terminals
 For SPT-1 Cord

PACKAGED	BAGGED
Item #: 88920	Item #:
Pk Qty: 1	Pk Qty:



Lamp Cord Feed-Through Switch

Apps: Lamp
Details: Brown
Poles:
Function: On/Off
Ratings: 3A 250V;
 6A-125V; 3A-125VT
Terminals: 2 Teeth Terminals
 For SPT-1 Cord

PACKAGED	BAGGED
Item #: 60180	Item #:
Pk Qty: 1	Pk Qty:



Feed Thru Inline Switch

Apps: Lamp
Details: Brown
Poles: Single Pole, Single
 Throw
Function: On/Off
Ratings: 3A-125VAC;
 1/2HP 125VAC
Terminals: 2 Screws
 FOR SPT-1/SPT-2/SVT
 Cord

PACKAGED	BAGGED
Item #: 61210	Item #:
Pk Qty: 1	Pk Qty:

SWITCHES

*Reference Number

Push Button Switches

SWITCHES



Push Button Switch

Apps: Household Appliance
Details: Nickel Button
Poles: Single Pole, Single Throw
Function: On/Off
Ratings: 5A-250V;
 10A-125V;
 1/4HP 125V
Terminals: 2 Wires 6" 16AWG

PACKAGED	BAGGED
Item #: 61036 Pk Qty: 1	Item #: 89255* Pk Qty: 1



Push Button Switch

Apps: Lamp
Details: Brass Button
Poles: Single Pole, Single Throw
Function: On/Off
Ratings: 3A-250VAC;
 6A-125VAC;
 6A-125VL
Terminals: 2 Wires 6" 18AWG

PACKAGED	BAGGED
Item #: 61224 Pk Qty: 1	Item #: 88743* Pk Qty: 1



Push Button Switch

Apps: Lamp
Details: Nickel Button; Long Shank
Poles: Single Pole, Single Throw
Function: On/Off
Ratings: 3A-250VAC;
 6A-125VAC;
 6A-125VL
Terminals: 2 Wires 6" 18AWG

PACKAGED	BAGGED
Item #: 61212 Pk Qty: 1	Item #: 88740* Pk Qty: 1



Push Button Switch

Apps: Lamp
Details: Brass Button
Poles: 2-Circuit, 3-Way, 4 Position
Function: Off/L-1/L-2/L 1-2
Ratings: 3A-250VAC;
 6A-125VAC;
 6A-125VL;
 1A-125VT
Terminals: 3 Wires 6" 18AWG

PACKAGED	BAGGED
Item #: 61213 Pk Qty: 1	Item #: 90364* Pk Qty: 1



Push Button Switch

Apps: Lamp
Details: Nickel Button
Poles: 2-Circuit, 3-Way, 4 Position
Function: Off/L-1/L-2/L 1-2
Ratings: 6A-125 VAC;
 3A-250VAC;
 6A-125VL;
 1A-125VT
Terminals: 3 Wires 6" 18AWG

PACKAGED	BAGGED
Item #: 61203 Pk Qty: 1	Item #: Pk Qty:



Push Button Switch-Momentary

Apps: Power Tool
Details: Black Button
Poles: Single Pole, Single Throw
Function: Normally Off
Ratings: 16A-125VAC;
 10A-250VAC
Terminals: 2 Screws

PACKAGED	BAGGED
Item #: 61123 Pk Qty: 1	Item #: 90288* Pk Qty: 1



Push Button Switch-Momentary

Apps: Buzzer
Details: Black Button
Poles: Single Pole, Single Throw
Function: Normally Off
Ratings: 6A-120VAC;
 3A-240VAC
Terminals: 2 Screws

PACKAGED	BAGGED
Item #: 61306 Pk Qty: 1	Item #: Pk Qty:



Push Button Switch-Momentary

Apps: Power Tool
Details: Nickel Button
Poles: Single Pole, Single Throw
Function: Normally On
Ratings: 15A-125VAC;
 10A-250VAC
Terminals: 2 Screws

PACKAGED	BAGGED
Item #: 61122 Pk Qty: 1	Item #: Pk Qty:

*Reference Number