

FLUSH TOWER ASSEMBLY

PART NUMBER:
7381551-401.0070A

REMOVAL:

- Turn off the water supply and flush the toilet to empty the tank
- Remove the tank cover
- Disconnect the supply line and remove the tank nuts to free the tank from the bowl
- Open the cover on the battery compartment and disconnect the battery cable from the battery terminal
- Pull the locking collar off of the hose assembly using a twisting motion then remove the hose from the flush valve body
- Make sure the O-ring is reinstalled on the barb elbow of the flush valve tower (**See Figure 1**)
- Remove the refill tube clip from the flush valve body
- Remove the nut from the bottom of the tank using a **counterclockwise** motion
- Remove the friction washer and pull the valve out from the inside of the tank

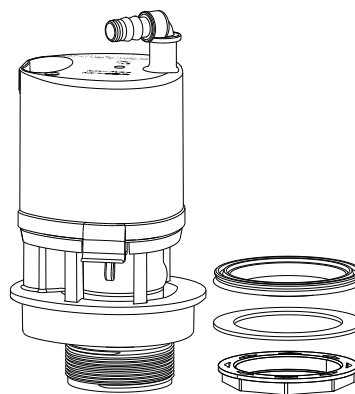
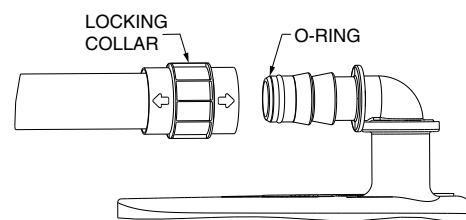


FIGURE 1



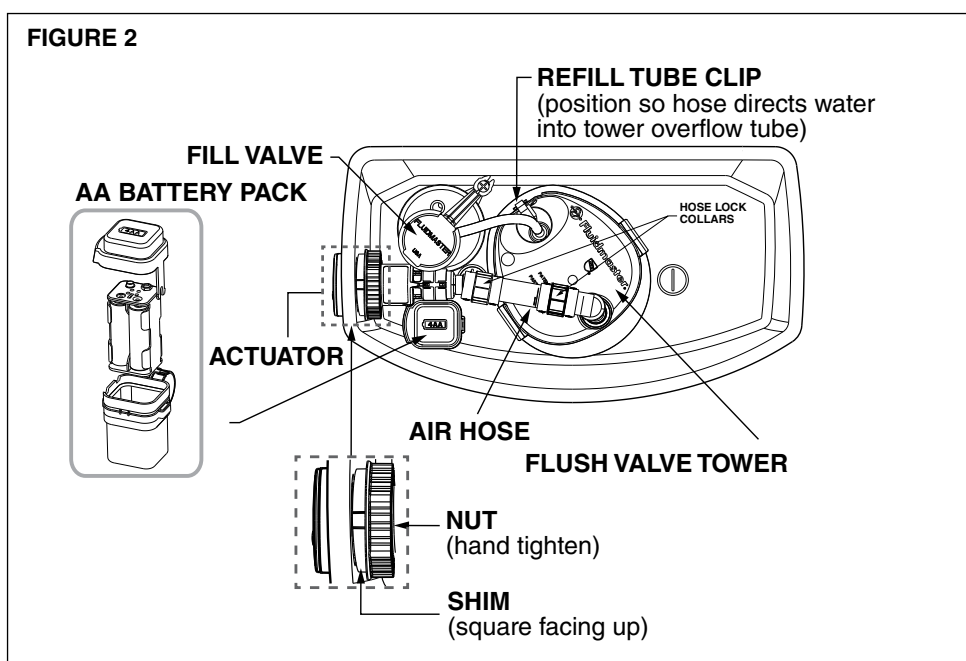
FLUSH TOWER ASSEMBLY

PART NUMBER:

7381551-401.0070A

RE-INSTALL:

- Install the new flush valve body in the tank
(See Figure 2 for orientation of flush tower)
- Hold the valve with one hand, install the friction washer over the valve threads and install the nut using a **clockwise** motion; hand tight plus ½ turn
- Slide the hose on the end of the flush valve body covering 1 barb only
- Use the locking collar to finish pushing the hose over the flush valve body until it stops
- Re-install the refill tube clip to the flush valve body
(See Figure 2)
- Reposition tank to bowl, thread supply line and hand tighten to inlet valve
- Complete tank installation by tightening tank nuts
- Reconnect the battery cable to the battery terminal, replace the battery cover and tank cover
- Turn on the water supply
- Once refilled, flush the toilet to confirm accurate operation and check for leaks



www.americanstandard-us.com/ActiVate.com