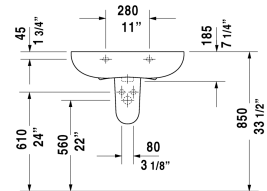
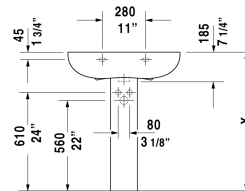
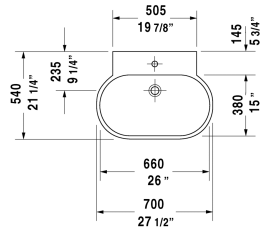


**Bathroom\_Foster Washbasin # 0419700000 / 0419700030**

| &lt; 27 5/8" Inch &gt; |



Washbasin	Dimension	Weight	Order number
with overflow, with tap platform, wall-mounted, hardware included, 27 5/8" Inch			
<b>Colors</b>			
00 White			
<b>Variant</b>			
●	27 5/8" x 21 1/4" Inch	41.8 lb	0419700000
● ● ●	27 5/8" x 21 1/4" Inch	41.8 lb	0419700030
<b>Infobox</b>			
Washbasin is not ADA compliant in combination with pedestal, siphon cover or metal console			
Sanitary ceramics with the special WonderGliss surface finish will remain clean and attractive-looking for a long time to come. When ordering WonderGliss please add a "1" as eleventh digit to the model number.			
<b>Suitable products</b>			
Siphon cover for # 041970, 041960 and 041955, 6 1/4" x 12 3/4" Inch	6 1/4" x 12 3/4" Inch		086397
Pedestal for # 041970, 041960 and 041955, 6 1/8" x 10" Inch	6 1/8" x 10" Inch		086398

All drawings contain the necessary measurements which are subject to standard tolerances. They are stated in inch & mm and are non-binding. Exact measurements, in particular for customized installation scenarios, can only be taken from the finished ceramic piece.