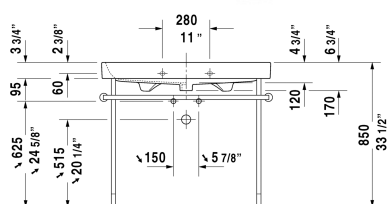
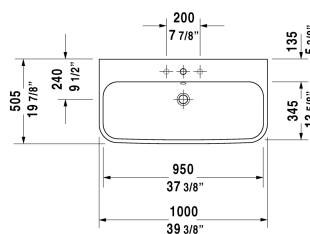
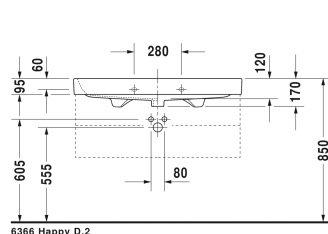


**Happy D.2 Furniture washbasin # 2318100000 / 2318100030**

| &lt; 39 3/8" Inch &gt; |

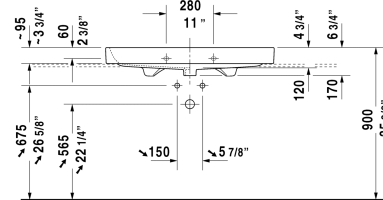
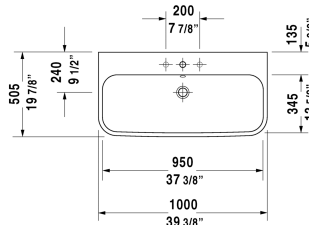


Furniture washbasin	Dimension	Weight	Order number
with overflow, with tap platform, overflow clip Chrome included, hardware included, wall-mounted, 39 3/8" Inch			
<b>Colors</b>			
00 White			
<b>Variant</b>			
●	39 3/8" x 19 7/8" Inch	59.5 lb	2318100000
● ● ●	39 3/8" x 19 7/8" Inch	59.5 lb	2318100030
Sanitary ceramics with the special WonderGliss surface finish will remain clean and attractive-looking for a long time to come. When ordering WonderGliss please add a "1" as eleventh digit to the model number.			
Space-saving siphon	1 1/4" Inch	0.9 lb	005076
<b>Suitable products</b>			
Vanity unit wall-mounted 2 drawers, upper drawer including cut-out for siphon and siphon cover, for Happy D.2 # 231810 (not ground), 38 3/8" x 18 7/8" Inch	38 3/8" x 18 7/8" Inch		H26366
Metal console height adjustable +2", Chrome, for washbasin # 231810,			003076
Vanity unit floorstanding 2 drawers, upper drawer including cut-out for siphon and siphon cover, for Happy D.2 # 231810 (not ground), 38 3/8" x 18 7/8" Inch	38 3/8" x 18 7/8" Inch		H26374

All drawings contain the necessary measurements which are subject to standard tolerances. They are stated in inch & mm and are non-binding. Exact measurements, in particular for customized installation scenarios, can only be taken from the finished ceramic piece.

**Happy D.2 Furniture washbasin ground # 2318100025 / 2318100027**

|< 39 3/8" Inch >|



Furniture washbasin ground	Dimension	Weight	Order number
with overflow, with tap platform, overflow clip Chrome included, hardware included, wall-mounted, 39 3/8" Inch			
<b>Colors</b>			
00 White			
<b>Variant</b>			
● ● ●	39 3/8" x 19 7/8" Inch	59.5 lb	2318100025
●	39 3/8" x 19 7/8" Inch	59.5 lb	2318100027
Sanitary ceramics with the special WonderGliss surface finish will remain clean and attractive-looking for a long time to come. When ordering WonderGliss please add a "1" as eleventh digit to the model number.			
<b>Suitable products</b>			
Vanity unit for console 1 pull-out compartment, compartment consists of glass dividers and 2 boxes (small/large), 39 3/8" x 21 1/2" Inch	39 3/8" x 21 1/2" Inch		XL6715
Vanity unit for console 2 drawers, upper drawer including cut-out for siphon and siphon cover, 39 3/8" x 21 1/2" Inch	39 3/8" x 21 1/2" Inch		XL6716

All drawings contain the necessary measurements which are subject to standard tolerances. They are stated in inch & mm and are non-binding. Exact measurements, in particular for customized installation scenarios, can only be taken from the finished ceramic piece.