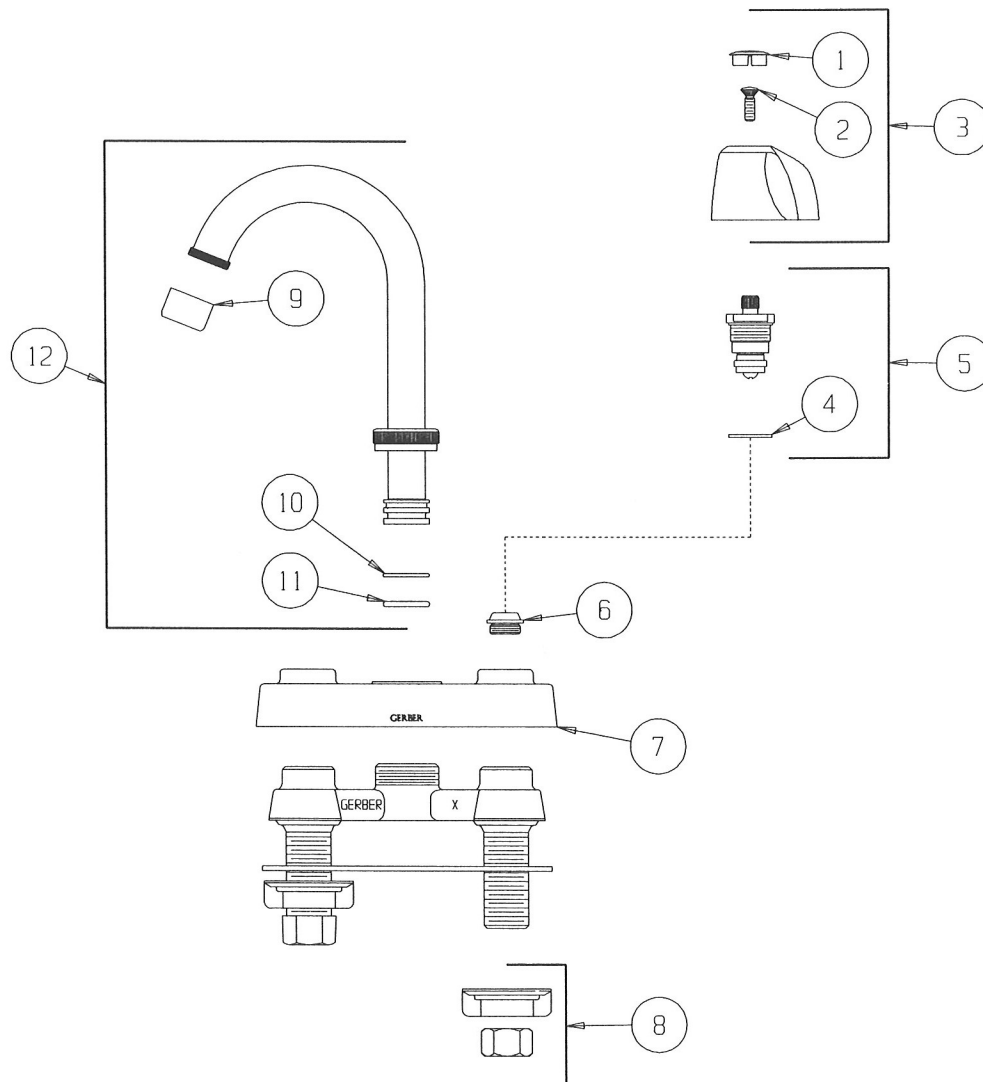


49-251

Prefixes: X, XX, 08, 80, 88

Suffixes: 47, 49, 66, 67, 68, 95, 96

ITEM NO.	DESCRIPTION	UN-FINISHED	CHROME
1	"C" INDEX BUTTON	94-252	
	"H" INDEX BUTTON	94-251	
2	HANDLE SCREW	90-700	
3	SMALL HOT STANDARD HANDLE S/A		97-908
	SMALL COLD STANDARD HANDLE S/A		97-909
	STANDARD HANDLE PACK (HOT & COLD)		60-000
4	CELCON WASHER	90-331	
5	HOT STEM & BONNET S/A	98-688	
	COLD STEM & BONNET S/A	98-689	
6	BRASS SEAT	90-161	
7	COVER FOR BAR FAUCET		92-615
8	PLASTIC LOCKNUT & SHANK NUT (QTY 2 EA.)	97-800	
	BRASS LOCKNUT & SHANK NUT (QTY 2 EA.)	97-804	
	ZINC DIE CAST LOCKNUT & SHANK NUT (QTY 2 EA.)	97-799	
9	FEMALE AERATOR W/ FLOW RESTRICTOR		92-382
10	TOP O-RING	98-730	
11	BOTTOM O-RING	98-660	
12	GOOSENECK BAR SPOUT S/A		98-246



See the Index for a Description of Prefixes & Suffixes