

**Product Features**

- Heating capacities from 100,000 – 400,000 BTUH.
- Up to 80.5% thermal efficiency.
- Stainless steel heat exchanger is available for longer product life.
- Heat exchangers are laboratory life-cycle tested.
- Tubular heat exchangers made of aluminized steel or stainless steel.
- Aluminized steel in shot burners provide efficient trouble free operation.
- Sidewall venting eliminates roof penetrations.
- Wiring junction box is located outside of unit.
- Safe direct spark ignition. No standing pilot light.
- Self-diagnostic board with LED display improves troubleshooting efficiency and accuracy.
- 3/8 x 16 rivet nuts are located on the top of cabinet for suspending unit using threaded rod.
- Power exhaust system with a sealed flue collector allows conventional vertical or horizontal venting to 35 ft (depends on unit size).



**Technical Data**

	Model	SEP -100#-&	SEP -115#-&	SEP -145#-&	SEP -175#-&	SEP -200#-&	SEP -230#-&	SEP -250#-&	SEP -300#-&	SEP -345#-&	SEP -400#-&
<b>Gas Heating Performance</b>	Heating Capacity Input (BTUH)	100,000	115,000	145,000	172,500	195,000	230,000	250,000	300,000	345,000	390,000
	Output Natural Gas (BTUH)	80,500	92,000	116,000	138,000	156,000	184,000	201,250	241,500	276,000	312,000
	Output LPG/Propane (BTUH)	82,000	92,000	115,000	138,000	156,000	184,000	205,000	246,000	281,200	312,000
	Steady State Efficiency -- Natural Gas	80.5%	80.0%	80.0%	80.0%	80.0%	80.0%	80.0%	80.5%	80.5%	80.0%
	Steady State Efficiency -- LPG / Propane	82.0%	80.0%	80.0%	80.0%	80.0%	80.0%	82.0%	82.0%	81.5%	80.0%
<b>Connections</b>	Flue Size Round (in)	4 <sup>[1]</sup>	4 <sup>[1]</sup>	4 <sup>[1]</sup>	5 <sup>[2]</sup>	5 <sup>[2]</sup>	5 <sup>[2]</sup>	5 <sup>[2]</sup>	5 <sup>[2]</sup>	6 <sup>[3]</sup>	6 <sup>[3]</sup>
	Gas Piping Size (in, NPT)	1/2	1/2	1/2	1/2	1/2	3/4	3/4	3/4	3/4	3/4
<b>Fan Data</b>	Number of Fans	1	1	1	1	1	2	2	2	2	2
	Diameter (in)	16	16	16	16	16	16	16	16	16	16
	Number of Blades	4	4	4	4	4	4	4	4	4	5
	Motor Output (hp)	1/8	1/8	1/8	1/8	1/8	1/8	1/8	1/8	1/8	1/8
	Motor Full Load Amps	2.1	2.1	2.1	2.1	2.1	2.1	2.1	2.1	2.1	2.1
	Motor RPMs	1075	1075	1075	1075	1075	1075	1075	1075	1075	1075
Air Volume (CFM)	1900	1900	1900	2200	2200	4400	4400	4400	4400	4400	
<b>Physical Data</b>	Overall Dimensions H x W x D (in)	32-3/16 x 20-3/16 x 39-3/16	32-3/16 x 20-3/16 x 39-3/16	32-3/16 x 20-3/16 x 39-3/16	32-3/16 x 23-1/8 x 39-3/16	32-3/16 x 23-1/8 x 40	32-3/16 x 41-1/8 x 40	32-3/16 x 41-1/8 x 40	32-3/16 x 41-1/8 x 40	32-3/16 x 41-1/8 x 41-1/8	32-3/16 x 41-1/8 x 41-1/8
	Ship Weight (lbs)	150	150	165	185	185	275	275	280	310	315

[1] 2-1/8 x 4 in. (54 x 102 mm) diameter adaptor is furnished with unit for flue connection.

[2] 2-1/4 x 2-3/4 in. (57 x 70 mm) rectangular to 5 in. (127 mm) round adaptor is furnished with unit for flue connection.

[3] 2-1/4 x 2-3/4 in. (57 x 70 mm) rectangular to 6 in. (152 mm) round adaptor is furnished with unit for flue connection.

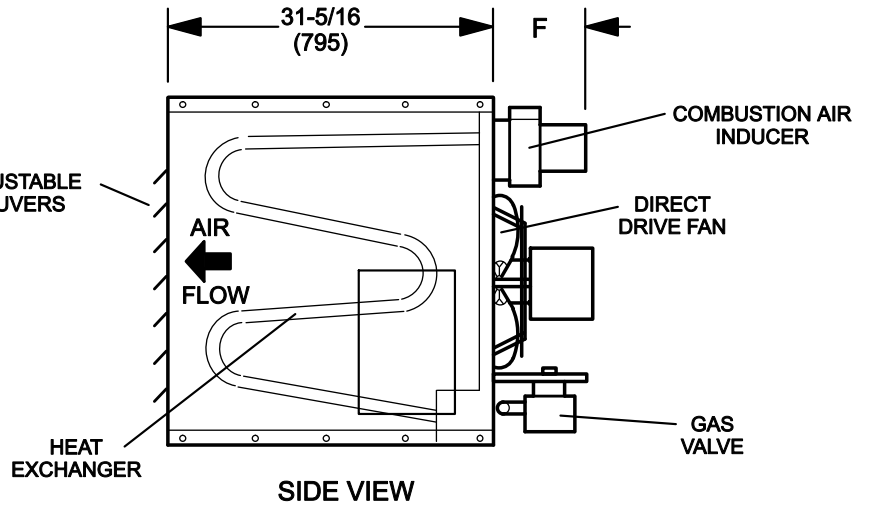
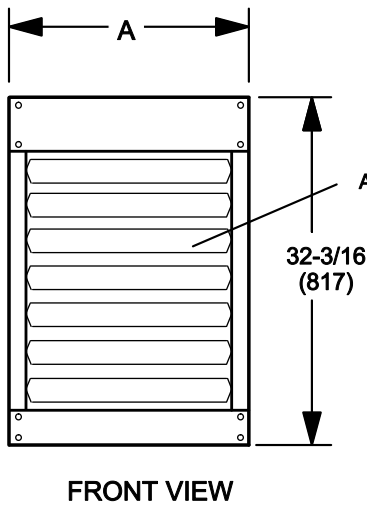
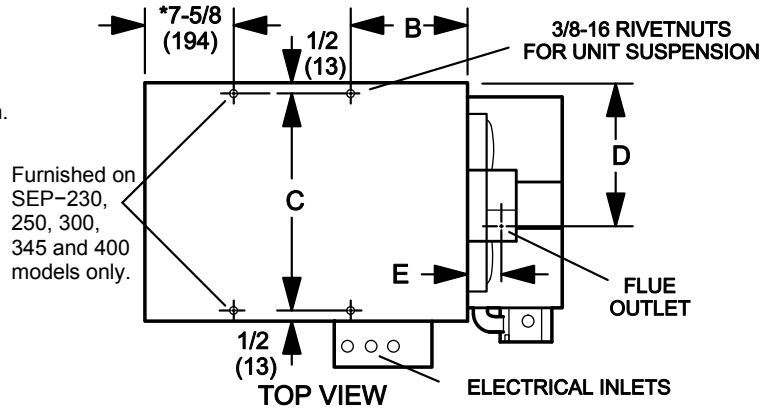
# A = Aluminized steel heat exchanger; S = Stainless steel heat exchanger; All models are 115 volts, 60 Hz, 1 phase.  
& N = Natural Gas; P = LP Gas

Note: SEP unit heaters are not approved for residential applications.

**Dimensions**

**NOTE:** Single fan model shown.  
 SEP models 100, 115, 145, 175 and 200 have a single fan.  
 SEP models 230, 250, 300, 345 and 400 have two fans.

**\* NOTE:** Two mounting nuts are furnished on SEP models 100, 115, 145, 175 and 200.  
 Four mounting nuts are furnished on SEP models 230, 250, 300, 345 and 400 models.



Model Size	A		B		C		D		E		F	
	in.	mm	in.	mm	in.	mm	in.	mm	in.	mm	in.	mm
100 115 145	20-3/16	512	11-1/2	292	19-1/16	484	11-3/4	298	3-1/4	83	7-7/8	200
175 200	23-1/8	588	11-1/2	292	22-1/16	560	8-1/2	337	3-1/4	83	8-11/16	220
230 250 300	41-1/8	1045	3-11/16	97	40	1016	17-3/4	451	3-1/2	89	8-11/16	220
345 400	41-1/8	1045	3-11/16	97	40	1016	17-1/2	445	3-1/2	89	9-13/16	248