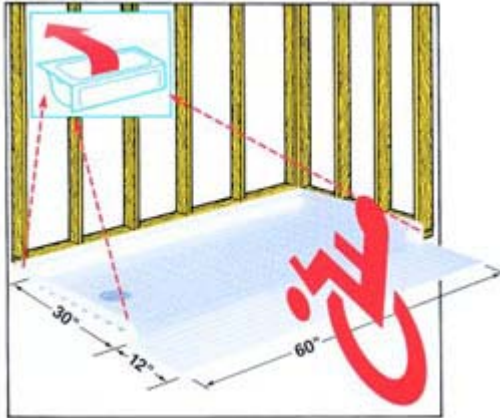


Model 360 Barrier-Free Shower Floor with Entry Ramp

ADA Designed



Model 360 Barrier-Free Shower Floor With Entry Ramp

Available in White or Bone
 (shown with CareGiver 26" Seat and 20" x 42" Grab Bar)



Model 360 Barrier-Free Shower Floor With Entry Ramp

The curbless floor and entry-ramp system is designed for easy wheelchair access and is slip-resistant. Its offset 8-1/2" x 15" drain placement (similar to that of a bathtub) provides convenient installation or retrofit. Strong molded fiberglass construction provides long-lasting service, a clean contemporary look, resistance to mold, mildew and stains, with semigloss finish for cleaning ease.

Floors offer a choice of left or right drain opening for 2" drain to utilize existing plumbing when replacing a standard 5' bathtub. The entry ramp may be cut to accommodate nearby plumbing fixtures. A clear, flexible vinyl drip rail assembly is also available for entry ramp. (Entry ramp sold separately)

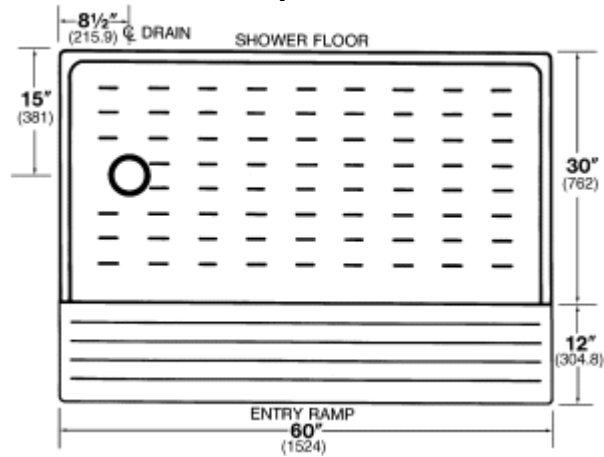
Complies with specifications:

- Americans with Disabilities Act (ADA)
 608 Shower, 608.1 General, 608.2 Size & Clearance, 608.2.2 Standard roll-in type, 608.7 Curbs
- Code of Federal Regulations:
 4.21 Shower Stalls, 4.21.2 Size Clearance, 4.21.7 Curbs
- American Society of Testing & Materials (ASTM)-D635 Flammability, E84 Flame Spread, E165.75 Fire Retardancy
- Inhalation Toxicity Test

SPECIFICATIONS

Model	Nom. Size	Color Drain Location	>UPC	Installation Instructions
SHOWER FLOOR — choice of right or left hand drain location				
360R	30"x60"	White Right Hand	6 71031 00271 6	Download PDF
360RBN	30"x60"	Bone Right Hand	6 71031 00272 3	Download PDF
360L	30"x60"	White Left Hand	6 71031 00273 0	Download PDF
360LBN	30"x60"	Bone Left Hand	6 71031 00274 7	Download PDF
ENTRY RAMP — adapts to threshold				
360.100	12"x60"	White—	6 71031 00275 4	Download PDF
360.100BN	12"x60"	Bone —	6 71031 00276 1	Download PDF

Top View



General: Furnish and install as shown on plans, barrier-free DURABASE® Shower Floor model _____ and Entry Ramp model _____ as manufactured by E.L. Mustee & Sons, Inc. Shower floor to be one-piece, molded fiberglass, using matched metal molds under extreme heat and pressure. Surface to be slip-resistant design that does not interfere with flow of water. Size: 30"x60". Shoulder will be not less than 3-1/16" high or less than 1-1/4" wide. Tiling flange will extend not less than 1" higher than shoulder. Shower floors shall not have curb used in conjunction with 12"x60" entry ramp per ADA requirements. Drain available on right or left side, offset 8 1/2"x15". Shall meet ANSI Specification Z 124.2A-1990. Color _____ (White, Bone). Install in compliance with local codes.