


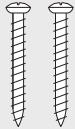

Temperature Remote Controller 100276687 (TM-RE43)

FOR YOUR SAFETY

For your safety and the safety of the owners, please read these instructions carefully before installation. Follow these instructions exactly. After installation, please give this manual to the owner.

INCLUDED ACCESSORIES*

Be sure that the following items are included with the remote controller.

Temperature Remote Controller	Screws	Manual
 Qty: 1	 Qty: 2	 Qty: 1

*In addition to the above items, a connecting cable comes with the remote controller that is included with the water heater.

INSTALLATION



WARNING

This remote controller is NOT waterproof.

Do not install in high temperature environments, steamy conditions (such as a bathroom), outdoors, in direct sunlight, or within the reach of children.

Make sure the remote controller does not come into contact with water or oil.

Failure to observe these warnings could result in electrical shock.

- Do not place the remote controller cable close to other wires from other products.
- Do not extend the remote controller cable more than 400 feet (122 m).

<Mounting and Wiring the Remote Controller>

1. Take the **Frame** off of the remote controller with a flat head screwdriver. (**Fig. A and B**)
2. Attach the **Metal plate** on the wall with two provided screws. (**Fig. B**)
3. If you use another cable, crimp the **Fork terminals** to the wires. (**Fig. C**)
4. Open the **Plastic cover** and tighten the two **Fork terminals** beneath the two **Remote controller terminal** screws on the back of the **Main unit** (**Fig. D-1**). Cut out the inlet for the cable from the bottom of the main unit (**Fig. D-2**). Insert the cable through the inlet.
5. Close the **Plastic cover** (**Fig. D-1**) and then hook the **Main unit** to the **Fixing bracket** on the **Metal plate**. (**Fig. B**)
6. Attach the **Frame** back onto the remote.
7. Connect the **Remote controller cable** to the remote controller terminal on the computer board. See TEMPERATURE REMOTE CONTROLLER in the Installation Manual for details.

Fig. A

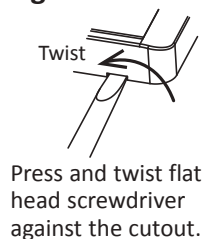


Fig. B

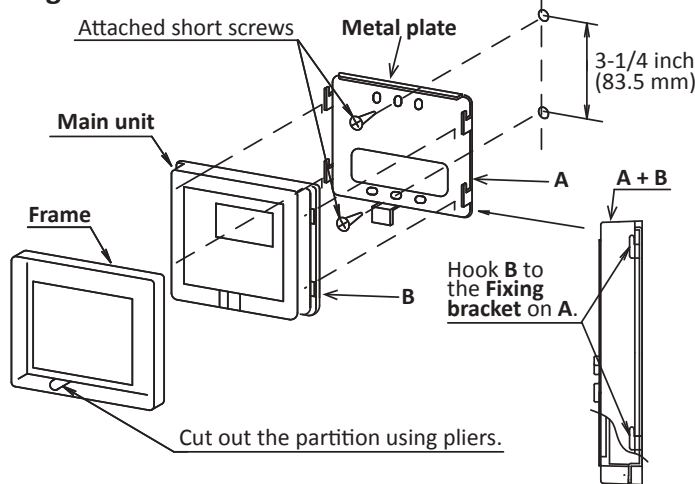


Fig. C

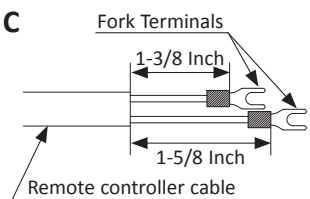


Fig. D-1

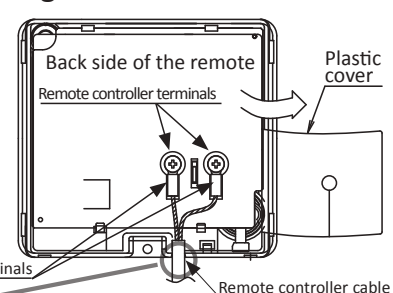


Fig. D-2

