

**Studio® S 33-Inch Vanity Sink  
and Optional Furniture**

- ☐ **1298008** Faucet holes on 8" (203mm) centers
- ☐ **1298001** Faucet holes - center hole only
  - Vitreous china
  - Rectangular vanity sink
  - Front overflow
  - Design coordinates with Studio® S Collection
  - Supplied with cut-out template
  - Sink can be used with optional furniture

**Bowl size:**

22-7/16" (570 mm) wide

14-3/16" (360 mm) front-to-back

4" (102 mm) deep

**Nominal Dimensions:**

*Vanity Sink Top Only:*

33" x 20" (838 x 508 mm)

*Single Vanity Option:*

33" x 20" x 34-1/16" (838 x 508 x 866 mm)

*Double Vanity with Vanity Middle Option:*

76" x 20" x 34-1/16" (1930 x 508 x 866 mm)

- ☐ **8726033** 33" Double drawer vanity
- ☐ **8722000** Vanity leg set
- ☐ **8727000** Vanity middle

**Compliance Certifications -**

**Meets or Exceeds the Following Specifications:**

- ASME A112.19.2/CSA B 45.1



**Studio S double 33" vanity tops 1298008 shown  
with double 33" vanities 8726033, double vanity  
leg sets 8722000, vanity middle 8727000 and  
double widespread faucets**

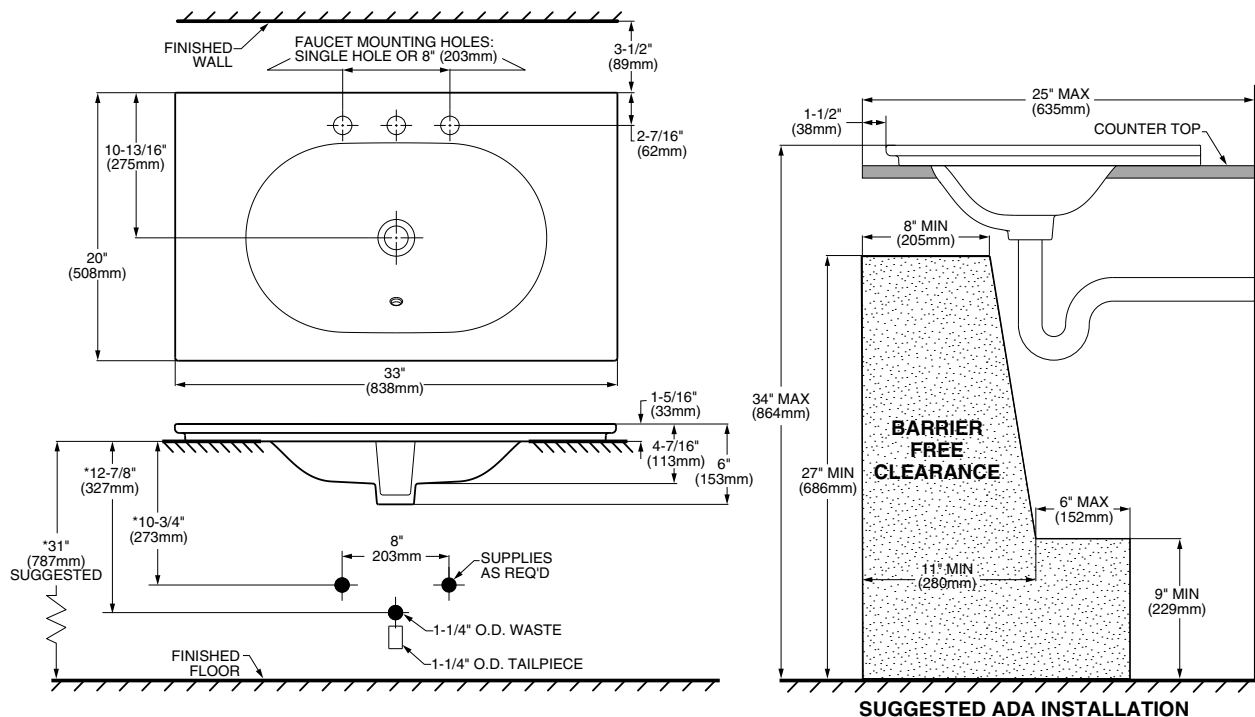
SEE FOLLOWING PAGES FOR ROUGHING-IN DIMENSIONS

**To Be Specified:**

- ☐ Chinaware Color: ☐ White
- ☐ Vanity Finish: ☐ White ☐ Dark Grey
- ☐ Vanity Leg Set Finish: ☐ Chrome ☐ Matte Black
- ☐ Vanity middle Finish: ☐ White ☐ Dark Grey
- ☐ Faucet:\*

\* See Studio® S faucet section for models available

### SINK INSTALLED IN COUNTER BY OTHERS (NO FURNITURE OPTION)



**MEETS THE AMERICANS WITH DISABILITIES ACT GUIDELINES  
AND ICC ANSI A117.1 ACCESSIBLE AND USABLE  
BUILDINGS AND FACILITIES - CHECK LOCAL CODES.**

Install lavatory 34" (864mm) from finished floor.

Lavatory installed 1-1/2" (38mm) minimum from front edge of countertop provides 27" (686mm) knee clearance area.

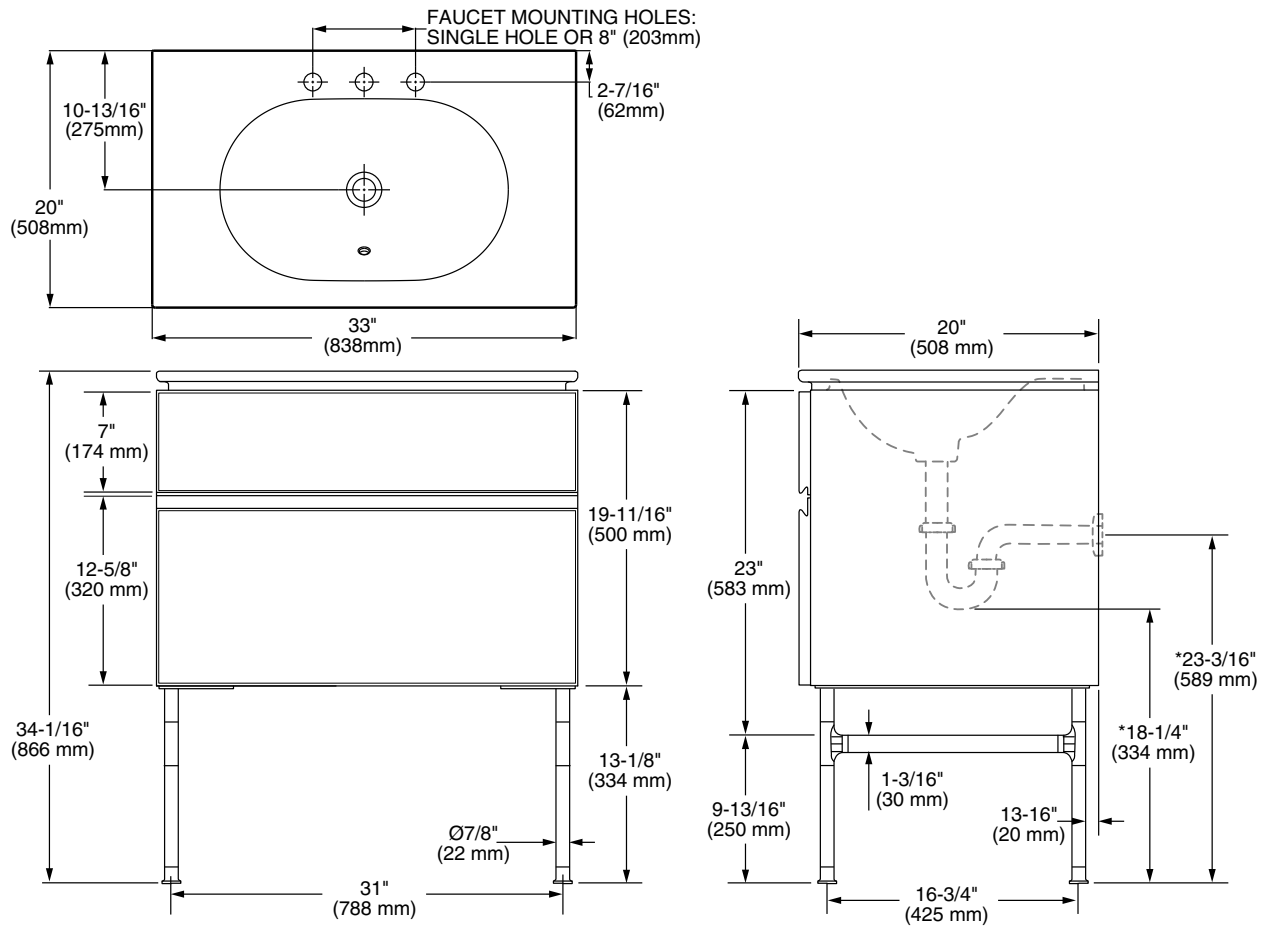
Not compliant when used with optional furniture.

**NOTES:**

**\* DIMENSIONS SHOWN FOR LOCATION OF SUPPLIES AND "P" TRAP ARE SUGGESTED.  
FITTINGS NOT INCLUDED WITH FIXTURE AND MUST BE ORDERED SEPARATELY.  
FOR COUNTERTOP CUTOUT AND INSTALLATION INSTRUCTIONS USE TEMPLATE SUPPLIED WITH SINK.  
FURNITURE SPECIFIC INSTRUCTIONS SUPPLIED WITH OPTIONAL FURNITURE.**

**IMPORTANT:** Dimensions of fixtures are nominal and may vary within the range of tolerances established by ANSI Standard A112.19.2. These measurements are subject to change or cancellation. No responsibility is assumed for use of superseded or voided pages.

SINK INSTALLED IN OPTIONAL FURNITURE - SINGLE VANITY OPTION



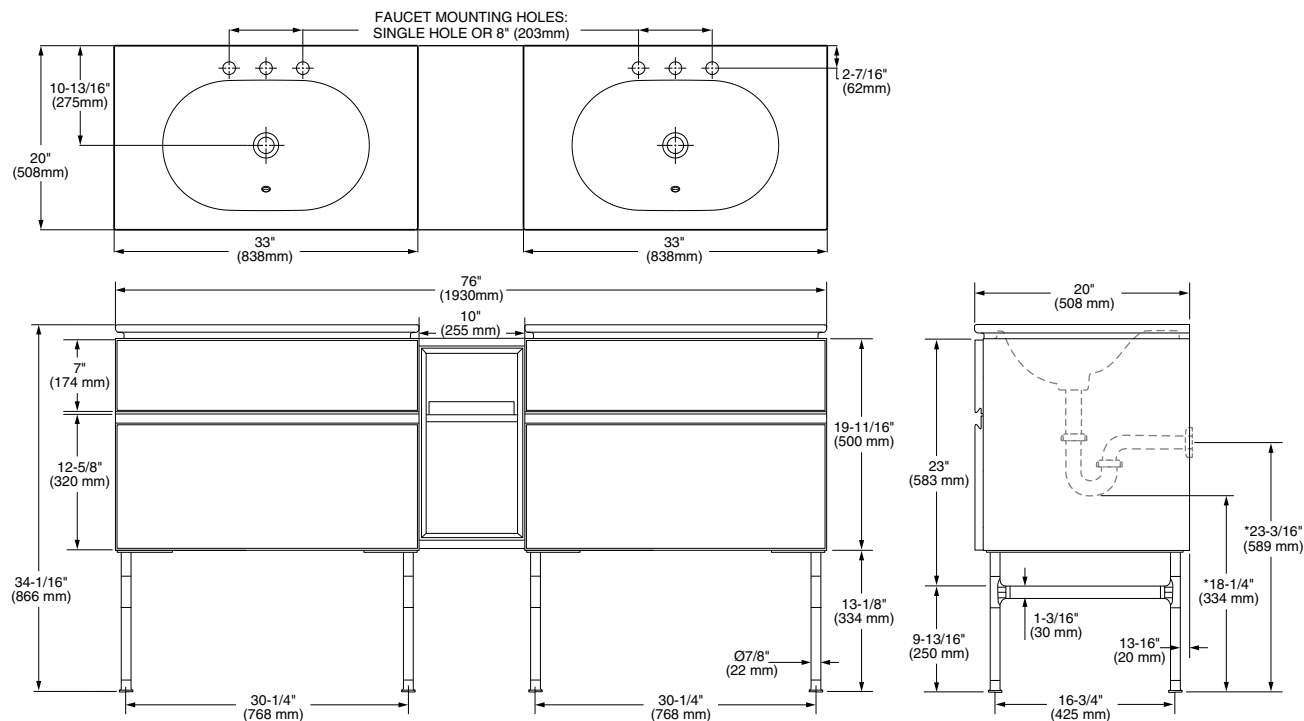
**NOTE:** Vanity can be installed with optional vanity leg set shown or mounted directly to wall.

**NOTES:**

\* DIMENSIONS SHOWN FOR LOCATION OF SUPPLIES AND "P" TRAP ARE SUGGESTED.  
FITTINGS NOT INCLUDED WITH FIXTURE AND MUST BE ORDERED SEPARATELY.  
FURNITURE SPECIFIC INSTRUCTIONS SUPPLIED WITH OPTIONAL FURNITURE.

**IMPORTANT:** Dimensions of fixtures are nominal and may vary within the range of tolerances established by ANSI Standard A112.19.2. These measurements are subject to change or cancellation. No responsibility is assumed for use of superseded or voided pages.

**SINK INSTALLED IN OPTIONAL FURNITURE - DOUBLE VANITY WITH VANITY MIDDLE OPTION**



**NOTE: Vanities can be installed with optional vanity leg set shown or mounted directly to wall.**

**NOTES:**

\* DIMENSIONS SHOWN FOR LOCATION OF SUPPLIES AND "P" TRAP ARE SUGGESTED.  
 FITTINGS NOT INCLUDED WITH FIXTURE AND MUST BE ORDERED SEPARATELY.  
 FURNITURE SPECIFIC INSTRUCTIONS SUPPLIED WITH OPTIONAL FURNITURE.

**IMPORTANT:** Dimensions of fixtures are nominal and may vary within the range of tolerances established by ANSI Standard A112.19.2. These measurements are subject to change or cancellation. No responsibility is assumed for use of superseded or voided pages.