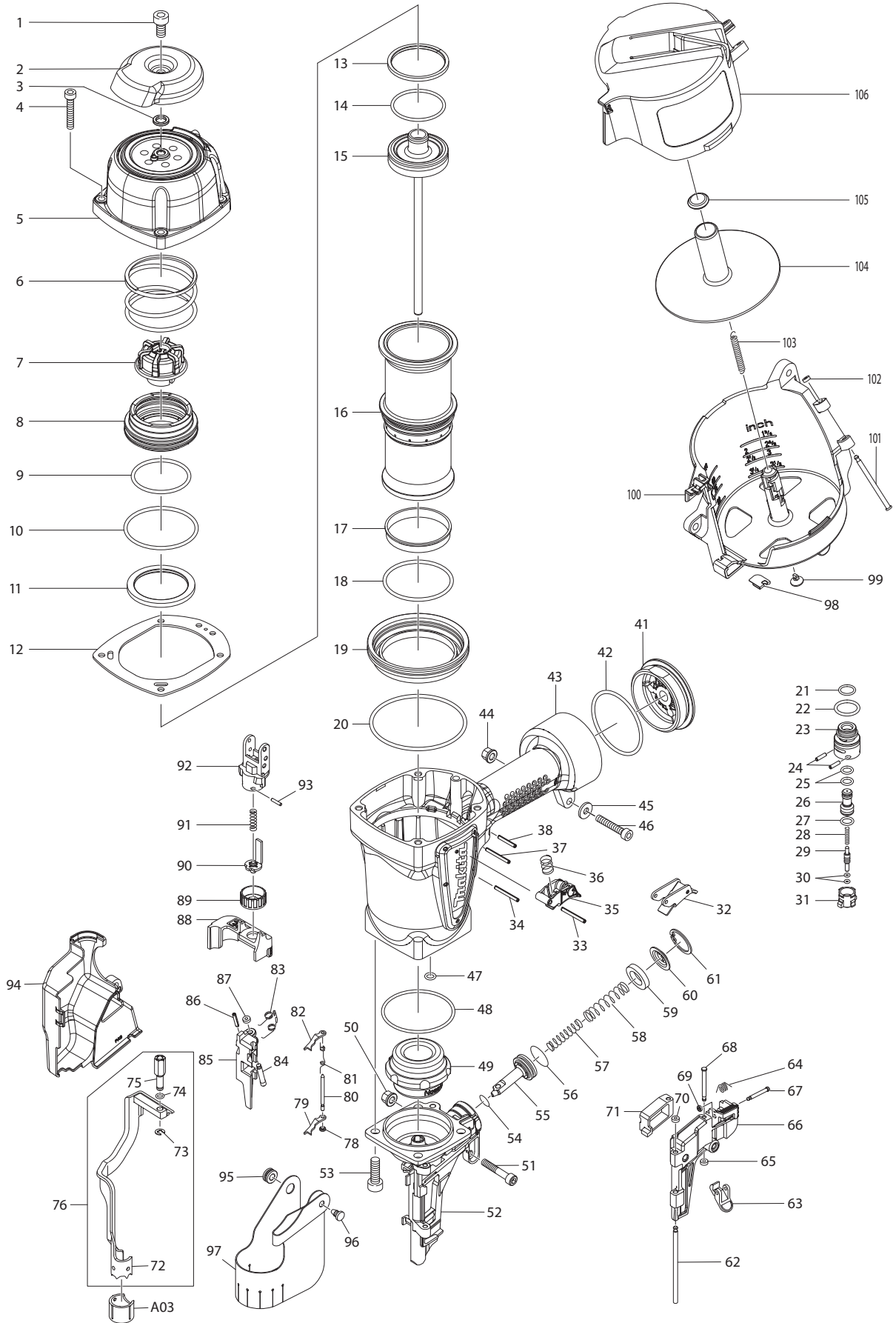




11 - 2011  
AN902  
COIL FRAMING NAILER



Item No.	Type	Sub	Part No.	Description	Qty	Unit
1			BA00000263	HEX.SOC.HD.BOLT M8x1.25-16	1	PC.
2			BA00000264	DEFLECTOR	1	PC.
3			BA00000005	RUBBER PAD	1	PC.
4			BA00000265	HEX.SOC.HD.BOLT M6x1.0-35	4	PC.
5			BA00000352	CAP COMPLETE	1	PC.
6			BA00000353	COMPRESSION SPRING	1	PC.
7			BA00000354	SEAL	1	PC.
8			BA00000355	HD VALVE PISTON	1	PC.
9			BA00000356	O RING 49.4 X 3.1	1	PC.
10			BA00000290	O RING 63.17 X 2.62	1	PC.
11			BA00000357	COLLAR	1	PC.
12			BA00000273	CYLINDER CAP SEAL	1	PC.
13			BA00000358	PISTON RING	1	PC.
14			BA00000359	O RING 45.7X2.62	1	PC.
15			BA00000360	DRIVER UNIT	1	PC.
16			BA00000361	CYLINDER	1	PC.
17			BA00000362	CYLINDER RING	1	PC.
18			BA00000363	O RING 59.4 X 3.1	1	PC.
19			BA00000364	CYLINDER SPACER	1	PC.
20			BA00000280	O RING 84.4 X 3.1	1	PC.
21			BA00000026	O RING 12.42 X 1.78	1	PC.
22			BA00000028	O RING 18.72 X 2.62	1	PC.
23			BA00000027	PLUNGER CAP	1	PC.
24			BA00000036	SPIRAL PINS 40880	2	PC.
25			BA00000030	O RING 5.8X1.9	2	PC.
26			BA00000029	VALVE PLUNGER	1	PC.
27			BA00000031	O RING 8.8X1.9	1	PC.
28			BA00000032	SPRING	1	PC.
29			BA00000033	PLUNGER	1	PC.
30			BA00000034	O RING 3	2	PC.
31			BA00000035	TRIGGER VALVE HEAD	1	PC.
32			BA00000039	TRIGGER UNIT	1	PC.
33			BA00000038	SPIRAL PINS 3-30	1	PC.
34			BA00000038	SPIRAL PINS 3-30	1	PC.
35			BA00000040	TRIGGER UNIT	1	PC.
36			BA00000102	SPRING	1	PC.
37			BA00000038	SPIRAL PINS 3-30	1	PC.
38			BA00000037	SPIRAL PINS 3-22	1	PC.
41			BA00000393	END CAP PT1/4"-19	1	PC.
42			BA00000356	O RING 49.4x3.1	1	PC.
43			BA00000366	GUN BODY UNIT	1	PC.
44			BA00000250	BOLT CAP	1	PC.
45			BA00000245	FLAT WASHER D16xD6.3xT2	1	PC.
46			BA00000265	HEX.SOC.HD.BOLT M6x1.0-35	1	PC.
47			BA00000387	O RING 7.8x1.9	1	PC.
48			BA00000290	O RING 63.17x2.62	1	PC.
49			BA00000388	BUMPER	1	PC.
50			BA00000250	BOLT CAP	1	PC.
51			BA00000289	HEX.SOC.HD.BOLT M6x1.0-38	1	PC.
52			BA00000367	NOSE PIECE	1	PC.
53			BA00000292	HEX.SOC.HD.BOLT M8x1.25-25	4	PC.
54			BA00000293	O RING 9.8x2.4	1	PC.
55			BA00000368	FEED PISTON	1	PC.
56			BA00000295	O RING 20.8x2.4	1	PC.
57			BA00000369	PUSHER-SPRING A	1	PC.
58			BA00000296	PUSHER-SPRING A	1	PC.
59			BA00000298	FEED BUMPER	1	PC.

Item No.	Type	Sub	Part No.	Description	Qty	Unit
60			BA00000299	FEED PISTON CAP	1	PC.
61			BA00000300	C RING	1	PC.
62			BA00000309	DOOR SHAFT PIN	1	PC.
63			BA00000301	DOOR LATCH	1	PC.
64			BA00000370	LATCH SPRING	1	PC.
65			BA00000306	PU RETAINER	1	PC.
66			BA00000371	DOOR	1	PC.
67			BA00000304	PIN	1	PC.
68			BA00000305	PIN NAIL STOP	1	PC.
69			BA00000060	URETHANE RETAINER	1	PC.
70			BA00000306	PU RETAINER	1	PC.
71			BA00000373	NAIL STOP	1	PC.
72			BA00000375	SAFETY A	1	PC.
73			BA00000083	E RING	1	PC.
74			BA00000081	O RING	1	PC.
75			BA00000317	ADJUST ROD	1	PC.
76			BA00000374	SAFETY A UNIT	1	PC.
78			BA00000060	URETHANE RETAINER	1	PC.
79			BA00000333	NAIL STOP	1	PC.
80			BA00000335	PIN-NAIL STOP	1	PC.
81			BA00000334	STOPPER FINGER SPRING	1	PC.
82			BA00000333	NAIL STOP	1	PC.
83			BA00000338	FEED FINGER SPRING	1	PC.
84			BA00000337	PIN FEED PISTON	1	PC.
85			BA00000384	FEED FINGER	1	PC.
86			BA00000339	SPIRAL PINS 3x16	1	PC.
87			BA00000306	PU RETAINER	1	PC.
88			BA00000316	SAFETY COVER	1	PC.
89			BA00000077	ADJUST AXLE	1	PC.
90			BA00000315	SAFETY B	1	PC.
91			BA00000314	SAFETY SPRING	1	PC.
92			BA00000313	SAFETY GUIDE	1	PC.
93			BA00000074	PIN 2.5x10	1	PC.
94			BA00000385	SPRING COVER	1	PC.
95			BA00000342	PROTECTOR WASHER	1	PC.
96			BA00000343	DUST SHIELD PLUG	1	PC.
97			BA00000386	MUZZLE PROTECTOR	1	PC.
98			BA00000379	WASHER	1	PC.
99			BA00000325	SPRING BASE	1	PC.
100			BA00000377	MAGAZINE COMPLETE	1	PC.
101			BA00000326	MAGAZINE SHAFT PIN	1	PC.
102			BA00000306	PU RETAINER	1	PC.
103			BA00000380	PULL SPRING	1	PC.
104			BA00000381	SPACER	1	PC.
105			BA00000329	SPRING BASE A	1	PC.
106			BA00000389	MAGAZINE COVER COMPLETE	1	PC.
<b>ACCESSORIES</b>						
A01			181434-7	OIL SUPPLY 30CC	1	PC.
A02			195246-2	SAFETY GOGGLE	1	PC.
A03			BA00000372	PROTECTIVE CASING	1	PC.