



SERVICE PARTS LIST

BULLETIN NO.
54-47-0430

SPECIFY CATALOG NO. AND SERIAL NO. WHEN ORDERING PARTS		REVISED BULLETIN	DATE
M12™ FUEL 1/4" LONG REACH RATCHET			Nov. 2022
CATALOG NO.	2568-20	SERIAL NUMBER	N27A
		WIRING INSTRUCTION See Pages 2 and 3	

EXAMPLE:
Component Parts
(Small #) Are Included
When Ordering Assy.
(Large #).

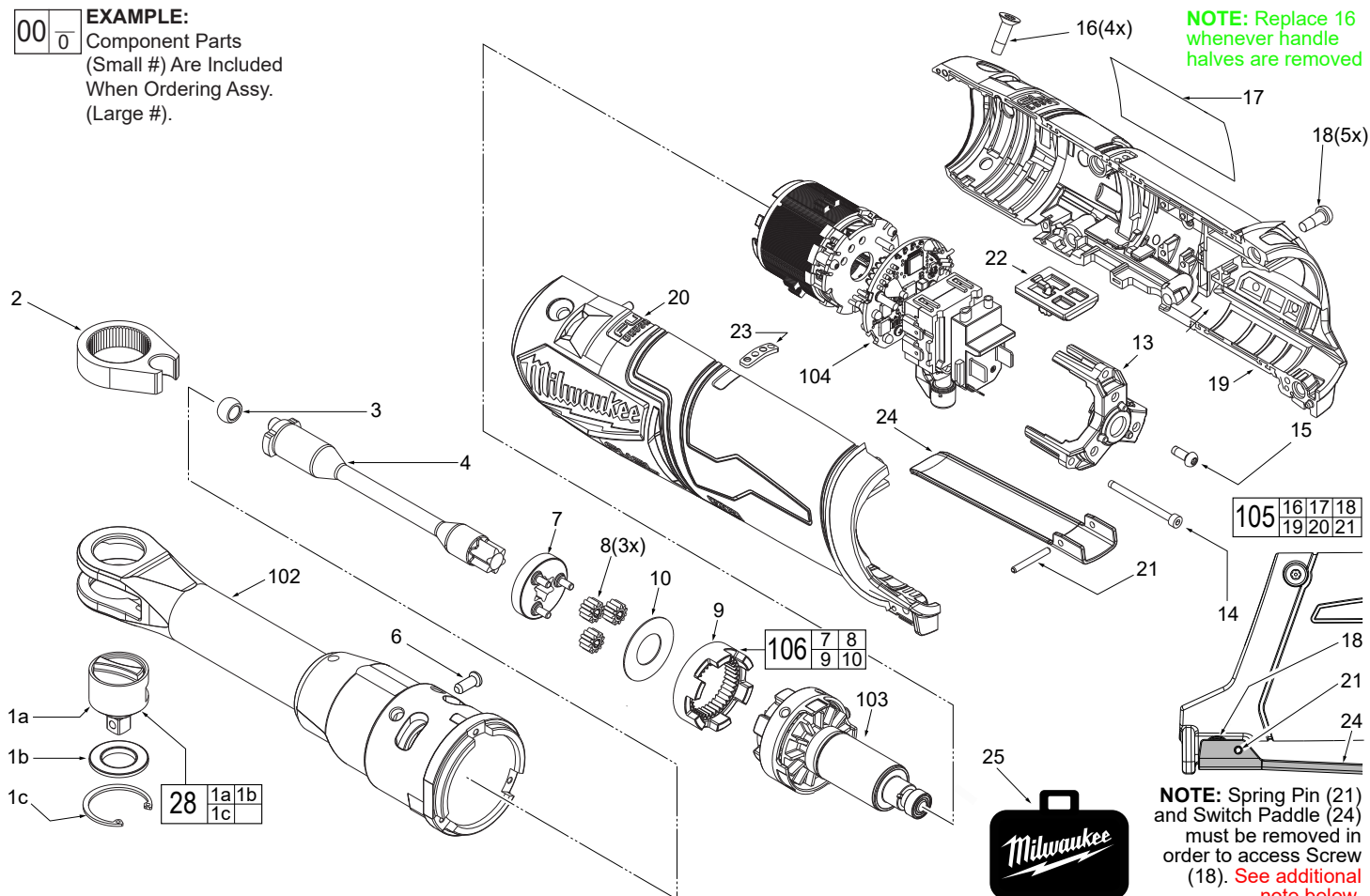


FIG.	PART NO.	DESCRIPTION OF PART	NO. REQ.
1a	-----	1/4" Anvil	(1)
1b	-----	Friction Plate	(1)
1c	-----	Retaining Ring	(1)
2	45-98-0020	Yoke (for 1/4" ratchet)	(1)
3	42-40-0017	Bushing (for 1/4" ratchet)	(1)
4	36-17-0016	Crank Shaft (for 1/4" ratchet)	(1)
6	44-60-0890	Drive Pin	(1)
7	28-23-1010	Carrier	(1)
8	32-62-0085	Planet Gear (for 1/4" ratchet)	(3)
9	32-64-0130	Ring Gear (for 1/4" ratchet)	(1)
10	05-90-0230	Washer	(1)
13	44-66-1006	Motor Plate	(1)
14	05-84-0205	M2.5 Screw	(3)
15	06-82-2310	M3 x 8mm Pan Hd. T-10 Screw	(1)
16	05-81-0594	M4 Flat Hd. T-20 Screw	(4)
17	12-20-0461	Service Nameplate	(1)
18	05-71-0017	M4 x 10mm Pan Hd. T-20 Screw	(5)
19	-----	Housing Cover - Right Housing Halve	(1)
20	-----	Housing Support - Left Housing Halve	(1)
21	44-60-0575	Rivet Pin	(1)
22	42-42-0119	Switch Lock-Out	(1)
23	10-20-7229	Fuel Gauge Label	(1)
24	44-10-0740	Switch Paddle	(1)
25	42-55-2559	Zippered Tool Case	(1)
26	49-16-2569	Rubber Boot (Optional, Acc) (Not Shown)	(1)
28	42-06-0146	1/4" Anvil Service Kit	(1)
102	14-30-0446	1/4" Yoke / Beam / Gearcase Service Assy	(1)
103	16-01-2560	Rotor Service Assembly (for 1/4" ratchet)	(1)
104	14-20-2561	Electronics Service Assembly	(1)
105	14-38-0505	Housing Service Kit	(1)
106	28-23-2500	Gear Set Service Kit	(1)

- FIG. 17,19** **NOTES**
Prior to installing a new service nameplate, apply isopropyl alcohol to the handle cover with a clean, lint free applicator and allowed to dry.
- 21** Use a thin blunt punch with the same OD or a similar tool like a finishing nail with the same OD and the pointed tip ground down to remove spring pin from the handle halves and switch paddle. **As an aid, be sure to prop up that corner end of ratchet to support the tapping out of the spring pin.** When reinstalling pin, align the holes and carefully press or tap the pin in place.