

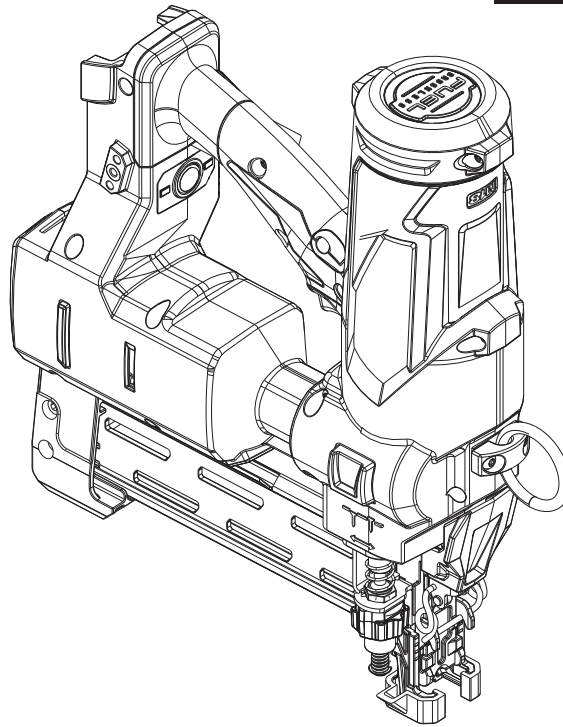


SERVICE PARTS LIST

BULLETIN NO.
54-00-2843

SPECIFY CATALOG NO. AND SERIAL NO. WHEN ORDERING PARTS		REVISED BULLETIN	DATE
M18™ FUEL UTILITY-FENCING STAPLER			Aug. 2023
CATALOG NO. 2843-20	SERIAL NO. M78A thru C	WIRING INSTRUCTION	

AVAILABLE SERVICE PARTS PAGE 2



This product is to be serviced **ONLY** by personnel authorized by MILWAUKEE TOOL. Do **NOT** attempt to purchase parts and install them yourself. Installation by anyone other than an authorized MILWAUKEE personnel could void your warranty.

For service, parts, or inquiries, contact us:

- Customer Service at 1.800.SAWDUST (1.800.729.3878)
- E-Service tool repair at: www.milwaukeetool.com/e-service
- Find a local approved MILWAUKEE service location at Milwaukeetool.com
- Find a MILWAUKEE *factory* Service Center Location or MILWAUKEE *factory* Central Repair Center at Milwaukeetool.com. Send the following, posted paid and insured:
 - Your name, address, and phone number
 - Description of the issues
 - Copy of the proof of purchase
 - Tool, charger, and batteries involved with the issues

MILWAUKEE *factory* Central Repair Centers:

MILWAUKEE TOOL
Central Repair
1401 Sycamore Avenue
Greenwood, MS 38930

MILWAUKEE TOOL
Central Repair
2198 Southtech Drive
Greenwood, IN 46143

00 0

EXAMPLE:
Component Parts (Small #) Are Included
When Ordering The Assembly (Large #).



132

133 1
2

1
2

115
(x2)

131

119
(x2)

120
(x2)

146 115 119
120

Removal: Apply heat
to aid in screw
removal to prevent
stripping.

Install: Apply Red
Loctite to full screw
threads.

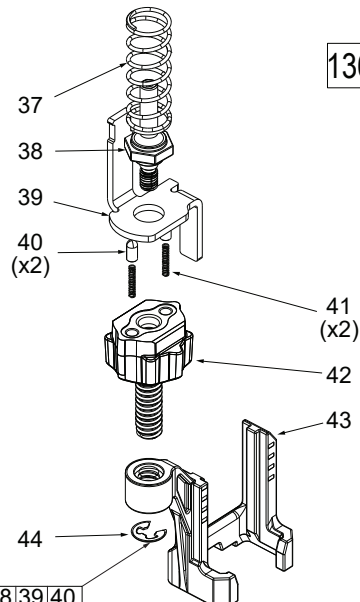
114
(x2)

134 4 5
6

4
(x2)

136 17 18
20

FIG.	PART NO.	DESCRIPTION OF PART	NO. REQ.
1	05-74-0019	M5 x 14 Bolt	(1)
2	-----	Belt Hook	(1)
4	-----	M5 x 0.8 PH T-25 Screw	(2)
5	-----	Hook Ring	(1)
6	-----	Hanger Holder	(1)
17	-----	C-Ring	(1)
18	-----	Latch Pin	(1)
20	-----	Latch Spring Cover	(1)
37	40-50-0587	Depth Adjustment Spring	(1)
38	-----	Linear Guide Bolt	(1)
39	-----	Actuation Bracket	(1)
40	-----	Depth Adjustment Ball Pin	(2)
41	-----	Spring for Depth Ball Pin	(2)
42	-----	Depth Adjustment Knob	(1)
43	44-62-0116	Work contact Bracket	(1)
44	42-70-0550	E-Ring	(1)
114	05-81-0197	M5 x 0.8 T-25 Screw	(2)
115	06-75-0062	M5 x 0.8 Hex Mach. Screw	(2)
119	45-88-0010	Flat Washer	(2)
120	05-74-0019	M5 x 0.8 Mach. Screw	(2)
129	10-20-7197	Tool Warning Label (Not Shown)	(1)
130	12-20-0299	Service Nameplate (Not Shown)	(1)
131	10-20-7198	Magazine Label	(1)
132	42-55-0074	Tall Contractor Bag	(1)
133	42-70-0024	Belt Clip Kit	(1)
134	14-46-9310	Lanyard Ring Kit	(1)
136	14-46-0438	Jam Latch Service Kit	(1)
139	14-46-0439	DAK Service Kit	(1)
146	43-40-2843	Magazine Assembly	(1)



139 38 39 40
41 42 44