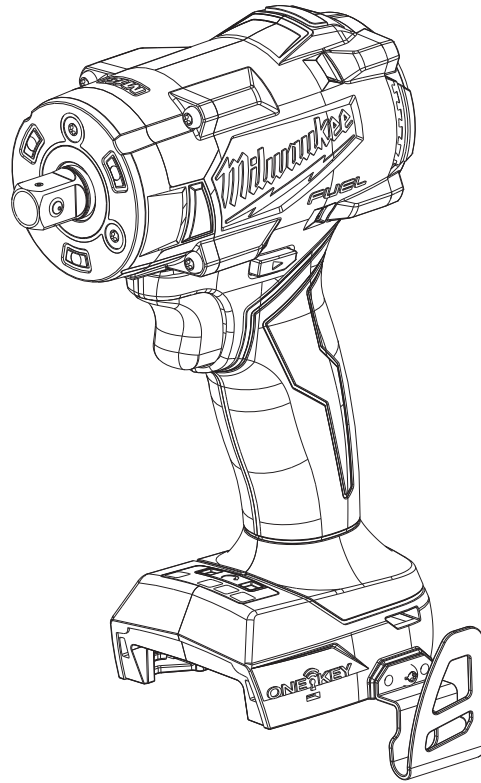




SERVICE PARTS LIST

BULLETIN NO.
54-26-3045

SPECIFY CATALOG NO. AND SERIAL NO. WHEN ORDERING PARTS		REVISED BULLETIN	DATE
M18 FUEL™ 1/2" Detent Pin Controlled Torque Compact Impact Wrench			Jan. 2024
CATALOG NO.	3061P-20	SERIAL NO.	M90A
		WIRING INSTRUCTION See Pages 4 & 5	



This product is to be serviced **ONLY** by personnel authorized by MILWAUKEE TOOL. Do **NOT** attempt to purchase parts and install them yourself. Installation by anyone other than an authorized MILWAUKEE personnel could void your warranty.

For service, parts, or inquiries, contact us:

- Customer Service at 1.800.SAWDUST (1.800.729.3878)
- E-Service tool repair at: www.milwaukeetool.com/e-service
- Find a local authorized MILWAUKEE service location at Milwaukeetool.com
- Find a MILWAUKEE *factory* Service Center Location or MILWAUKEE *factory* Central Repair Center at Milwaukeetool.com. Send the following, posted paid and insured:
 - Your name, address, and phone number
 - Description of the issues
 - Copy of the proof of purchase
 - Tool, charger, and batteries involved with the issues

MILWAUKEE *factory* Central Repair Centers:

MILWAUKEE TOOL
Central Repair
1401 Sycamore Avenue
Greenwood, MS 38930

MILWAUKEE TOOL
Central Repair
2198 Southtech Drive
Greenwood, IN 46143

EXAMPLE:
 Component Parts (Small #)
 Are Included When Ordering
 The Assembly (Large #).

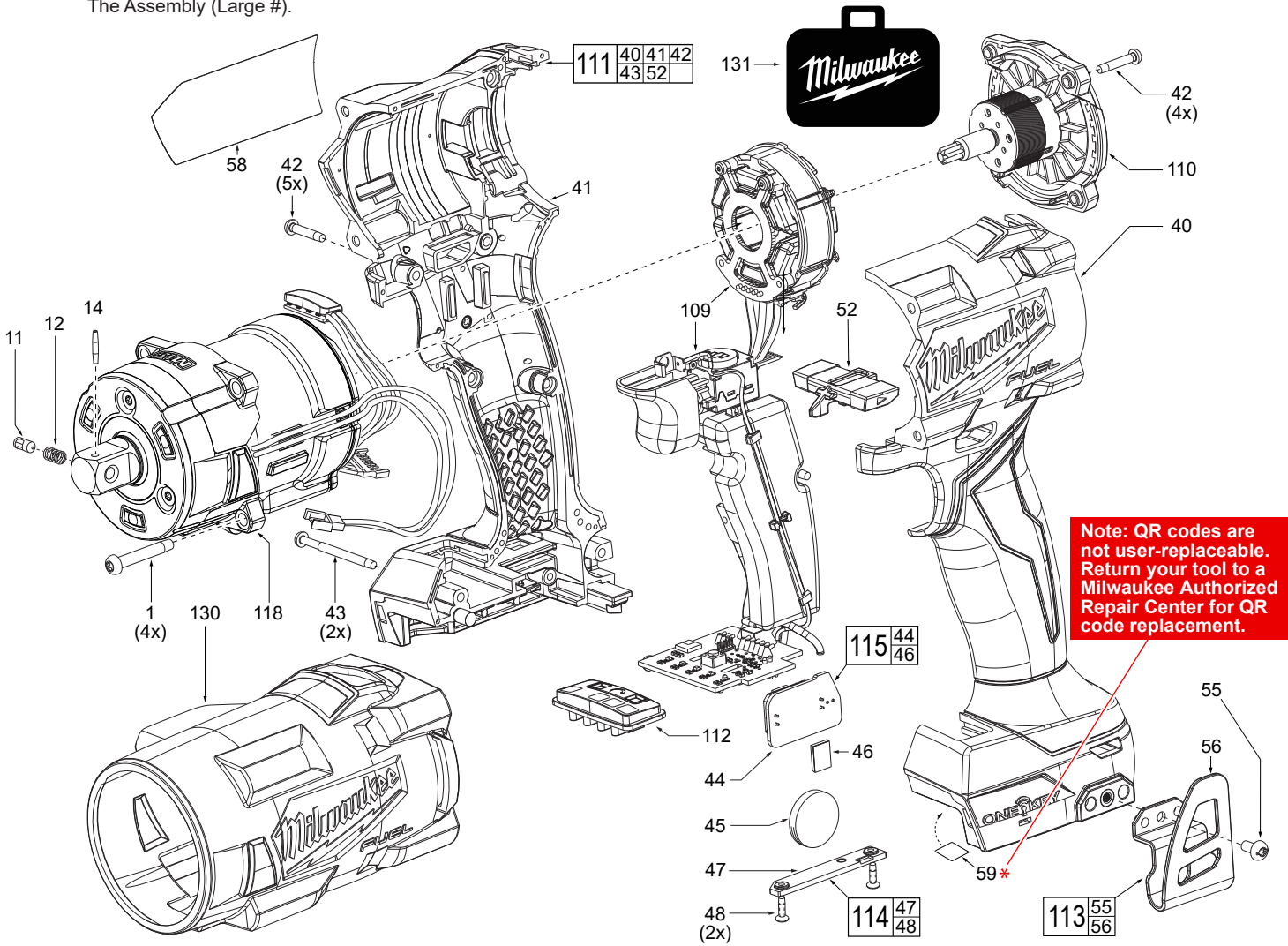


FIG.	PART NO.	DESCRIPTION OF PART	NO. REQ.
1	05-74-7130	M4 x 1.411 Pan Hd. T-20 ST Screw	(4)
11	44-60-7085	Detent Pin	(1)
12	40-50-4051	Anvil Spring	(1)
14	44-60-0022	Solid Pin	(1)
40	-----	Right Housing Halve-Cover	(1)
41	-----	Left Housing Halve-Support	(1)
42	06-82-6351	M3 x 1.058 Pan Hd. ST T-10 Screw	(9)
43	06-82-2367	M3 x 1.058 Pan Hd. ST T-10 Screw	(2)
44	22-09-0015	Coin Cell PCBA	(1)
45	-----	Coin Cell	(1)
46	44-52-0006	Foam Pad	(1)
47	-----	Coin Cell Cover	(1)
48	-----	M2.6 PH ST Screw	(2)
52	45-24-9015	Forward/Reverse Shuttle	(1)
55	06-82-2500	6-32 x 7mm Pan Hd. Tapt. T-15 Screw	(1)
56	42-70-5151	Belt Clip	(1)
58	12-20-9880	Service Nameplate	(1)
59	-----	QR Code Label	(1)
109	14-20-9265	Electronics Assembly	(1)
110	16-01-6020	Rotor/Back Cap Assembly	(1)
111	14-34-7020	Handle Housing Kit	(1)
112	45-24-2860	Speed Selector Assembly	(1)

FIG.	PART NO.	DESCRIPTION OF PART	NO. REQ.
113	42-70-0950	Belt Clip Kit	(1)
114	45-04-7015	Coin Cell Cover Screw Assembly	(1)
115	14-20-9185	Coin Cell PCBA Assembly	(1)
118	14-29-9020	Gearbox Assembly	(1)
130	49-16-2858	Rubber Boot (Accessory)	(1)
131	48-53-3060	Blow Molded Carrying Case	(1)

SCREW TORQUE SPECIFICATIONS				
FIG.	PART NO.	WHERE USED	SEAT TORQUE	
			(kgf-cm)	(lbs-in)
1	05-88-1650	Gearcase Assy.	30±2	26±2
42	06-82-6351	Right Housing Halve	11±1	10±1
42	06-82-6351	Rotor/Back Cap Assy.	8±2	7±1
43	06-82-2367	Right Housing Halve	11±1	10±1
48	-----	Cell Cover Screw Assy.	4±.5	3±.4
55	06-82-2500	Belt Clip	16±2	14±2

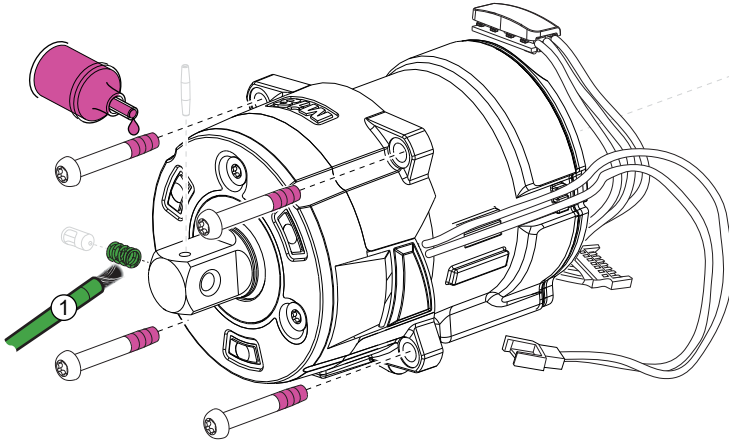
LUBRICATION INSTRUCTIONS



Use Type "J" Grease, No. 49-08-4220 (1-lb. tub)

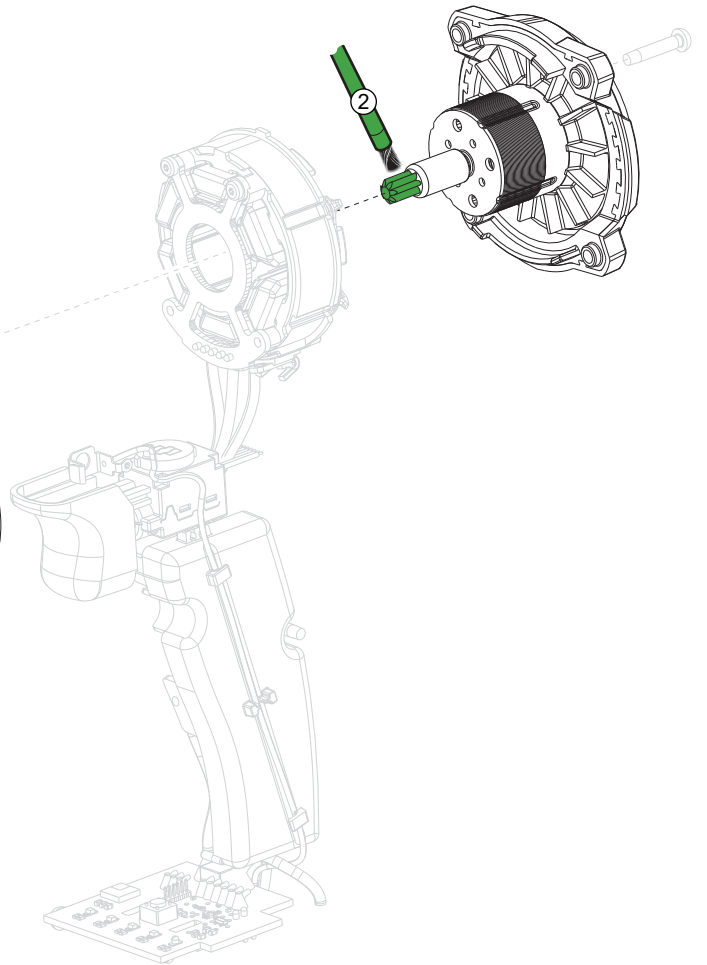
NOTE: When servicing, clean rotor surface with a dry cloth.

- ① Apply a **light coating** of grease to this part.
- ② Apply a **liberal amount** of grease to this part.

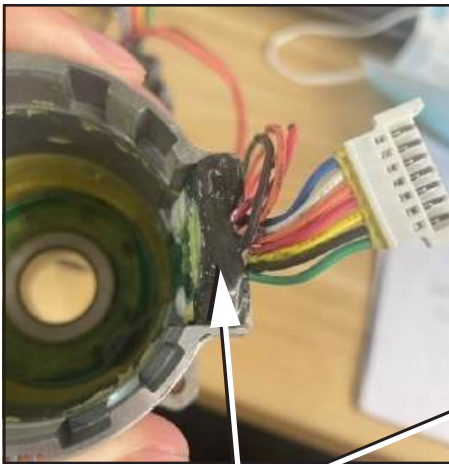


Use Red Loctite 277, No. 44-22-0050

NOTE: Regarding parts to receive thread locking sealant: Place **3-4 drops per screw** of the recommended Loctite® thread locking sealant (or the equivalent) to the threads of parts shown prior to installation.

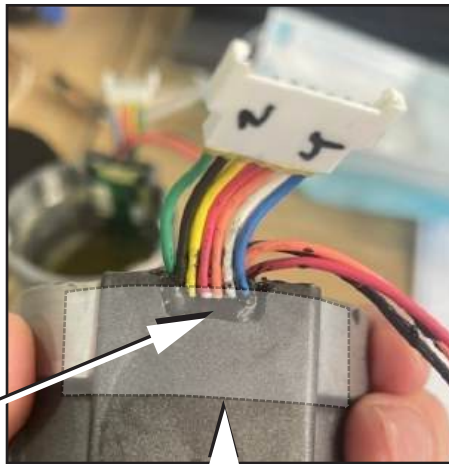


GEARBOX SEALANT INSTRUCTIONS

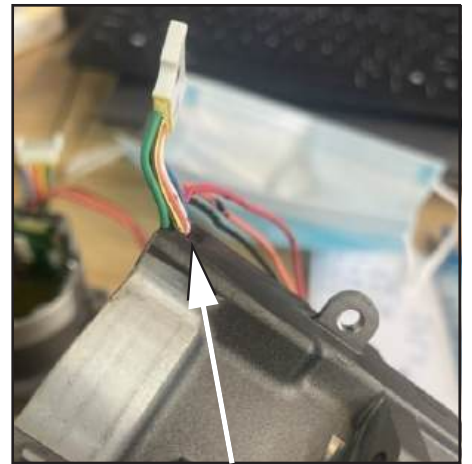


Use sealant Loctite SI 5900

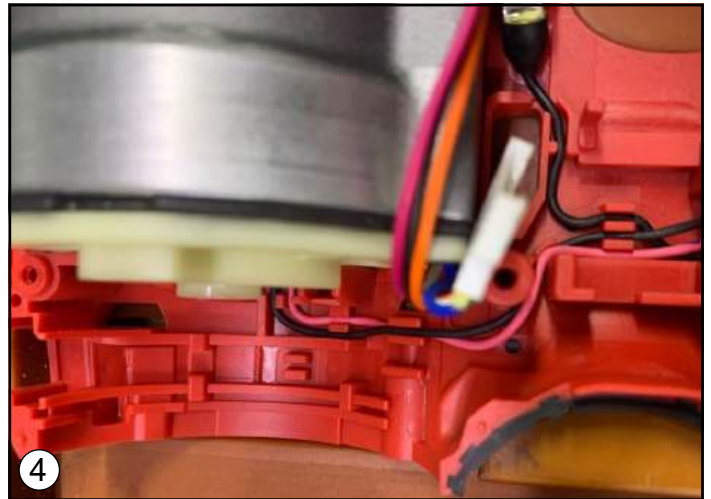
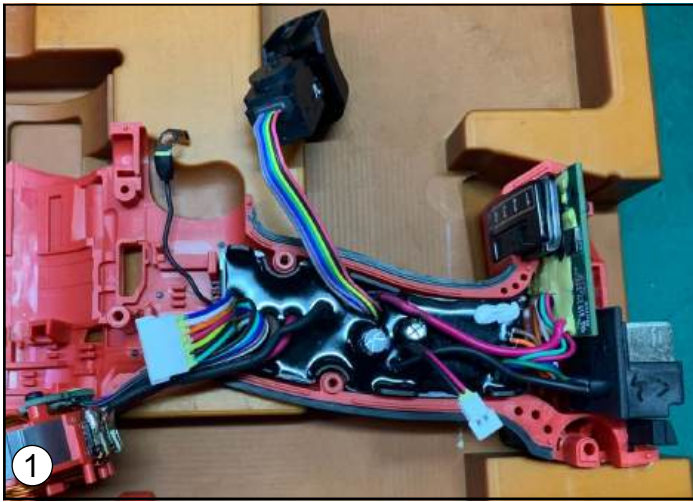
Place sealant where connector wires attach to the gearbox assembly (in areas shown above).



Place a piece of tape over the sealant to prevent it from spreading over gearcase.



NOTE: Sealant height should not exceed the surface of the gearcase.



WIRE ROUTING

1. Place potting boat assembly in left handle halve. Assemble the battery terminal block and mode selector into the corresponding cavities in handle halve.
2. Place high voltage ring terminal over the screw boss as shown. Route ground wire through the traps/channels in handle halves being sure wire is seated completely to the bottom.
3. Route wires from TRI-LED lighting assembly through wire traps on front gearcase. Secure the wires in place with a 1" strip of Kapton tape (or an equivalent).
4. Assemble gearcase assembly into handle halve. Be sure gearcase is seated firmly and squarely in handle.
5. Route wires from TRI-LED lighting assembly as shown, placing wires firmly down in traps.



WIRE ROUTING (continued)

6. Install stator to the rear of the handle half. Place stator wires in handle half cavity in the following order from bottom to top: gray, magenta, black. Be sure stator is firmly and squarely in handle cavity and that stator wires are pushed completely down below the top edge of handle. Join connector of shadowless lighting assembly with connector of potting boat assembly.
7. Install the on-off switch over the ground wire and into cavity in handle half. Be sure on-off switch is seated firmly and squarely in position. Check that all electrical and mechanical components are properly in place in handle half. Be sure there are no interferences creating pinched wires.
8. Install right handle half (cover) over left handle half (support). Check for the proper functionality of switch and shuttle. Secure handle halves together with five M3 x 16mm screws (42) and two M3 x 38mm screws (43). Carefully install rotor/back cap assembly into stator and onto the rear of tool (see illustration). Secure with four M3 x 16mm screws.

