



SERVICE PARTS LIST

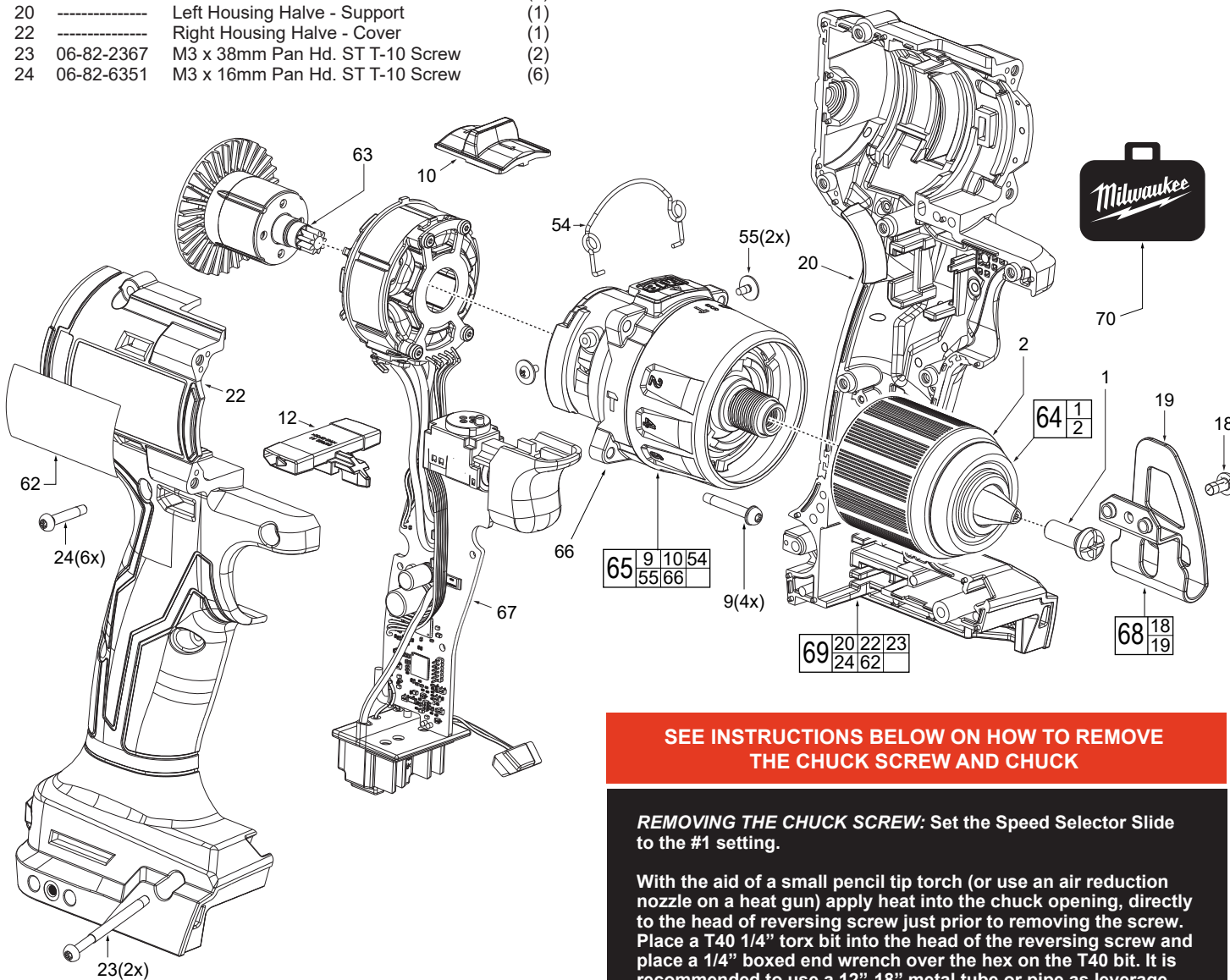
BULLETIN NO.
54-24-2995

SPECIFY CATALOG NO. AND SERIAL NO. WHEN ORDERING PARTS		REVISED BULLETIN	DATE
M18™ Compact Brushless Hammer-Drill			April 2023
CATALOG NO.	3602-20	STARTING SERIAL NO.	N67A
		WIRING INSTRUCTION SEE PAGE 2	

FIG.	PART NO.	DESCRIPTION OF PART	NO. REQ.
1	05-88-0202	M6.0 x 13mm Chuck Screw	(1)
2	-----	1/2" Keyless Chuck	(1)
9	06-82-7337	M4 x 20mm Pan Hd. ST T-10 w/Washer Scr.	(4)
10	45-24-2880	Speed Selector	(1)
12	42-42-7015	Forward/Reverse Shuttle	(1)
18	06-82-2500	#6-32 PH Torx T-15 Screw	(1)
19	-----	Belt Hook	(1)
20	-----	Left Housing Halve - Support	(1)
22	-----	Right Housing Halve - Cover	(1)
23	06-82-2367	M3 x 38mm Pan Hd. ST T-10 Screw	(2)
24	06-82-6351	M3 x 16mm Pan Hd. ST T-10 Screw	(6)

EXAMPLE:
Component Parts (Small #) Are Included
When Ordering The Assembly (Large #).

See page 3 for fastener
tightening procedure and
torque specifications.



SEE INSTRUCTIONS BELOW ON HOW TO REMOVE THE CHUCK SCREW AND CHUCK

REMOVING THE CHUCK SCREW: Set the Speed Selector Slide to the #1 setting.

With the aid of a small pencil tip torch (or use an air reduction nozzle on a heat gun) apply heat into the chuck opening, directly to the head of reversing screw just prior to removing the screw. Place a T40 1/4" torx bit into the head of the reversing screw and place a 1/4" boxed end wrench over the hex on the T40 bit. It is recommended to use a 12"-18" metal tube or pipe as leverage over the boxed wrench. In a clockwise direction apply a slow, steady force on the 'cheater bar' to break the screw loose.

REMOVING THE KEYLESS CHUCK:

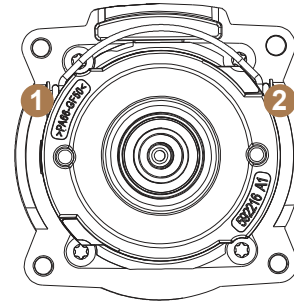
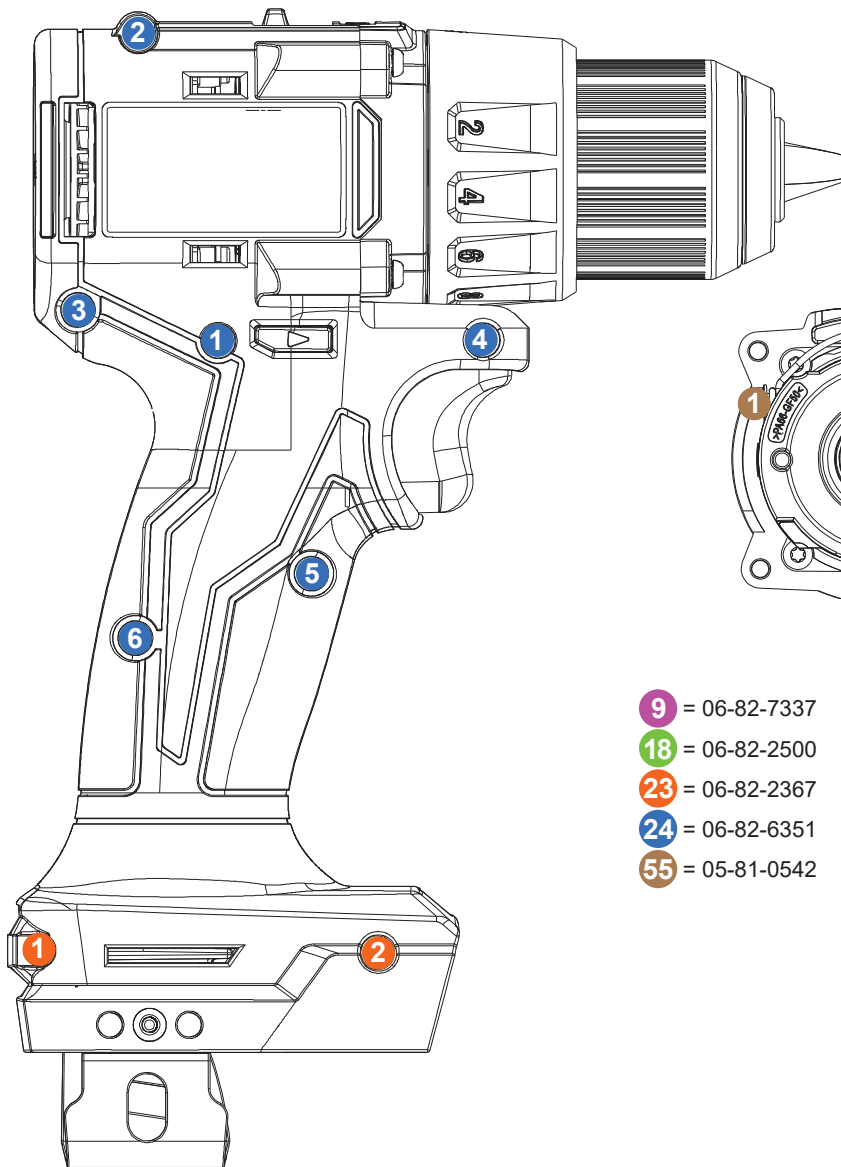
the tool into a vise with soft jaws (this will require that you remove the belt clip from the tool). It is recommended to use a 12"-18" metal tube or pipe as leverage over the allen key. In a counter-clockwise direction apply a slow, steady force on the 'cheater bar' to break the chuck loose.

INSTALLING NEW CHUCK AND SCREW:

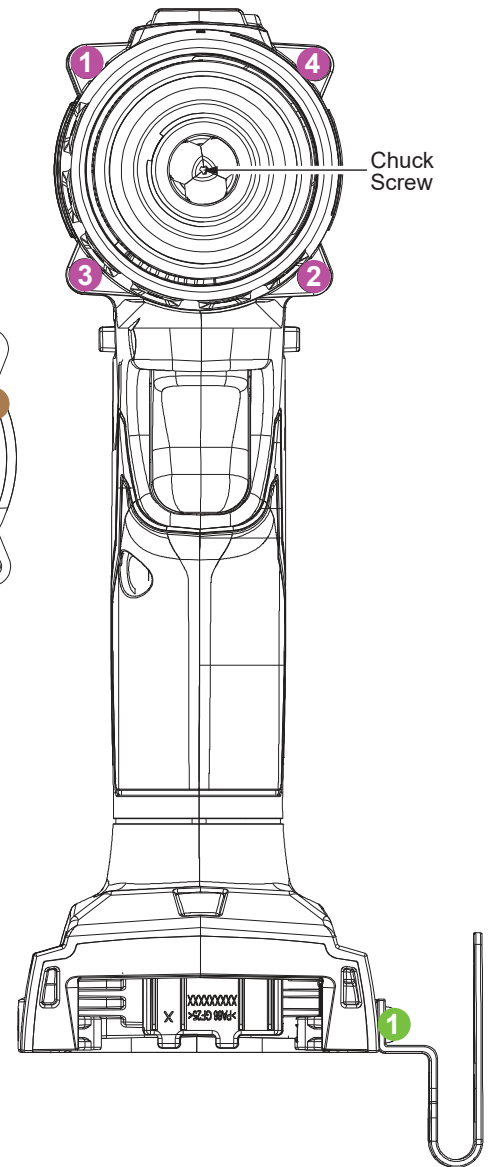
Torque Chuck to 350-375 kgf-cm (304-325 lb-in)
Torque Screw to 104-115 kgf-cm (90-100 lb-in)

FIG.	PART NO.	DESCRIPTION OF PART	NO. REQ.
54	44-10-0195	Speed Change Lever	(1)
55	05-81-0542	M2.3 x .794 PWH Philips Screw	(2)
62	12-20-7213	Service Nameplate	(1)
63	16-07-5390	Rotor Service Assembly	(1)
64	14-46-9755	1/2" Chuck Service Kit	(1)
65	14-30-6260	Gearbox Service Assembly	(1)
66	-----	Gearbox	(1)
67	14-20-9230	Electronic Service Assembly	(1)
68	42-70-0950	Belt Clip Service Kit	(1)
69	14-34-6380	Housing Service Assembly	(1)
70	42-55-2692	Contractor Bag	(1)

FASTENER TIGHTENING PROCEDURE



- 9 = 06-82-7337
- 18 = 06-82-2500
- 23 = 06-82-2367
- 24 = 06-82-6351
- 55 = 05-81-0542



SCREW TORQUE SPECIFICATIONS

FIG.	PART NO.	DESCRIPTION OF FASTENER	WHERE USED	SEAT TORQUE	
				(kgf-cm)	(lb-in)
9	06-82-7337	M4 x 20mm Pan Hd. ST T-10 w/Washer	Gearbox Service Assembly (Steps 1 thru 4)	9-11	8-10
18	06-82-2500	#6-32 x 7mm Pan Hd. Machine Screw	Belt Clip / Right Housing Halve	14-18	12-16
23	06-82-2367	M3 x 38mm Pan Hd. ST T-10 Screw	Right Housing Halve - Lower Cover (Steps 1 and 2)	10-12	9-10
24	06-82-6351	M3 x 16mm Pan Hd. ST T-10 Screw	Right Housing Halve - Upper Cover (Steps 1 thru 6)	9-11	8-10
55	05-81-0542	M2.3 x .794 PWH Philips Screw	Gearbox Service Assembly (Steps 1 and 2)	2-4	2-3
1	05-88-0202	M6.0 x 1 LH PH Chuck Screw	Chuck / Gearbox Spindle	104-115	90-100
2	-----	1/2" Keyless Chuck	Gearbox Spindle	350-375	304-325